



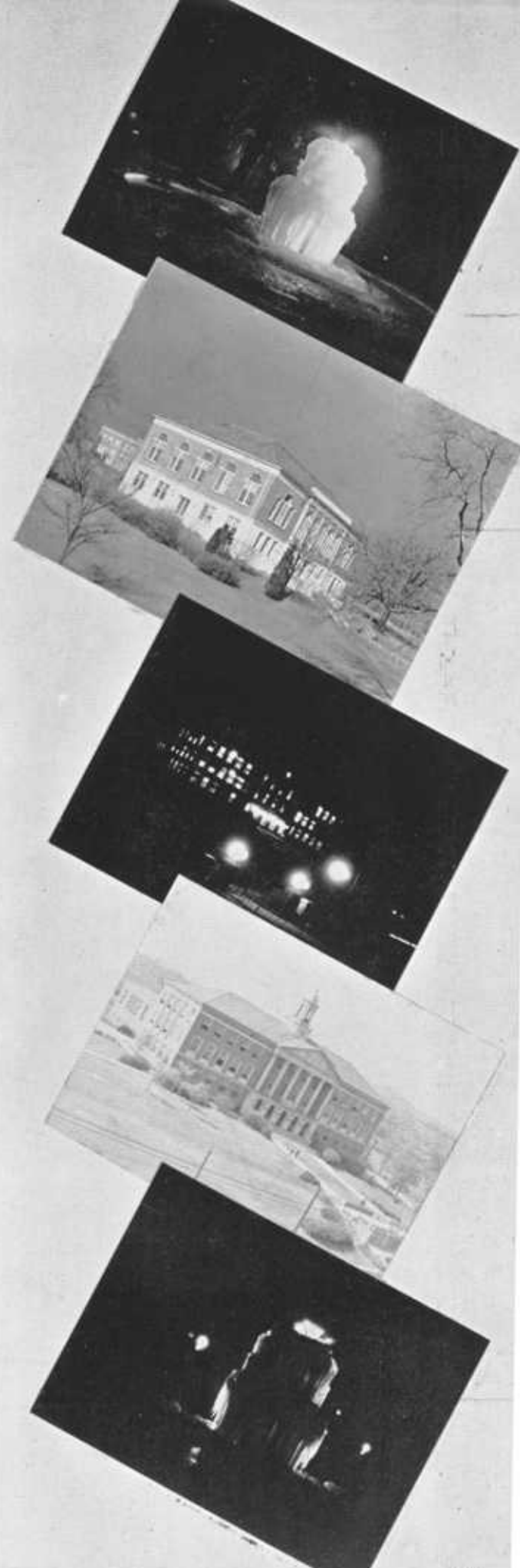
AYE

The Ayeni

'41

Contents

	Page
Dedication	2
Ayeni Staff	4
Our Campus	6
Administrative Officers and Faculty	8
Administrative Snap-shots	17
Class of 1941-Executive Council	18
Seniors	19
Juniors	33
Sophomores	34
Freshmen	35
Campus Organizations	36
National Organizations	45
Campus Clubs	65
Activities and Departments	84
Personalities	93
Snap-shots	101



Dedication

In recognition of the thirty years of service as President of the institution, during which time it has risen from obscurity to a position of pre-eminence in American higher education, the "Ayeni" staff reverently, and gratefully dedicates the 1941 volume of "Ayeni" to President W. J. Hale.



WILLIAM JASPER HALE

President, Agricultural and Industrial State College since 1911
M.A., Lincoln University; LL.D., Wilberforce University; LL.D., Howard University

The President

Born, Jasper, Tennessee; Educated in Maryville College, Maryville, Tennessee; Principal, St. Elmo High School; Principal, East Fifth Street School, Chattanooga, Tennessee; Founder and President, Tennessee Inter-Racial League; Past President, National Conference of President of Land Grant Colleges; Former Vice-President, National Negro Business League; Honorary President, Tennessee Negro Education Association; Member of President Hoover's Housing Committee; Vice-President of Citizens Savings Bank and Trust Company; Lecturer, at National Education Association and Teachers College, Columbia University; Harmon Gold medallist, 1930; Member of N. E. A. Committee on Negro Education; Member of International Advisory Committee on Education; Member of National Advisory Committee of Delta Phi Delta; Jewel of Alpha Kappa Mu Honorary Fraternity; Charter member of Chi Boule of Sigma Chi Phi Fraternity.

Ayeni Staff



STAFF EXECUTIVES AT WORK

PREPARING COPY

SELECTING SNAP-SHOTS

IN THE BUSINESS OFFICE

PHOTOGRAPHIC STAFF

THE COPY DESK

Ayeni Staff



EDITORIAL STAFF

BILLY JONES
Editor-in-Chief

HUSHTON B. MILLER
Assistant Editor-in-Chief

CHARLES R. HUNTER
Art Editor

EDWARD HALE
Photographic Editor

MYRTLE BOND
Club Editor

WALTER C. PINKSTON
Fraternity Editor

ETHEL BANKS
Sorority Editor

HARRIETT DAVIS
Copy Editor

LEON J. CARTER
Assistant Art Editor

MOSE J. DAVIE
Assistant Fraternity Editor

ROBERT P. GIBSON, JR.
Asst. Photographic Editor

DEAN GEORGE W. GORE, JR.
MRS. ALMA DUNN-JONES
MISS LOIS DANIEL
Advisers

BUSINESS STAFF

JOHN WILSON
Business Manager

JOSEPH C. MARSHALL
Assistant Business Manager

IRA EVANS, JR.
Circulation Manager

RUTH O. THOMAS
Asst. Circulation Manager

MELVIN MARTIN
Chr. of Snap-shot Committee

MAE T. BARBEE
HELEN S. ANDERSEN
LILLIE M. BLAND
GRACE L. SPEARMAN
MARIE BAXTER
HALBERT E. DOCKINS
General Secretaries

WALTER HOUSE
HERBERT HOLMES
LUCILLE MURPHY
BESSIE I. FINLEY
SAMUEL CURLEY
MAZARENE TERRELL
TRANNNY P. ARNOLD
General Assistants



VIEW FROM LAKES



FIELD HOUSE



EAST DORMITORY



FOUNTAIN AT NIGHT



LIBRARY AT NIGHT



LIBRARY
SENIOR WALKS

WILSON HALL



LIBRARY



ADMINISTRATION BLDG. AT NIGHT



CHRISTMAS AT PRESIDENT'S HOME



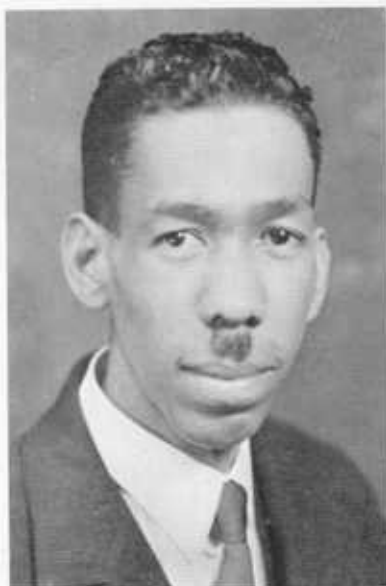
HALL HALL

THE LAKES





*Administrative
Officers
and
Faculty*



GEORGE WILLIAM GORE, JR.
Dean of Instruction
A.B., De Pauw University
Ed.M., Harvard University
Ph.D., Columbia University



HARRIET E. HALE
Business Education
A.B., Fisk University
B.S., Tennessee State College
M.A. and further study, Columbia
University



ALGER V. BOSWELL
Treasurer
A.B., Wiley College
M.A., Northwestern University
Graduate Work, Columbia University



MARTHA M. BROWN
Librarian
Fisk University
Hampton Library School



R. BARTLEY J. CAMPBELLE
Bursar
Howard University
LL.B., Kent College of Law
C.P.A., Tennessee State Board Accountancy



ZELMA L. REDMOND
English
A.B., Howard University
M.A., Columbia University



CORINNE H. SPRINGER
Home Economics
B.S., Tennessee State College
M.A., University of Cincinnati



ALMA DUNN-JONES
English
B.S., Tennessee State College
M.A., Columbia University



FRANCES E. THOMPSON
Art
B.S.A., Massachusetts School of Art
Snow Freehlich School of Art; Prague,
Czechoslovakia
Harvard University



LOIS H. DANIEL
Library Science
B.S., Tennessee State College
B.S., in Library Science
Hampton Library School



JESSE D. HAYES
Chemistry
B.Ed., Southern Illinois State
M.S., University of Iowa



GOLDIE G. BRUCE
School Nurse
 Chicago School of Nursing



MERLE R. EPPSE
Social Science and History
 A.B., Drake University
 M.A. and further study, Columbia University



LAURA M. AVERITTE
English
 B.S., Tennessee State College
 University of Chicago
 M.A., Columbia University



ANNIE L. COTTEN
Office
 B.S., Tennessee State College



RUTH DUVALL
Secretary to Building Developer
 B.S., Tennessee State College



FRANCES A. SANDERS
Elementary Education
 B.S. Union Central College
 M.A., Columbia University



JOSEF C. JAMES
History and Government
A.B., Talladega College
M.A., Boston University
Graduate Work, Harvard University



R. E. CLAY
State Building Developer
Bristol Normal Institute
Knoxville College



LENA B. WATSON
Matron East Dormitory



ARNOLD DANIELS
Industrial Education
B.S., Tennessee State College



MYRIAM RICHARDSON
Office
B.S., Tennessee State College



MATTIE L. UPSHAW
Laboratory Assistant
B.S., Tennessee State College



DOROTHY E. GARLAND
Physical Education
B.S., Sargent School of Physical Education



WILLETTE KILPATRICK
Physical Education
Graduate of Savage School of Physical
Education.



CAROLYN E. JOHNSON
Art
B.S., Howard University



MABEL E. EVANS
Home Economics
B.S., and Graduate Study, Indiana State
College



THOMAS E. POAG
Speech
A.B., Morgan College
M.A., Ohio State University
Graduate Study, Ohio State and New York
University



FLOYD C. MOURNING
Health
A.B., Lincoln University (Pennsylvania)
M.A., New York University



THEODORE GOULD
Science

B.S., University of Pennsylvania
M.A., and Further Graduate Work, Boston University



CATHERINE BRADFORD
Home Economics

B.S., Tennessee State College
Graduate Study, Ohio State University



LESTER LENNON
Physical Education

B.S., Shaw University
M.A., Columbia University



EDWARD T. JOHNSON
English

A.B., Talladega College
M.A., University of Chicago



MABEL E. SAUNDERS
Music

Walden University
Chicago Music College
Cleveland Institute of Music
Private Study, Paris, France



RUTH G. SMITH

Romance Languages
A.B., Syracuse University
M.A., Columbia University
Foreign Study, La Sorbonne, Paris, France



ELEITHYA M. MARSHALL
Assistant in Office of Registrar
B. S., Tennessee State College



EUNICE S. MATTHEW
Elementary Education
A. B., Hunter College
Graduate Study, Hunter College
New York University
Columbia University



FREDERICK J. D. MCKINNEY
Social Science
B.S., M.A., Ball State Teachers College



MADELON BATTLE
Psychology
B.A., New York University
M.A., Columbia University



PEARL W. GORE
Students' Accounts
B.S., Tennessee State College



ROBERT L. WILLIAMS
Social Science
A.B., M.A., Howard University
Graduate Work, University of Minnesota



A. VEDESTER HILL
Agronomy
 B.S., Southern University
 Graduate Study, Cornell University



E. JEANETTE VERNON
Secretary
 B.S., Tennessee State College



WADE WILSON
Industrial Education
 B.S., Cheney State Teachers College
 Ed.M., Pennsylvania State College
 Graduate Work: University of Minnesota



MILDRED E. CLIFT
Acting Registrar
 B.S., Tennessee State College



FORREST W. STRANGE
Industrial Education
 B.S., Tennessee State College



MARY E. FORBES
Registrar's Office
 B.S., Tennessee State College
 M.A., Fisk University



THOMAS G. LASTER
Biology and Psychology
A.B., Talladega College
M.A., University of Minnesota
Graduate Study, University of Minnesota



HILDA MCGILL-TAYLOR
Secretary to the Dean
B.S., Tennessee State College



LOUIS C. TOLLIVER
Office and Grounds
B.S., Tennessee State College



EM BURT-THOMPSON
Science
A.B., Fisk University
A.M., University of Michigan



BENTON A. ADAMS
Art
B.S., Tennessee State College



MARY LELA PARHAM
Secretarial Commerce
B.S., Tennessee State College

Administrative Snap-shots



Class of 1941-Executive Council



The Senior Class Executive Council is composed of officers of the class and eight other members. The Council acts as a sort of Advisory Board for the whole class.

Reading from left to right, seated: Helen E. Mathis, James N. Lemons, treasurer; Mae T. Barbee, secretary; Dr. George W. Gore, Jr., adviser; Edward H. Hale, president; Rushton B. Miller, vice-president; Mrs. Em. T. Burt-Thompson, co-adviser; Geneva A. Morrow, assistant secretary; Billy Jones, business manager; Argatha Baugh.

Standing, left to right: Leon J. Carter, Walter C. Pinkston, Charles R. Hunter, Daly R. Reed, Frederick Sumrall, Raymond Chiles, parliamentarian; Alonzo Martin and Theodore J. Lawson, also a member of the Council who is not in the picture.

Seniors

HELENE SHIRLEY ANDERSON
Buffalo, New York
Business Education

Delta Sigma Theta, Pres.; Alba Rosa Club; Delta Phi Delta; Ass't Sec'y. Ayeni Staff; History Study Club; Alpha Iota; Treas., T. S. Players Guild; Sunday School.



MINNIE GREER ARMOUR
Collierville, Tennessee
Home Economics

Home Economics Club; History Study Club; Literati Honor Society.

HENRY ANDERSON ATWATER
Chapel Hill, North Carolina
Agriculture

N.F.A.; Kappa Alpha Psi Fraternity; Y.M.C.A.; History Study Club.



ETHEL LEE BANKS
Forrest City, Arkansas
Home Economics

Alpha Kappa Alpha Sorority, Basileus; Alba Rosa Club; Literati Honor Society; Alpha Kappa Mu Honor Society; History Study Club; Y.W.C.A.; Home Economics Club; Sorority Editor Ayeni Staff; Assistant Secretary College Sunday School.

MAE T. BARBEE
Springfield, Ohio
Business Education

Secretary of Senior Class; Secretary of Ayeni; Secretary of Delta Phi Delta; Anti-grammateus, Phi Beta Tau Chapter, Alpha Kappa Mu, Honor Society; Jewel and Reporter of Literati Honor Society; Secretary Sunday School; Alba Rosa Club; Ohio Club; member of Executive Council of Tennessee State Players Guild; Choir; President of Alpha Iota Business Education Fraternity.



WILEY W. BARKER
Clifton, Louisiana
Agriculture

Botany Specialist; Y.M.C.A.; History Study Club.

ARGATHA BAUGH
Nashville, Tennessee
Home Economics

Delta Sigma Theta Sorority; Alba Rosa Club; History Study Club; Home Economics Club.



MARIE ELAINE BAXTER
Cincinnati, Ohio
Physical Education

Alpha Kappa Alpha Sorority; Alba Rosa; Y.W.C.A.; Physical Education Club; Romantic Linguistic Club; Ayeni Staff.

DOROTHY MARIE BEATTY
Chicago, Illinois
Home Economics

Delta Sigma Theta Sorority; History Study Club; Alba Rosa Club; College Glee Club; Personality Group, I.B.T.; Home Economics Club.



TEMPIE NATALIE BEAVERS
Athens, Alabama
English

Literati Honor Society; College Choir; Tennessee State Players Guild.

Seniors

LILLIE MAE BLAND

Bowling Green, Kentucky
Business Education

Alpha Kappa Alpha Sorority; Alpha Kappa Mu Honor Society; Kentucky Club; Alpha Iota; Ayeni Staff; Dinner Dansant Staff.



MYRTLE P. BOND

Brownsville, Tennessee
Home Economics

Zeta Phi Beta Sorority; Alba Rosa Club; History Study Club; Home Economics Club; Club Editor Ayeni Staff.

RUTH DELORIS BOND

Nashville, Tennessee
Home Economics

Home Economics Club



ANNIE BEATRICE BOSTIC

Nashville, Tennessee
Elementary Education

Zeta Phi Beta Sorority; History Study Club; Elementary Education Club.

EMMA BRADFORD

Nashville, Tennessee
Physical Education

Zeta Phi Beta Sorority; Physical Education Club; History Study Club; Literati Honor Society.



ANNA D. BRANSFORD

Gallatin, Tennessee
Home Economics

Home Economics Club; Literati Honor Society; Member of College Choir.

EARLYN MASON BROWN

Daytona Beach, Florida
English

History Study Club; Concert Group.



LEONELL BUSBY

Nashville, Tennessee
Elementary Education

History Study Club; Elementary Education Club.

RAYMOND T. CHILES

Nashville, Tennessee
History and Social Science

Forensic Society, President; Debate Team, Captain; International Relations Club, Reporter; History Study Club; Executive Member Senior Class.



JIMMIE ELIZABETH CARTMELL

Nashville, Tennessee
English

Library Science Club; Home Economics Club; Romantic Linguistic Club; Literati Honor Society; Nashville Suitcase Theatre.

Seniors

LEON J. CARTER

Toledo, Ohio
Industrial Education

Treasurer, Alpha Phi Alpha; Tennessee State Players Guild; H.S.C.; Brain Trust; Craftsman Guild; Cheer Leader; S.C.A.; Ohio Club; I.B.T.; Member Track and Swimming Squad; Better Dormitory Club.



PEARL HERMIES COLEMAN

Nashville, Tennessee
Home Economics

Alba Rosa Club; Home Economics Club.

SAMUEL V. COLEMAN

Knoxville, Tennessee
Agriculture

Kappa Alpha Psi Fraternity; New Farmers of America; Players Guild; History Study Club; Y.M.C.A.; Romantic Linguistic Club.



CHARLES A. CONLEY

Nashville, Tennessee
Physical Science

Alpha Phi Alpha Fraternity; Romantic Linguistic Club.

HOWARD COTTON

Germantown, Tennessee
Agriculture

New Farmers of America; History Study Club.



LAVERNE "NUBBY" CRAWFORD

East St. Louis, Illinois
Industrial Education

Omega Psi Phi; Industrial Education Club; Varsity "T" Club; Football 36-37-38-39.

MILTON DAVIE

Clarksville, Tennessee
Agriculture



HARRIETT CORDELIA DAVIS

Shelbyville, Tennessee
Business Education

Ivy Leaf Club; Alpha Iota Business Education Club; History Study Club; Alba Rosa Club; Copy Editor of Ayeni Staff.

EMMANUEL EUGENE DICKERSON

Memphis, Tennessee
Agriculture

Omega Psi Phi Fraternity; History Study Club; New Farmers of America.



MAYRE THELMA DONNELL

Nashville, Tennessee
English

Literati Honor Society; History Study Club; Member of Tennessee State Players Guild.

Seniors

MARIE LENORA DOUGLAS

Franklin, Tennessee

English

Alpha Kappa Alpha Sorority; Romantic Linguistic Club.



INA VERNON DUNSCOMB

Evansville, Indiana

Business Education

Alpha Iota; Delta Tau Iota.

SARAH J. EDMONDSON

Nashville, Tennessee

Elementary Education

Y.W.C.A.; Home Economics Club; Elementary Education Club; Dramatic Club.



CAROLYN OLETHA EDWARDS

Nashville, Tennessee

Home Economics

Home Economics Club.

ATHA P. ELLIS

Memphis, Tennessee

Industrial Education

Industrial Education Club.



JOE BRYANT EPPS

Covington, Tennessee

Agriculture

Kappa Alpha Psi Fraternity; History Study Club; New Farmers of America.

BERNICE ALMETTA ESKRIDGE

Memphis, Tennessee

Pre-Medic

History Study Club; Zeta Phi Beta Sorority.



IRA E. EVANS, JR.

Gadsden, Alabama

Business Education

President, T.S. Players Guild; Band Member; Secretary, Alpha Phi Alpha; Treasurer, Sunday School; Brain Trust; S.C.A.; H.S.C.; Y.M.C.A.; Circulation Manager of Ayeni.

CHARLES SOUTHALL FARMER

Franklin, Tennessee

History and Social Science

Omega Psi Phi Fraternity; President, International Relations Club; Sports Editor, Ayeni.



BESSIE IRENE FINLEY

Batesville, Arkansas

Secretary, Pyramid Club; Delta Sigma Theta Sorority; Home Economics Club; History Study Club.

Seniors

HATTIE LUCILE FITZPATRICK

Nashville, Tennessee

Home Economics

History Study Club; Pyramid Club of Delta Sigma Theta Sorority; Literati Honor Society; Home Economics Club.



THEODORE FOSTER

Chattanooga, Tennessee

Physical Science

RUTH OLIVETTE GARY

Muskogee, Oklahoma

Home Economics

Home Economics Club.



UVALLAR E. GERRON

Dickson, Tennessee

Elementary Education

Elementary Education Club.

CALVIN COURTNEY GIBSON

New York, New York

Pre-Medic

President, Better Dormitory Club; Omega Psi Phi Fraternity, Keeper of Finance; Go-to-Sunday-School Committee.



HENRY LEE GORDON

Little Rock, Arkansas

Agriculture

New Farmers of America; History Study Club.

JOSEPH NELSON GREEN

Little Rock, Arkansas

History and Social Science

Alpha Phi Alpha Fraternity; History Study Club; International Relations Club.



GERALD QUENTIN GREENFIELD

Columbia, Tennessee

History and Social Science

Omega Psi Phi Fraternity; International Relations Club; History Study Club.

GERTRUDE MARABLE GRISHAM

Murfreesboro, Tennessee

Health and Physical Education

Physical Education Club; Office, Activity Committee.



EDWARD H. HALE

Nashville, Tennessee

Physical Science

President, Senior Class; Delta Phi Delta; Alpha Kappa Mu Honor Fraternity; Literati Honor Society; Tennessee State Players Guild; History Study Club; Brain Trust.

Seniors

EDWARD R. HAMBRICK

Kansas City, Missouri

Pre-Medic

Alpha Phi Alpha Fraternity; Romantic Linguistic; History Study Club.



ETHELYNE ORETHA HAMLAR

Roanoke, Virginia

Business Education

Literati Honor Society; Archonian Club; Ayeni Staff.

CYNTHIA MAE HAYDEN

Lebanon, Tennessee

Elementary Education

Elementary Education Club; Literati Honor Society Secretary; History Study Club; College Choir.



VIVIAN BELLE HERNDON

Middletown, Ohio

History and Social Science

History Study Club; Sigma Phi Psi.

EDNA MINOR HICKS

Memphis, Tennessee

English

Romantic Linguistic; History Study Club; Library Science Club.



EMMA JAMES HINES

Newman, Georgia

Home Economics

Alpha Kappa Alpha Sorority; Home Economics Club.

EVELYNE MILDRED HODGES

Meridian, Mississippi

Music and Fine Arts

Tennessee State Players Guild; Cheer Leader; Delta Tau Iota Club; Choir; Concert Singers; Literati Honor Society.



HERMAN L. HORNE

Ashville, North Carolina

History and Social Science

International Relations Club; History Study Club.

MARION ELIZABETH HOWELL

Mt. Pleasant, Tennessee

Elementary Education

Delta Sigma Theta Sorority; Alba Rosa Club; Elementary Education Club.



GLADYS NAXIENE HURT

Waycross, Georgia

Science

Delta Sigma Theta Sorority; History Study Club.

Seniors

JAMES ARTHUR JACKSON

Greensboro, Alabama

Physical Science

Alpha Phi Alpha Fraternity; Alpha Kappa Mu National Honor Society; History Study Club; Debating Team; Inter-collegiate and Inter-mural Athletics.



MAJOR A. JARRETT

Whiteville, Tennessee

Agriculture

Kappa Alpha Psi Fraternity; History Study Club; New Farmers of America.

HAROLD WILLIAM JENKINS

Nashville, Tennessee

Agriculture

Alpha Phi Alpha Fraternity; New Farmers of America; History Study Club.



BILLY JONES

East St. Louis, Illinois

History and Social Science

Editor, Ayeni; Business Manager, Senior Class; President, Alpha Phi Alpha; President, Delta Phi Delta, Beta Chapter; Vice-president, Delta Phi Delta; T. S. Players Guild; Band; Alpha Kappa Mu; Brain Trust.

ROBERT MATTHEW JORDAN

Gary, Indiana

History and Social Science

Kappa Alpha Psi Fraternity; History Study Club.



FAMBRO LEE KENDRICK

Thomasville, Georgia

Industrial Education

Alpha Phi Alpha Fraternity; Industrial Education Club.

HANNAH M. LAWRENCE

Franklin, Tennessee

English

Romantic Linguistic Club; Literati Honor Society; History Study Club.



HAROLD VERNE LEAGUE

Brentwood, Tennessee

Pre-Medic

Romantic Linguistic Club

JAMES N. LEMONS

Covington, Tennessee

Agriculture

Omega Psi Phi; Treasurer, Senior Class; President, New Farmers of America, Collegiate Chapter; History Study Club; Y.M.C.A.



WESLEY ANDERSON LOGAN

East St. Louis, Illinois

Industrial Education

Kappa Alpha Psi Fraternity; Varsity Basketball; Industrial Education Club; Concert Singers.

Seniors

BENJAMIN F. MALLARD

Detroit, Michigan

Health and Physical Education

Kappa Alpha Psi Fraternity; Fourth Estate; History Study Club; Physical Culture Club.



JOSEPH C. MARSHALL

St. Joseph, Missouri

English

Polemarch, Alpha Theta Chapter, Kappa Alpha Psi; Business Manager, H.S.C.; Assistant Bus. Mgr., Ayeni; Vice-President, I.B.T.; Literati; Romantic Linguistic; Brain Trust; Y.M. C.A.; Fourth Estate; S.C.A.; Tennessee State Players Guild; Cir. Mgr., Ayeni Collegian.

ALONZO ROSS MARTIN

Nashville, Tennessee

History and Social Science

Omega Psi Phi Fraternity; Senior Executive Council; History Study Club; International Relations Club; T.S. Players Guild.



MELVIN EUGENE MARTIN

Huntsville, Alabama

History and Social Science

International Relations Club; History Study Club; Scrollers Club.

HELEN EZMA MATHIS

Greenville, Kentucky

Business Education

Alpha Kappa Alpha Sorority; Alpha Iota; Business Education Fraternity; Delta Tau Iota Club; Kentucky Club.



NEAL McALPIN

Dayton, Tennessee

Agriculture

Kappa Alpha Psi Fraternity; History Study Club; President of Life Saving Club.

MARY ELIZABETH McGUIRE

Memphis, Tennessee

Elementary Education

Elementary Education Club.



BONNIE BELLE McLEAN

Memphis, Tennessee

Home Economics

Home Economics Club; History Study Club.

MARGARET GWENDOLYN MEDLIN

Nashville, Tennessee

English

Literati Honor Society; Tennessee State Players Guild.



MARY FRANCES MILLER

Nashville, Tennessee

Elementary Education

Vice-President, Elementary Education Club; Zeta Phi Beta Sorority.

Seniors

RUSHTON B. MILLER

Birmingham, Alabama

History and Social Science

Vice-President, Senior Class; Omega Psi Phi; President, H.S.C.; Student Supt. of Sunday School; Director and Manager of Tennessee State Collegians; College Band; President, Alabama Club; Alpha Kappa Mu.



LATHAM MILLS

Franklin, Tennessee

Physical Science

Omega Psi Phi; Romantic Linguistic Club.

GENEVA ANN MORROW

Des Moines, Iowa

Home Economics

Alpha Kappa Alpha; Delta Tau Iota; Senior Secretary of Ayeni; Home Economics Club; T.S. Players Guild; Assistant Secretary of Senior Class; Miss Tennessee, 1939-40; Cheer Leader; Costume Designer for Tennessee State Players Guild; Most Popular Girl, 1940.



LUCILE DELORES MOSS

Nashville, Tennessee

Elementary Education

Literati Honor Society; Elementary Education Club.

MARY ELIZABETH MOSS

Springfield, Tennessee

English



LUCYLE G. MURPHY

Nashville, Tennessee

Home Economics

President, Home Economics Club; Tennessee State Players Guild; History Study Club.

NED M. NEELY

Forest, Mississippi

Agriculture

Omega Psi Phi Fraternity; New Farmers of America; History Study Club.



GEORGE W. OFFICER

Lebanon, Tennessee

Pre-Medic

History Study Club; Romantic Linguistic.

PEARLIE ETTER OFFICER

Sparta, Tennessee

Elementary Education

Elementary Education Club



DAVIS D. OWENS

Carthage, Tennessee

Agriculture

N.F.A.; H.S.C.; College Choir; Forensic Society; President of Phi Beta Sigma, Zeta Alpha Chapter; Sunday School Officer.

Seniors

HILTON N. OWENS

East St. Louis, Illinois

Physical Science

Concert Group Choir; Band; Omega Psi Phi; Illinois Big Ten Club.



NOBLE H. OWENS, JR.

Memphis, Tennessee

English

Y.M.C.A.; Dramatic Guild; Omega Psi Phi; Anderson Billy Hale, Jr. Club.

BIRDIE PARKS

Birmingham, Alabama

English

Alba Rosa Club; History Study Club.



EWANIA "PAT" PATILLO

Nashville, Tennessee

Home Economics

Alba Rosa; Tennessee State Players Guild; Home Economics.

SAMMIE JOSEPHINE PATTON

Nashville, Tennessee

Mathematics

Pyramid Club of Delta Sigma Theta; History Study Club.



LARRY PENDERGRASS

Dickson, Tennessee

Elementary Education

GEORGIA ANN PILLOW

Nashville, Tennessee

Home Economics

Alpha Kappa Alpha; Alba Rosa Club; Home Economics Club.



WALTER COURTNEY PINKSTON

Hartford, Connecticut

English

Omega Psi Phi Fraternity, Basileus; Concert Singers; Choir; Orchestra; Y.M.C.A.; Better Dormitory Club.

KATHRYN ELLEN PRATHER

Nashville, Tennessee

English

College Glee Club



MATTIE BELLE PRIDE

Nashville, Tennessee

Mathematics

Seniors

DALY ROSTEN REED

Pulaski, Tennessee

Vocational Agriculture

New Farmers of America; Industrial Arts Club; Literati Honor Society; Senior Class Executive Council.



ELLA L. REYNOLDS
Chattanooga, Tennessee

English

BEATRICE SADLER RODDY

Harriman, Tennessee

English

Literati Honor Society; Romantic Linguistic Club.



ARTHUR F. RODGERS

Monroe, Louisiana

Agriculture

N.F.A.; Tennessee State Players Guild; Y.M.C.A.; Romantic Linguistic Club; Better Dormitory Club; Alpha Phi Alpha Fraternity.

CLAUDYNE VIVIAN ROGERS

Macon, Georgia

History and Social Science

History Study Club; Treasurer, Ivy Leaf Club; Delta Tau Iota Club.



KATHERINE V. ROGERS

Bristol, Tennessee

Home Economics

Home Economics Club.

ALVIN LESTER ROUNTREE

East St. Louis, Illinois

History and Social Science

Vice-President, Alpha Phi Alpha Fraternity; Treasurer, History Study Club; Hawks Club; Anderson Billy Hale Club; Romantic Linguistic Club.



ELIZABETH K. SHAW

Chattanooga, Tennessee

Home Economics

History Study Club.

GLADYS SHOCKLEY

Kansas City, Missouri

Physical Education

Alba Rosa Club; Physical Education Club; History Study Club; Dramatic Guild; Cheer Leader.



SHIRLEY W. SHOCKLEY

McMinnville, Tennessee

Agriculture

N.F.A.; History Study Club; Phi Beta Sigma Fraternity.

Seniors

HOWARD VIRGAL SIMS

Humboldt, Tennessee

Mathematics

History Study Club.



MILDRED MAE SENSING

Nashville, Tennessee

Business Education

Alpha Iota Club; Alpha Kappa Alpha Sorority.

ABIGAIL STAPLES

Nashville, Tennessee

History and Social Science



IDA MARIE STOCKARD

Nashville, Tennessee

Home Economics

College Choir; Home Economics Club; Zeta Phi Beta Sorority.

AUDRIA M. SUGGS

Indianapolis, Indiana

Elementary Education

Elementary Education Club.



FREDERICK A. SUMRALL, JR.

Laurel, Mississippi

Industrial Education

Omega Psi Phi; Varsity "T" Club; Hawks Club; History Study Club; Tennessee State Players Guild; Member of Senior Class Executive Committee.

EDWARD H. TAYLOR

Brunswick, Tennessee

Agriculture

History Study Club; New Farmers of America.



INEZ ZENOBIA TAYLOR

Arlington, Tennessee

Home Economics

Home Economics Club.

MARTIN PACK TAYLOR

Brownsville, Tennessee

Agriculture

Phi Beta Sigma Fraternity; N.F.A.; History Study Club.



RUTH OLIVE THOMAS

Chicago, Illinois

History and Social Science

Secretary, H.S.C.; Secretary, Forensic Society; Assistant Secretary, International Relations Club; Assistant Secretary, Tennessee State Players Guild; Y.W.C.A.; Delta Tau Iota; Assistant Circulation Manager of Aveni.

Seniors

WILLIAM CARL THOMAS

Roanoke, Virginia
Physical Education

Varsity Basketball; Physical Education Club.



ARENA MACK TILLAGE

Murfreesboro, Tennessee
Home Economics

Home Economics Club.



DOROTHY S. TURNER, R.N.

Lexington, Kentucky
Pre-Medic

Ivy Leaf Club; Literati Honor Society; Romantic Linguistic Club.



FANNIE VANLEER

Dickson, Tennessee
English

History Study Club; Romantic Linguistic Club.



JOHN MAURICE WEATHERFORD

Nashville, Tennessee
Industrial Arts

Omega Psi Phi Fraternity; Industrial Arts Club.



RUSSELL WEATHERS

Memphis, Tennessee
Agriculture

Member Tennessee State Collegians; Omega Psi Phi Fraternity; New Farmers of America.



JOHN C. WEAVER

Rockaway Beach, New York
Pre-Medic

Phi Beta Sigma Fraternity; Romantic Linguistic Club.



GLADYS VALERIA WELLS

Jackson, Mississippi
Business Education

Delta Sigma Theta Sorority; Fourth Estate of Delta Phi Delta, National Journalistic Fraternity.



IRENE BEVERLY WEST

Montgomery, Alabama
English

Concert Singers; History Study Club; Delta Tau Iota Club.



ROSCOE G. WHITE

Pensacola, Florida
Physical Education



Seniors

JOHN L. WILSON

Atlanta, Georgia

Health and Physical Education

Business Manager, Ayeni; History Study Club; Y.M.C.A.; Omega Phi Psi; Delta Phi Delta.



SAMMIE WORDE

Nashville, Tennessee

Industrial Education

Crescent Club; History Study Club; Industrial Education Club.

RUBY YATES

McEwen, Tennessee

Elementary Education

Elementary Education Club.



ANNIE L. YOUNG

Nashville, Tennessee

English

Alpha Kappa Alpha; Romantic Linguistic.

HORACE WESLEY YOUNG

South Pittsburg, Tennessee

Industrial Education

Omega Phi Psi; Vice-President, Industrial Education Club.



WALTER KENNETH YOUNG

Knoxville, Tennessee

Business Education

Kappa Alpha Psi; Alpha Iota.

WALTER LEE YOUNG

Cairo, Illinois

History and Social Studies

Kappa Alpha Psi; History Study Club; Basketball.



JAMES DOCK WHITE III

Nashville, Tennessee

Agriculture

History Study Club; New Farmers of America.

Junior Class



The Class of '42 has made definite strides toward its ultimate goal—Seniority!! During our three years here we have made definite scholastic, social and aesthetic contributions to campus activities.

The year's activities will be culminated by the annual courtesy to the Seniors—the Junior-Senior Prom.

Next year will find the Class of '42 on the last mile of its journey. Watch for the flying colors of the Class of '42.

OFFICERS

Myrtle L. Banks	President
Forrest City, Arkansas	
Daniel H. Taylor	Vice-President
Memphis, Tennessee	
Emma Richards	Secretary
Nashville, Tennessee	
Grace Howard	Assistant Secretary
Nashville, Tennessee	
Earl Bass	Treasurer
Watertown, Tennessee	
Lec Brandon	Business Manager
Pine Bluff, Arkansas	

ADVISERS: Miss Carolyn Johnson, Prof.
Merl R. Eppse.

Sophomore Class



The Class of '43 distinguished by its many versatile members has an enrollment of 277 students, representing more than twenty states.

The Class has made itself felt by having an appreciable number of its members on the Honor Roll for the fall quarter. They are as follows: Carrie B. Garrett, Gladys Burgess, Ethel M. Holland, Valcour Williams, Marie Grant, Irene E. Baker, Wilhelm R. Merriweather, and Daniel Taylor.

Several members made significant contributions to the "Thanksgiving Extravaganza," in the persons of Misses Minnie Compton, as "Miss Sophomore," Sara Payne, as "Miss Brain Trust," Ruth Lowe, as "Miss Pennsylvania," and Anne Galloway, as "Miss Theatre Guild."

Miss Galloway was also declared first prize winner in the State-wide Oratorical Contest which gave her an extended eastern trip with expenses paid. As an outstanding member of the Theatre Guild she has been featured in productions including "Craig's Wife," "Breeders," and "Dark Victory," in which she played the leading role.

Miss Irene Baker was also acclaimed the most popular young woman in the college with Miss Carrie B. Garrett in fourth place among popular young women.

The religious side of the college curriculum has been manifested by winning the attendance banner over a longer number of consecutive Sundays as compared with other classes.

With this most promising record over a period of two years, it is only fair to prophesy that the remaining ones will end in glorious triumph.

Class officers are as follows:

Alexander James	President
Jesse Dupee	Vice-President
Ethel M. Holland	Secretary
Dorothy Greer	Assistant Secretary
Anne Galloway	Treasurer

ADVISERS: Mrs. A. Dunn-Jones, Mrs. F. A. Sanders, Mr. Theodore Gould.

Freshman Class



ADVISERS—Miss Z. L. Redmond, Miss D. Garland, Mr. John C. Ballard, Mr. Josef C. James.

EDITORIAL STAFF—Misses Lena Bugg, Alice Calvert, Lois Collier, Mary A. Edmondson, Mary Kellum, Fannie R. Morton, Hazel Payne. Messers Charles Whitson, James White, Elwood Boyd, President.

ELECTORAL GROUP—Alice Alexander, Gallatin, Tenn.; Beatrice Baker, Lewisburg, Tenn.; Myrtle Baker, Gallatin, Tenn.; Marguerite Bass, Watertown, Tenn.; Charles Brooks, Nashville, Tenn.; Clemmie Brooks, Pulaski, Tenn.; Elwood Boyd, Nashville, Tenn.; James R. Brown, Nashville, Tenn.; Mary E. Brown, McMinnville, Tenn.; Lena D. Bugg, Nashville, Tenn.; Norman L. Burford, Cape Girardeau, Missouri; Alice V. Calvert, East St. Louis, Ill.; Alvin Campbell, Humbolt, Tenn.; Lois L. Collier, Clarksville, Tenn.; Guernia Dae, Burlington, N.C.; Anna B. Edington, Lynch, Ky.; Mary A. Edmondson, Nashville, Tenn.; Oscar J. Farmer, Humbolt, Tenn.; Edna Fields, Mason, Tenn.; Raymond Gaines, South Pittsburg, Tenn.; Annie T. Gleaves, Dickson, Tenn.; Eddie Gunn, Nashville, Tenn.; Virgie G. Hale, Nashville, Tenn.; Isham Ingram, Trenton, Tenn.; Hural Johnson, Trenton, Tenn.; James Keeling, Nashville, Tenn.; Mary Kellum, Nashville, Tenn.; Addie Knight, Readyville, Tenn.; Lorine Knight, Murfreesboro, Tenn.; William King, Nashville, Tenn.; Lee Richard, Dyersburg, Tenn.; Emma Lee, Spring Hill, Tenn.; Christine Lytle, Nashville, Tenn.; Clyde McCullough, Cairo, Ill.; Fannie R. Morton, Union City, Tenn.; Roy Meeks, Colp, Ill.; Elizra Nightingale, Nashville, Tenn.; Clinton Nelson, Indianapolis, Ind.; Paul Nunn, Alamo, Tenn.; Clarence O'Neal, Hopkinsville, Ky.; Marie A. Owens, Springfield, Tenn.; Fannie Palmer, Lebanon, Tenn.; Hazel Payne, Nashville, Tenn.; Pauline Parks, Bald, Ky.; Reuben Payne, Newark, Ohio; Thomas Pearson, Humboldt, Tenn.; John Sheppard, Cape Girardeau, Missouri; Burrell Simmons, Adams, Tenn.; Elvin Stewart, Nashville, Tenn.; Robert Stewart, Bryan, Texas; Lorene Smith, Newbern, Tenn.; Sidney Thomas, Milan, Tenn.; Margaret Tellis, Nashville, Tenn.; Josephine Williams, Pelham, Tenn.; Charles Watkins, Covington, Tenn.; Lucille Williams, Kerrville, Tenn.; Edward Williamson, Gallatin, Tenn.; J. D. Whittaker, Tullahoma, Tenn.; Robert G. Woodley, Little Rock, Ark.; Francis Young, Mt. Pleasant, Tenn.

Alpha Kappa Mu



Phi Beta Tau Chapter of Alpha Kappa Mu Honor Society is an outgrowth of the Sais Society which was organized at A. and I. State College in 1918. In 1930 it was known as Pi Kappa Nu; in 1931, Phi Beta Tau; and in 1939, it became Phi Beta Tau Chapter of Alpha Kappa Mu.

Admission to membership is open to Juniors and Seniors having a 2.3 average.

Chapters of this Society are located in twenty-one of the leading Negro colleges throughout the United States.

The first National Convention of the organization was held at A. and I. State College in 1937 with Phi Beta Tau as host chapter. The National Secretary-Treasurer and one of the members of the Executive Committee are members of this chapter. Present membership is as follows:

Miss Laura M. Averitte
Miss Mae T. Barboe, Anti-Grammateus
Miss Ethel Banks
Miss Myrtle Banks
Miss Lillie M. Bland
Mr. Alger V. Boswell
Mrs. M. M. Brown
Mr. R.B.J. Campbell, Sr.
Miss Mildred Clift
Miss Lois Daniel, Grammateus
Mrs. J. E. Elliott
Mrs. Ruth D. Eppse
Miss Mary Forbes
Dr. G. W. Gore, Jr., Basileus
Mrs. Pearl Winrow Gore

Mr. E. Harned Hale
Mrs. Hattie E. Hale
President W. J. Hale
Mr. W. J. Hale, Jr.
Mr. James Jackson
Mrs. Alma Dunn-Jones, Epistoleus
Mr. Billy Jones, Anti-Basileus
Mr. Rushton Miller
Miss Eleithya Marshall, Anti-Epistoleus
Mrs. Rachel Patillo, Tamiochous
Miss Helen Seeney
Mrs. Corinne Hall-Springer
Miss Mary F. Suggs
Mrs. Hilda McGill-Taylor
Mr. Louis Tolliver

Library Science Club



The Library Science Department offers courses for the training of teacher-librarians, and also a general course open to all students in the college. The work is accredited by the State Department of Education. The group of students in the lower picture is enrolled in either the beginning courses or the general course; those in the upper picture will complete a minor in the field during the school year. Mrs. M. M. Brown, Head Librarian, and Miss Modestine Young, Circulation Librarian, assist in the supervision of practice work.

Students completing a minor in the field during the year 1940-1941 are: Alma Terry Campbell, Irene Campbell, Jimmie Cartmell, Marye Thelma Donnell, Marie L. Douglas, Edna M. Hicks, B. Belle McLean, Alonzo Martin, Mary E. Moss, Sammie J. Patton, Claudyne Rogers, Irene B. West, Annie Young.

LOIS H. DANIEL, *Instructor*
B.S., Tennessee State College
B.S. in Library Science, Hampton Institute

Spirit of Literati Honor Society



APPRECIATION FOR LIFE—LITERATURE—BEAUTY

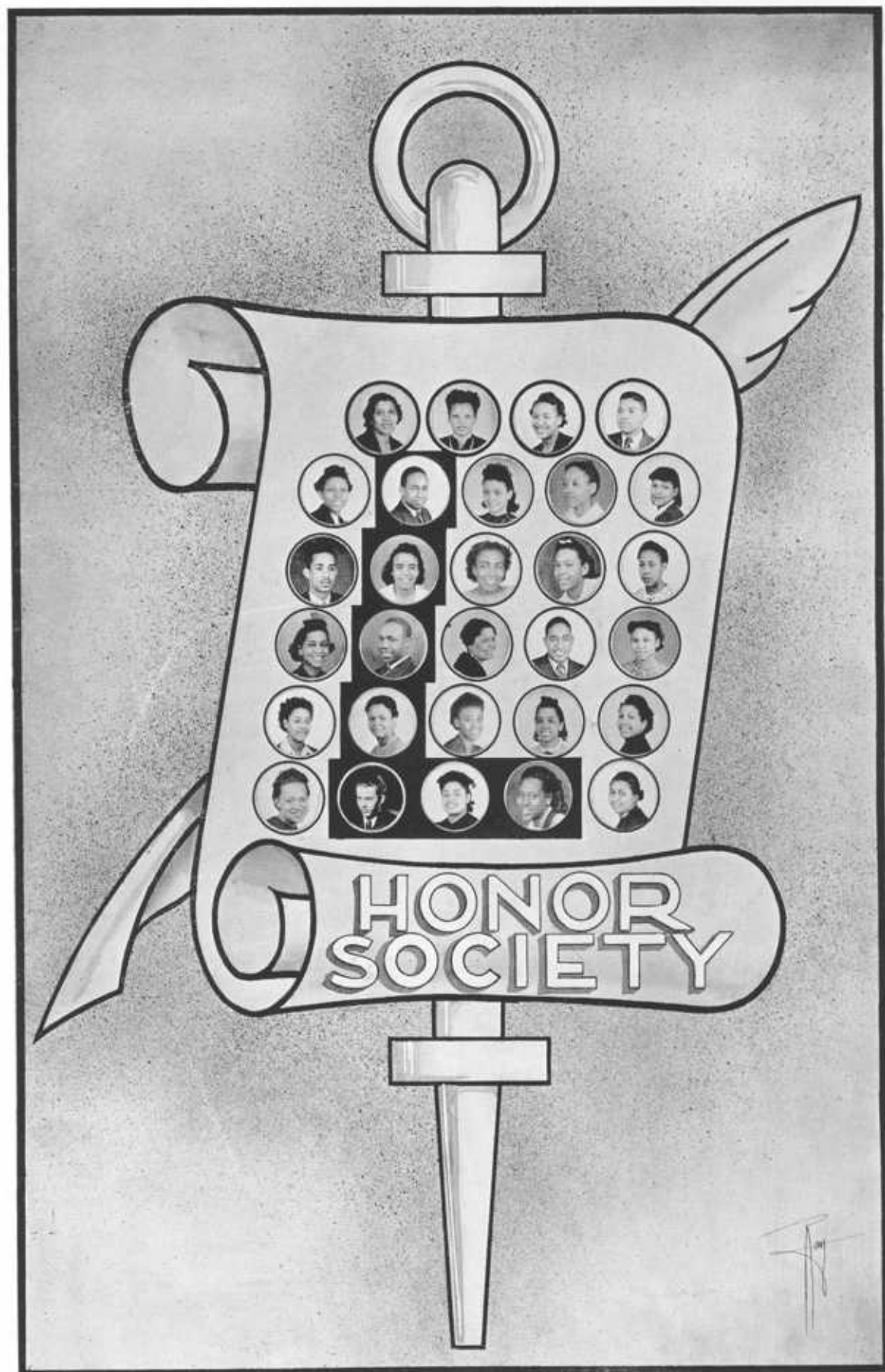
•
Willing Cooperation
Unfailing Loyalty
Unselfish Service
•



•
Logical Thinking
Wide Reading
Creative Writing
•



Honorary Members and Charter Graduate Chapter



LITERATI HONORARY SOCIETY JEWELS



PRESENT MEMBERSHIP

Historical Glimpses of Literati Honor Society

OFFICERS—President, Earl Bass; Vice-President, Samuel Cutley; Secretary, Virginia Mason; Assistant Secretary, Cynthia Hayden; Treasurer, Temple Beavers; Reporter, Mae T. Barbee; Dean of pledges, Evelyn Dumas; Business Manager, Elizabeth Grinstead.

The Literati Honor Society, founded as a Literati Club in the fall of 1933, by Miss Zelma Lenora Redmond, English Department, has for its aims the improvement of self-expression, the instillation of the desire to use correct English, and the art of creative writing. The major aim is the functioning of the Honor Society with the Administration as a cooperative service unit.

The Society is composed of four chapters, listed here in the order of their organization:

1. Charter Chapter—College Students.
2. Duo Chapter—College Summer School Students.
3. Junior Chapter—Junior and Senior High School Students.
4. Graduate Chapter—Faculty Members and Graduates of the College.

To qualify for membership in any under-graduate Chapter of the Society, a student must maintain an average of "B" or above in English, and he must possess some creative ability.

A distinguishing feature of the Society is its Roster of Jewels, who are members that have made worthy literary contributions for four years, and who led in the cooperative service unit. Certificates of merit, signed by the President, the Dean and the Founder, are awarded the Jewels, and they are the only members in the under-graduate Chapter, eligible to wear the Gold Scroll Key.

Public annual programs include: Vesper Services, Sunday School, observance of Negro History Week, debates, book exhibits and dramas.

Literary contributions include the biography of President W. J. Hale, entitled, "A Man for the Ages"; a collection of original literature, entitled the "Beacon"; an original play written by Herman J. D. Carter, and presented by the members, "Sorority Money," books of original poetry—"Scottsboro Blues," Herman Carter; "Volga Whispers," Troy Jeter; anthologies of English and American Literature, and a collection of the philosophies of life of great Americans entitled "Life."

The literary hobby of the Society, collecting philosophies of life of great Americans, has acclaimed national attention and praise. Even the Hobby Guild of America offered to finance the publication of this compilation. Among the philosophies of life included in the compilation are those of the following Presidents of colleges: W. J. Hale, Mary E. Branch, J. R. E. Lee, J. L. Cunningham, Dwight O. Holmes, Thomas E. Jones, Leslie P. Hill and P. R. Clement. Other educators: W. E. Turner, Charles S. Johnson, George W. Gore, Jr., Ambrose Caliver, James A. Atkins, J. C. Napier, Henry A. Boyd, Russell A. Lase, Ullin W. Leavell, and many others too numerous to list here.

Among the publishers, editors and organizations that have accepted the creative literature of the Literati Honor Society are: The Hobby Guild of America, the Little Playhouse Group of Philadelphia, the National Tuberculosis Association, Carlyle Straub, Editor of The Muse, N. Y., the Chicago Defender, the Crisis, Pittsburgh Courier and A. and I. State College Bulletin.

TESTIMONIALS

"I wish to congratulate you on the great success of the play "Sorority Money," that was presented by the Literati Honor Society. The Literati Honor Society is indeed an asset to the college. Greater success in the years to come is wished to you and the society."—Mae W. J. Hale.

"Mrs. Roosevelt appreciates your very kind letter, and wishes me to thank you for inviting her to contribute to the interesting collection which the society is making."—Malvina T. Scheider, Secretary.

"I wish to congratulate you and your associates on this fine project."—M. W. Connor, Coppin Normal School, Maryland.

"With best wishes for continued success for the fine work which the society is doing."—R. O'Hara Lanier, Houston College, Texas.

"I am hoping for the Literati Honor Society a successful year."—Mary E. Branch, Tilletson College, Texas.

"I think that your organization deserves to be commended for its excellent spirit, and the quality of work which it does."—George W. Gore, Jr.

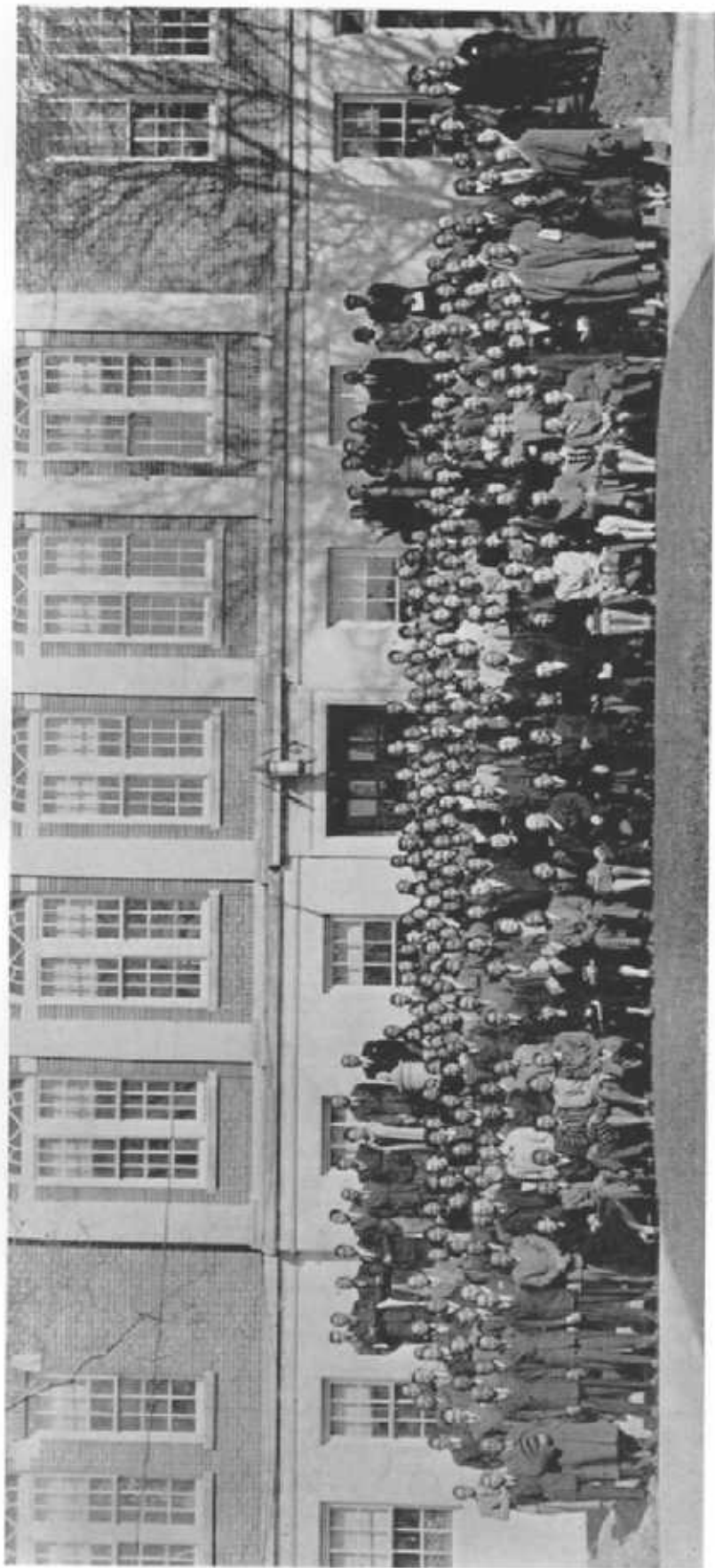
"Accept my sincere congratulations on the recognition that such participation has brought the members and our institution."—President W. J. Hale.

LIVE ON

Live on, live on, live on
O Society, Literati!
Like a great oak tree, live on
As in the past thou hast done.
Let each branch greater height reach,
A finer, nobler lesson teach.
Until the true and lofty aim,
Thy dear founder had in view,
In all its splendor comes true,
Live on and spread like a tree
While we, thy members, cherish thee,
Literati Society, live on!

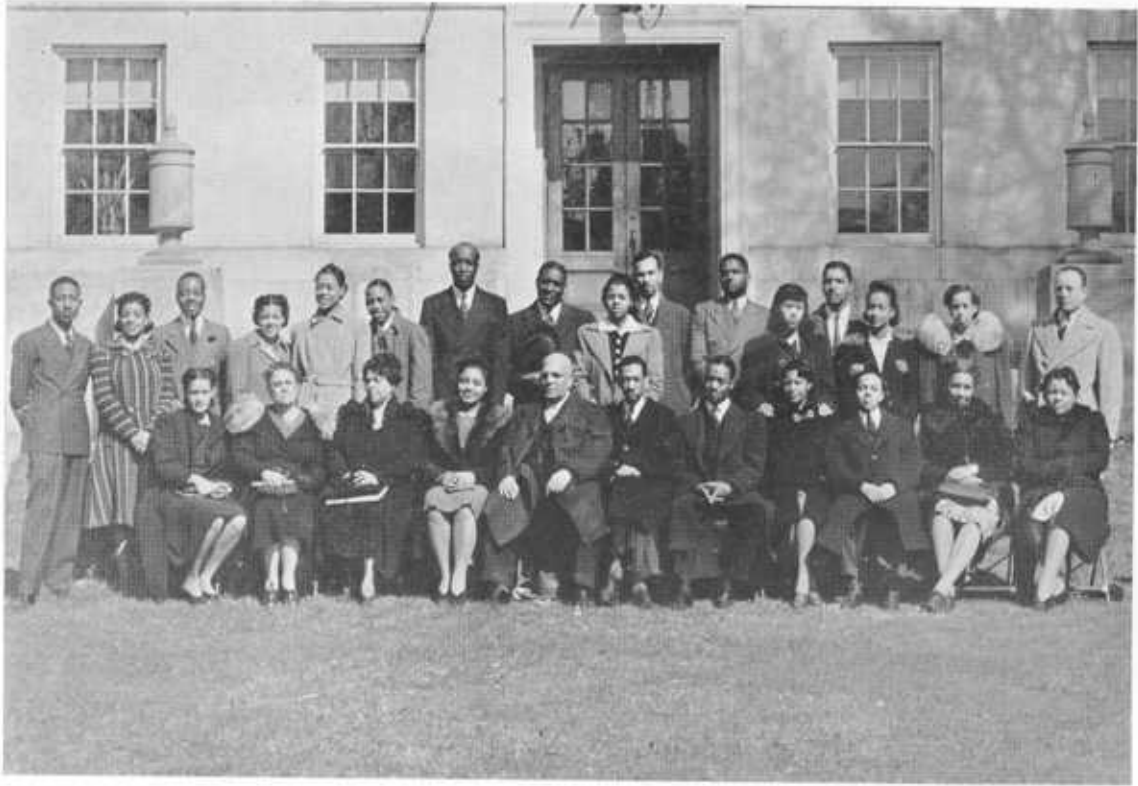
—TEMPLE BEAVERS

Sunday School



Faculty, Cabinet Officers, and Students of the Sunday School — 1940-41

Sunday School



The Sunday School Cabinet is composed of the officers of the Sunday School and faculty members from the regular teaching staff who are class instructors.

CABINET OFFICERS

SENIOR CLASS—Leon Carter, President; Evelyn Hodges, Secretary.

JUNIOR CLASS—Cecil Harvey, President; Grace Spearman, Secretary.

SOPHOMORE CLASS—William Mayes, President; Martha Dumas, Secretary.

FRESHMAN CLASS—Clarence O'Neal, President; Eloise Arnold, Secretary.

TEACHING STAFF

SENIOR CLASS—Mrs. A. Dunn-Jones, Miss Laura M. Averitte.

JUNIOR CLASS—Mrs. L. B. Watson, Miss Carolyn Johnson.

SOPHOMORE CLASS—Miss Lois Daniel, Mr. J. C. Ballard.

FRESHMAN CLASS—Mr. A. V. Boswell, Miss Frances Thompson.

Mr. R. E. CLAY, Faculty Adviser

NEAL McALPIN, Assistant Superintendent

Dr. G. W. GORE, Jr., Faculty Adviser

MAE T. BARBEE, Secretary

RUSHTON MILLER, Superintendent

ETHEL BANKS, Assistant Secretary

IRA E. EVANS, Treasurer

The Tennessee State College Sunday School is only one of the many opportunities the student has for religious meditation and concentration. It is a regular Sunday morning service held for a period of one hour under the faculty direction of Mr. R. E. Clay, State Building Developer, and Dr. G. W. Gore, Jr., director of instruction. Class instructors are members of the college faculty. The fraternities, sororities, clubs and other organizations sponsor the programs which bring well informed speakers and other forms of wholesome entertainment.

The Sunday School as well as all religious activities of the college, receives the hearty cooperation of President W. J. Hale who believes "that the inspiration and stimulation which grows out of this type of experience, will be most valuable to the students in their effort to evolve satisfying philosophies of life in a changing world."

Delta Phi Delta



Fourth Estate



Delta Phi Delta Journalistic Fraternity was organized at Morehouse College in 1937. Beta Chapter was established at Tennessee State College in February, 1937, with Director G. W. Gore, Jr., adviser.

Among the major projects sponsored by Beta Chapter are: The Ayeni Collegian, begun in the fall of 1938; the Second Annual Convention of the organization, April, 1939; two editions of the Ayeni, the college Year Book—1939, 1941; and the observance of National Negro Newspaper Week.

The Fourth Estate is the pledge club of Delta Phi Delta. Requirements placed upon those qualifying for membership are according to an Appointed Committee, made up of members of Delta Phi Delta.

MEMBERS: Edward H. Hale, Billy Jones, John L. Wilson, Earl E. Bess, Indianola E. Hayes, Mae T. Barbee.

FOURTH ESTATE: Clarice M. Chambliss, Walter C. Pinkston, Helene S. Andersen, Frederick Sumrall, Mary F. Suggs, Joanna Strong, Tranny Arnold, Helen M. Seeney, Gladys V. Wells, Irene E. Baker.

ADVISERS: Director G. W. Gore, Jr.; Mrs. A. Dunn-Jones, Miss Lois Daniel.

Alpha Kappa Alpha Sorority



Alpha Kappa Alpha Sorority was founded in January, 1909 at Howard University in Washington, D. C. Alpha Psi Chapter was organized at Tennessee State College on May 13, 1932, and from that time to the present has been involved in a cycle of campus history. During the nine years of its existence, Alpha Psi has presented five "Miss Tennessees" and an Omega Psi Phi Mardi Gras Queen to the public. Alpha Psi Chapter comprises a larger percentage of Phi Beta Tau Chapter members of Alpha Kappa Mu than any other single campus organization. It is an annual custom for the chapter to sponsor a "Welcome to School" project, which is given to greet old and new students coming to the college at the opening of the school year. Coupled with the celebration of Founder's Day, Alpha Psi Chapter was hostess to the famous Soror, Etta Moten. Founder's Day was celebrated by a banquet, at which all Sorors in the city of Nashville renewed that grand Alpha Kappa Alpha spirit. Culminating a successful year of contributions which included scholastic attainments, cultural and aesthetic contributions, and charitable donations, Alpha Psi will present its annual Spring Dance, May 17, 1941 as its major social event.

Alpha Psi Chapter plays a vital part in the campus life of A. and I. State College, and is merely a link in the huge chain of the Alpha Kappa Alpha Sorority which strives to uphold ethical standards, finer womanhood, scholarship and service to the Negro race.

OFFICERS

Ethel Banks	Basileus	Emma Hines	Hodegus
Annie Young	Anti-Basileus	Helen Mathis	Parliamentarian
Myrtle Banks	Grammateus	Evelyn Dumas	Reporter
Frances Curry	Epistoleus	ADVISERS: Miss Lois Daniel, Miss Modestine Young.	
Geneva Morrow	Tamiochus-Dean of Plegees		
H. Louise Glover	Sentinel		

Alpha Kappa Alpha Snap-shots



Down: Soror K. Coleman ("Miss Tennessee A. and I.") Sorors D. Thomas and Louise Glover strolling on the campus. Soror A. Dunn-Jones, Faculty Co-Adviser.

Down: Soror Irene Baker ("Miss Popularity.") Soror Lois Daniel, Faculty Adviser. Soror Marie Baxter in Dance Rehearsal.

Center Top: Soror Modestine Young as she appeared in a Recital presented by Alpha Psi Chapter.

Center: Sorors M. Banks, E. Banks and L. Bland, Members of Alpha Kappa Mu Honorary Scholastic Fraternity leaving Library.

Lower Center: Sorors G. Spearman, E. Dennard, F. Curry, Alpha Psi trio.

Ivy Leaf Club



THE IVY LEAF CLUB OF ALPHA KAPPA ALPHA SORORITY

In contributing to the cultural and social pattern of campus life, the Ivy Leaf Club presents its best talents in the Vesper and Easter Sunday programs. "An Evening of Song and Verse," the Vesper program of the year, included selections by noted musicians, and hymns, essays, narratives and lyrics by well-known authors. "The Resurrection," a drama, was presented at dawn for the Easter morning services of the Sunday School. An Annual Egg Hunt, given for the members of the Sunday School, follows the morning services, and all arrangements are made by members of the club. Aside from these two major programs, many of the members participate in the general and departmental activities.

OFFICERS

Marie R. Grant	President	Claudyne Rogers	Treasurer
Anasteen Piersawl	Vice-President	Pauline Weir	Reporter
Clara Washington	Secretary	Loretta Miller	Pianist
	Miss Geneva Morrow		Dean of Pledges

ADVISERS: Miss Lois H. Daniel, Miss Modestine Young.

MEMBERS

FIRST ROW, left to right: Louise Iles, Clara Washington, Ethel Holland, Mary Ward, Lena Rhodes, Cecelia Streeter.

SECOND ROW, left to right: Gladys Starks, Pauline Weir, Anne Galloway, Gladys Burgess, Louise Warner, Harriet Davis, Thelma Thomas, Marie Grant, Claudyne Rogers. Not included on picture: Camille Evans, Margaret Marsh, Loretta Miller, Mildred S. Porter, Emma Richards, Dorothy Turner.

Delta Sigma Theta Sorority



Alpha Chi Chapter Delta Sigma Theta Sorority

CHAPTER ROSTER

Helene Andersen	President	Gladys Wells	Parliamentarian
Phyllis Falls	Vice-President	Gladys Hurt	Dean of Pledges
Mary Suggs	Secretary	Vera Allen	Assistant Dean of Pledges
Clarice Chambliss	Assistant Secretary	Dorothy Beatty	Reporter
Argatha Baugh	Treasurer	Ruby Debose	Sergeant-at-Arms
Miss Madelon Battle		Advisor	

MEMBERS

Marian Howell	Joanna Strong
Ruby Miller	Mrs. E. B. Thompson
Myriam Richardson	Rita Wilson
Anita Smith	Anne Winfrey
Ruth G. Smith	Helen Wrenn

HISTORY OF DELTA SIGMA THETA SORORITY

A meeting on January 14, 1913, in Miner Hall, at Howard University, was the nucleus of the Greek Letter organization, later known as the Delta Sigma Theta Sorority. The purpose of this meeting was to secure permission of the university authorities and to draw up Constitution and By-Laws. On the 22nd day of the same month, the Sorority was formally organized. For almost a year this first Chapter of Delta Sigma Theta Sorority lived and grew through additions from the several classes of the university.

Alpha Chi Chapter of Delta Sigma Theta Sorority was established on A. and L.'s campus, May 2, 1936, with six young college ladies. Since that time Alpha Chi has grown rapidly in scholastic and cultural achievements. This Chapter is nationally known for the presentation of its annual "Jabberwock," which is an imaginary creature. The proceeds from the Jabberwock are awarded in the form of a scholarship to the Freshman young woman having the highest scholastic average for four years of high school work. This year's award went to Miss Jeraldine Harven, of Paducah, Ky.

Although Alpha Chi is the youngest Greek Letter organization on the campus, the Chapter has twice been recipient of the silver loving cup, given by the History Study Club for outstanding cultural contributions. Some of the members who have brought recognition to the chapter for the year are: Miss Gladys Wells, who was awarded third prize in the nation-wide "Miss Beonse America" contest; Miss Anita Smith, crowned queen of the History Study Club; Miss Gladys Hurt, elected "Miss America." On the academic front, Miss Mary Frances Suggs has been distinguished in recently being initiated into Alpha Kappa Mu Honorary Society. Alpha Chi endeavors to maintain its standards by continuing its social and cultural contributions to the atmosphere of the campus.

Pyramid Club



The Pyramid Club of Delta Sigma Theta Sorority has been an active participant in extra curricular activities during the school year 1940-41. At the same time we, as members, have striven to maintain high scholastic ratings.

We have sponsored several activities such as a "Dinner Dansant," "Pyramid Den," at open house of Hale Hall, for which we received a prize. Mrs. Charles S. Johnson was the distinguished speaker for our Sunday School program. In our Vesper Program, April 27, we attempted to call attention to the important role Negro women have played in American life, by relating incidents from the lives of a few outstanding women leaders.

The Pyramid Club shall ever work to be an integral part of A. and I. campus life, and a credit to Delta Sigma Theta Sorority.

OFFICERS

Willie I. Stevenson	President	Harriet E. Ray	Treasurer
Doris L. Crosby	Vice President	Avis R. Ewing	Reporter
Effie N. Finley	Secretary	Marjorie Hart	Chairman Program Committee
Bessie I. Finley	Assistant Secretary	Dorothy Thompson	Sergeant-at-Arms
Temple Lay	Chaplain		

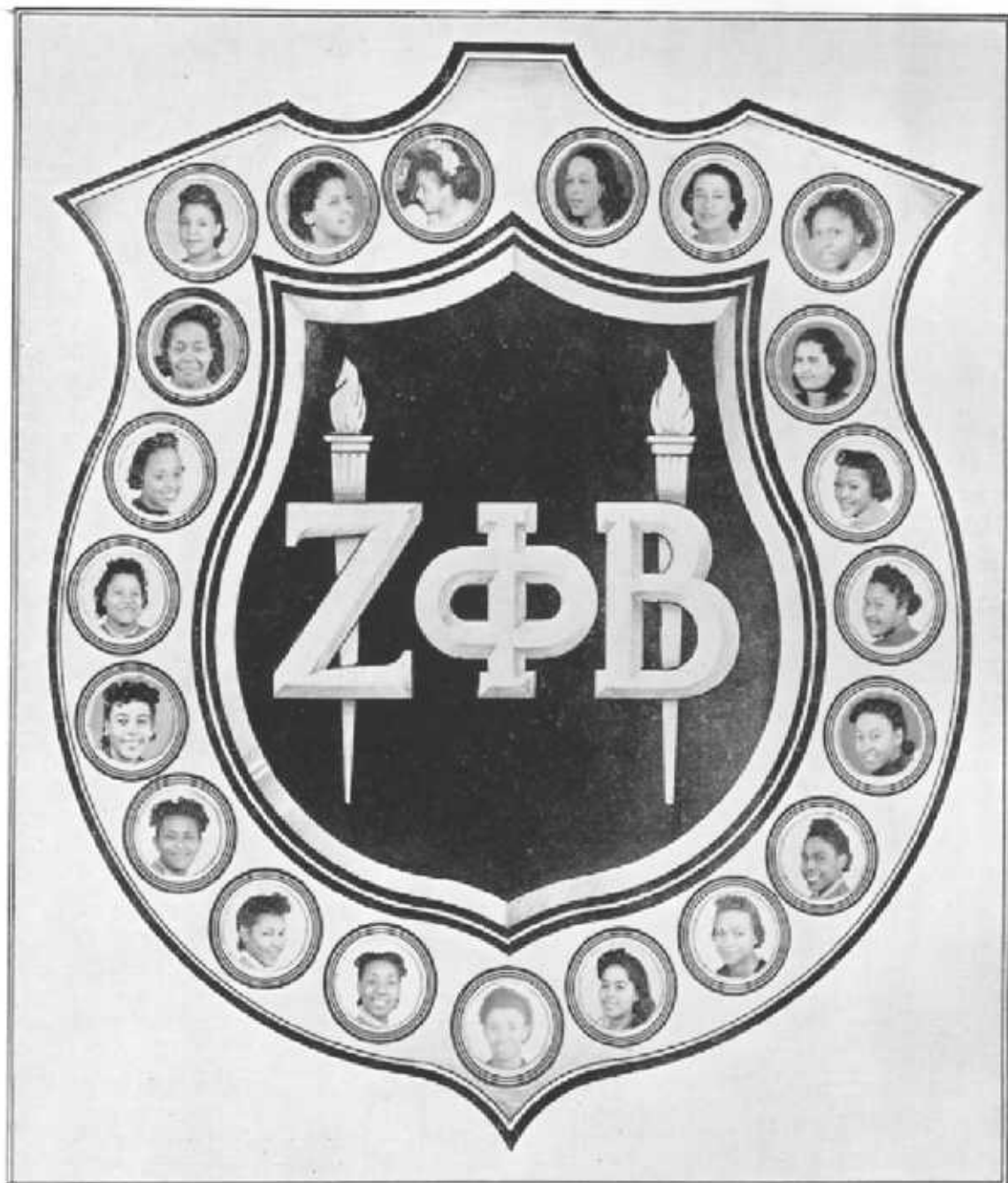
MEMBERS

Clara Compton	Rowena Henry
Minnie Compton	Clintonia Thompson
Dovie Harris	Eugenia Mobley
Gladys House	

Epsilon Alpha Chapter Zeta Phi Beta Sorority

MEMBERS

Charity M. Martin	Basileus	Mary F. Miller	Anti-Grammateus
Ida Marie Stockard	Anti-Basileus	Mary Griffin	Parliamentarian
Myrtle P. Bond	Grammateus	Bernice A. Eskridge	Tamiochous
	Mrs. Marie Brooks-Strango	Adviser	



Martin, Charity M.
Miller, Mary F.
Mitchell, Jennie M.
Moore, Mary Etta
Polk, Beatrice

Shorter, Ann
Simon, Havana
Stodds, Helen
Stockard, Ida M.
Taylor, Claudia

MEMBERS

Avent, Myra
Bradford, Emma
Bond, Myrtle P.
Bostic, Anne
Cox, Helen

Elliott, Aurelia
Eskridge, Bernice A.
Griffin, Mary
Kidd, Willie M.
Lowe, Ruth

Archonian Club of Zeta Phi Beta Sorority



The Archonian Club has grown to be one of the largest pledge clubs on the campus. The success of the club depends largely upon the active efforts of our adviser, Mrs. Marie Brooks-Strange, who contends there is "Power in Numbers."

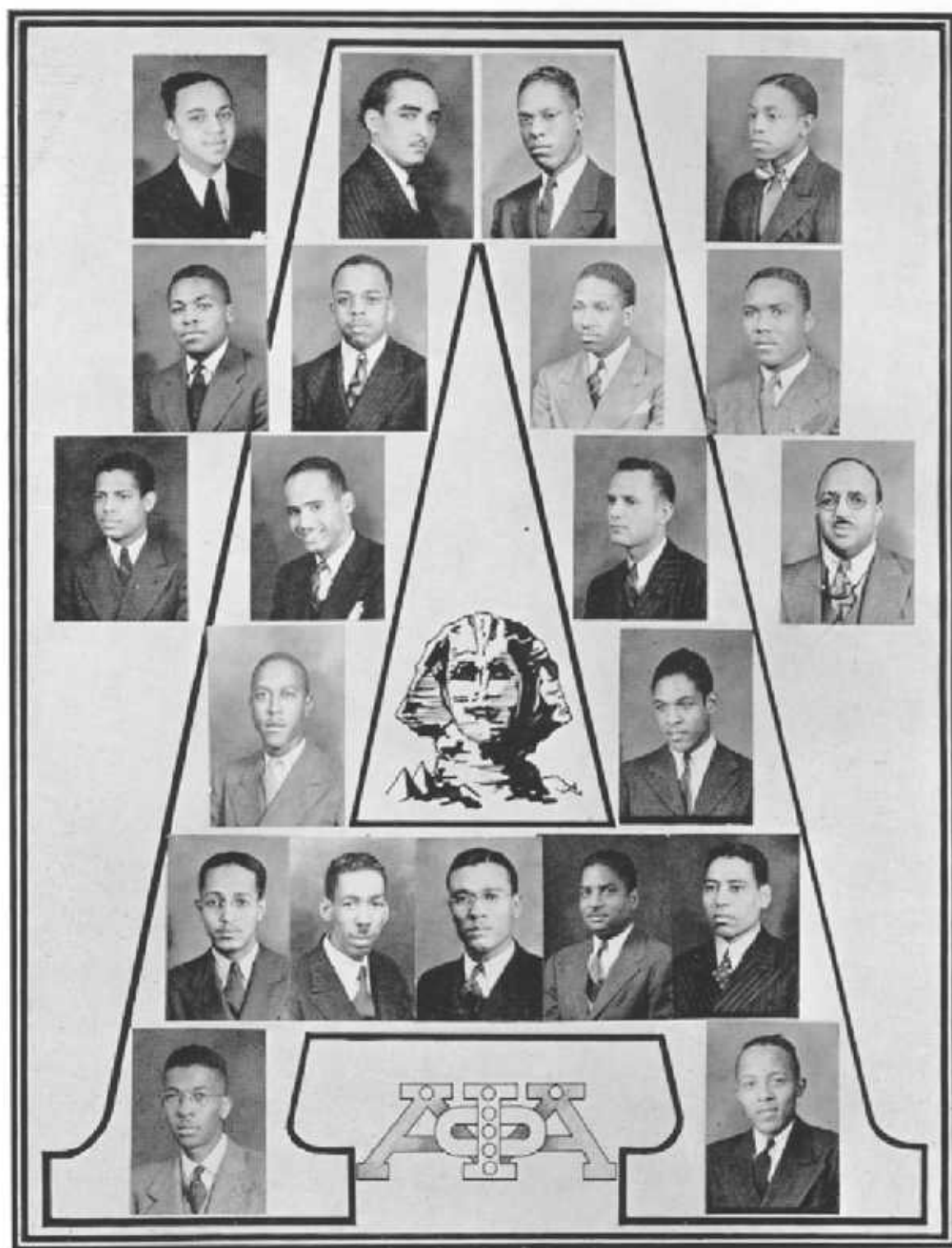
OFFICERS

Mittie Bell Almon	President	Ariadoll Davis	Treasurer
Bessie Ramsey	Vice-President	Desmond House	Chaplain
Etholyn Hamlar	Secretary	Davella Battle	City Reporter
Annie Boyd	Assistant Secretary	Zephree Jackson	Campus Reporter
Willis Easterly		Pianist	

MEMBERS

Hattie Boyd	Martha Fowler
Lessie Braden	Edna Bradley
Irene Grinstead	Limmie Smith
Elizabeth Grinstead	Julia Mitchell
Heddy Jackson	Robbie Rogers
Jean Woodfolk	Minnie Simms
Edith Bailey	Berry Crawford
Virginia Mason	Etholyn Jackson
Alleine Collins	Uvaller Gerron

Alpha Phi Alpha Fraternity



Beta Omicron Chapter Alpha Phi Alpha Fraternity

"First of All, Servants of All, We Shall Transcend All."

Seven young men of Cornell University, 1906, founded the first Negro Fraternity, namely, Alpha Phi Alpha. With a slogan of Scholarship, Fellowship and Devotion, the organization soon spread to other colleges and cities until now there are one hundred sixty-four Chapters located in various parts of the United States and foreign countries, which take part annually in the nationally sponsored activities, the "Go To High School—Go To College" movement and the "Education For Citizenship" campaign.

Twenty-four years later, in the year 1934, seven young men founded the fifty-sixth Chapter of Alpha Phi Alpha, Beta Omicron. It was thus then that the oldest Negro Fraternity (nationally) was born the youngest "Frat" (locally.) Since then it has helped mould high aims and ideals into the lives of many young men who have gone from the college to become leaders in all walks of life.

The Chapter at present has twenty-three members, including many outstanding personalities. Brother Leon J. Carter, Jr., is president of the Ohio Club, president of the Senior Sunday School Class and Technical Director of the Tennessee State Players Guild, Brother James A. Jackson is a member of Alpha Kappa Mu Honorary Scholastic Fraternity, Brother Ira E. Evans, Jr., is president of the Tennessee State Players Guild, treasurer of the Sunday School, circulation manager and assistant comptroller of the Ayoni, Brother Billy Jones is the Editor-in-chief of the Ayoni, national vice-president of Delta Phi Delta, Honorary Journalistic Society, Anti-Basilus of Alpha Kappa Mu Honorary Scholastic Fraternity, student publicity director of the college, student Dean of Men and Dean of Beech-nut representatives in Negro colleges, and holds the distinction of being the first and only Negro salesman of the Beech-nut Company.

The following brothers are not shown on the picture: Harold Jenkins and Arthur Ceize.

ROSTER

Billy Jones	President
Alvin Roundtree	Vice-President
Ira E. Evans	Secretary
Leon J. Carter	Treasurer
Julius Higgins	Chaplain
James A. Jackson	Sergeant-at-Arms

ADVISERS: Dr. George W. Gore, Jr., Attorney R.B.J. Campbell, Mr. J. D. Hayes, Mr. L. Lennon.

MEMBERS

Edward Hambrick	Arthur Caine
Charles Corley	Harold Jenkins
William Porter	Joseph Green
William Dickerson	R.B.J. Campbell, Jr.
Arthur Rogers	Julius McMillan
Fambro Kendricks	Walter House
William Smith	William Rhoden
Ulysses Wilhoite	Bernard Hockenhill

Robert Trice

Sphinx Club of Alpha Phi Alpha Fraternity



The Sphinx Club of Beta Omicron Chapter of Alpha Phi Alpha Fraternity, is composed of young men who aspire to join the ranks of noble Alpha Phi Alpha. It is recognized by its emblem, the Mighty Sphinx.

The club is very active in the various activities on the campus and sponsors annually, dinner dance, Sunday School, Sunday Vespers, and Sphinx Night.

ROSTER

Tranny Arnold	President	Oscar Farmer	Chaplain
Joseph Thomas	Vice President	Robert Stewart	Reporter
Charles Brooks	Secretary	Alvin Calhoun	Business Manager
Joseph Stevens	Assistant Secretary	Frank Ballard	Chmn Executive Committee
Edward Rhodes	Treasurer	Paul Quinichette	Chmn Program Committee
Ferdinand Holmes	Parliamentarian		

MEMBERS

George Moore	William Turner
Clarence Johnson	Ellis Woods
Warren Benbow	William Coles
George Rajcoomar	

Kappa Alpha Psi Fraternity



Kappa Alpha Psi Fraternity

The fundamental purpose of Kappa Alpha Psi Fraternity, is achievement. It was with this purpose in mind that ten men at Indiana University on January 5, 1911 first founded what is now known as Kappa Alpha Psi Fraternity.

Alpha Theta Chapter of Kappa Alpha Psi Fraternity was established at Tennessee A. and I. State College, May 23, 1931. And since that time has proved to be one of the outstanding organizations on this campus and in the city of Nashville.

The school year of 1940-41 found Alpha Theta Chapter well represented in the major activities of the school. Six Brothers made the Dean's list, namely: Brothers Benjamin F. Mallard, Robert Jordan, John Woodland, Neal McAlpin, Charles Goodman and Henry Atwater.

During the basket ball season, Alpha Theta had the outstanding interfraternal team, plus placing three men on the school varsity. They were Brothers Roland E. Jones, Wesley Logan and Fred Lash.

On the gridiron Kappa was also outstanding with Brothers Charles Goodman, captain of the Tennessee Tigers; Andrew Lewis, back; Wesley Logan, end; Waldorf A. Johnson, back; Henry Atwater, guard, and Neal McAlpin, center.

Alpha Theta Chapter is also proud of its tennis team, composed of the following Brothers: Roland E. Jones, Joseph C. Marshall, Samuel V. Coleman, Fred Lash.

Other Kappa features at Tennessee State College include the following: Sunday School program, Vesper program, Observance of Guide Right Week, a Smoker for new students and Freshmen, Kappa Kountry Carnival, annual picnic, and the annual spring dance, one of the school's most entertaining affairs.

Members of the Faculty who are Kappa's include the following: Professors Merl B. Eppse, Robert L. Williams, Edward T. Johnson, Richard T. Waymer, F. C. Mourning, Grady Sherrill, Arnold Daniels.

OFFICERS

Joseph C. Marshall	Polemarch	Andrew Lewis	Strategus
Earl Foster	Vice Polemarch	Walter Young	Historian
Fred Lash	Keeper of Records	Walter K. Young	Journalist
Neal McAlpin	Keeper of Exchequer	Charles M. Holley	Lt. Strategus
Charles L. Goodman	Dean of Pledges	Robert E. Williams	Chaplain

MEMBERS

Henry Atwater	James Farrell
Brandon Barton	Benjamin F. Mallard
Jerry Bundy	Elmer Smith
Wesley Logan	Cecil Harvey
John C. Woodland	Major Jarrett
Richard Showes	Roland Jones
Samuel Coleman	Robert Jordan
Joseph Eppse	Waldorf A. Johnson

The Scrollers Club of Kappa Alpha Psi Fraternity



On the campus of Ohio State University, May 15, 1919, the first Scrollers Club was formed. The purpose of the club was to guide and train young men who aspire to become members of Kappa Alpha Psi Fraternity in the ideals and ways of the Fraternity. So well was this idea received, that at the present day each of the under-graduate chapters now has a Scrollers Club, of which it can be proud.

The Scrollers Club of Alpha Theta Chapter was organized in 1900, and since that time, has successfully defended its reputation of being one of the outstanding pledge clubs.

They have distinguished themselves in sports, music, art and scholarship. From the rank of the Scrollers Clubs have come honor roll students, orchestra leaders, journalists, and countless others of diversified talents.

Twenty different cities in eleven states give the present Scrollers Club its roster of twenty men. These men quite ably represent their organization in the currently popular college activities, such as basketball, art, scholarship, tennis, music, football, etc.

Confident that the fair name of the Scrollers Club will not be tarnished because of us, we the members of the 1940-41 Club sincerely hope that the clubs of the future years will live up to the high standards we have set.

OFFICERS

	Jesse O. Dupree	President	
Malvin E. Martin	Vice-president	Norman Walton	Chaplain
William A. Mays	Secretary	Harvey D. Reed	Editor
Thomas R. Booth	Assistant Secretary	John W. Butler	Business Editor
John A. Gregory	Treasurer	William Stubblefield	Sergeant-at-Arms

ROSTER OF MEMBERS

Cecil Davidson	Norman L. Burford	John L. Clay	John H. Sheppard
Earl D. Gipson	Agustus James Rutledge	Carl B. Elston	Ordell Yarbrough
Hodge Boykin	Henry C. Conerway	Lawrence M. McVoy	

Phi Beta Sigma Fraternity



ROSTER OF MEMBERS

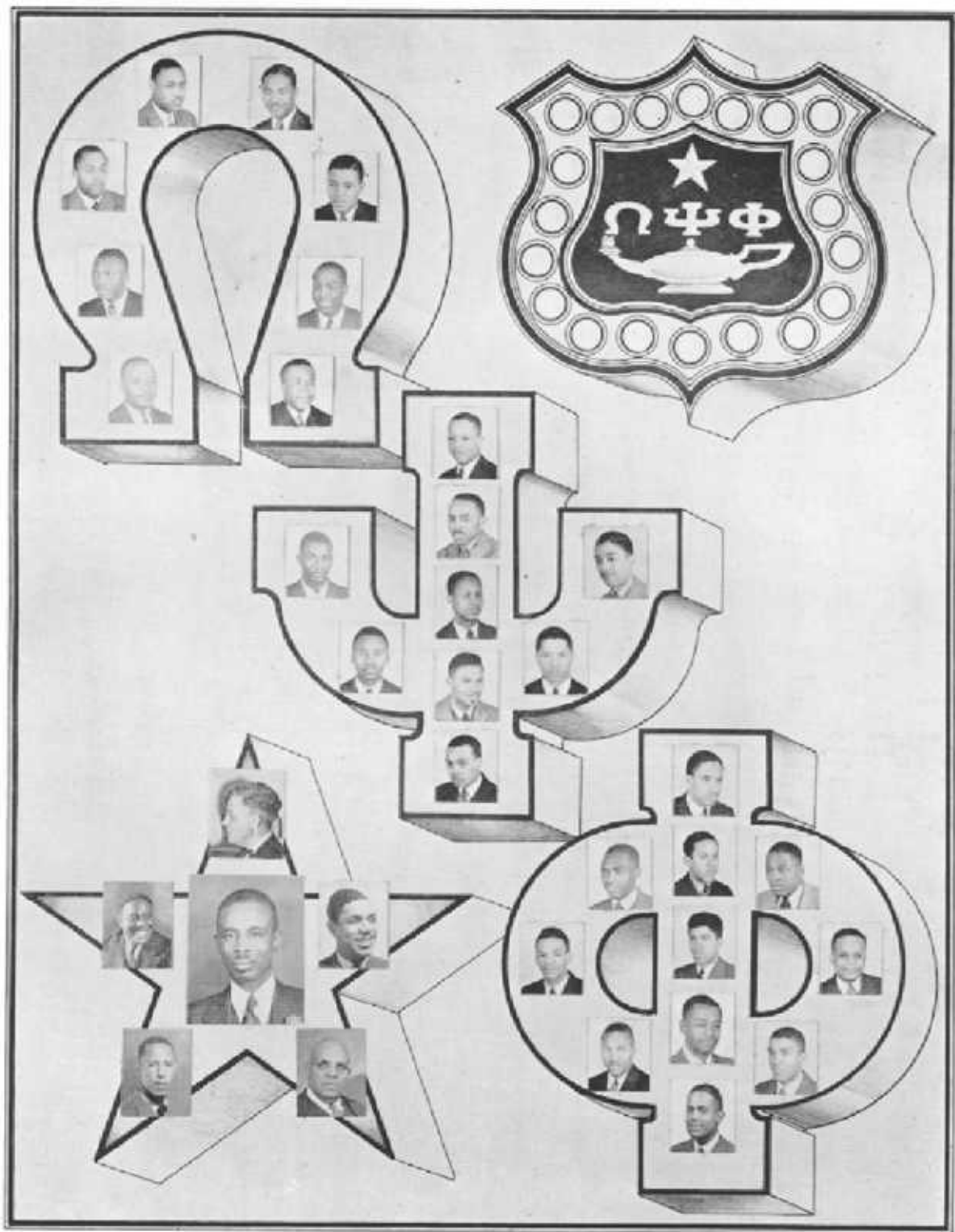
TOP ROW (left to right): J. C. Ballard, Dean of Men, Professor of History and Social Science, Adviser; Davis Delano Owens, President, Carthage, Tennessee, Hobby, "Orating and Debating"; A. V. Boswell, Professor of Mathematics, Cashier, Adviser.

MIDDLE ROW (left to right): Charles William Haynes, Business Manager, Murfreesboro, Tennessee, Hobbies, "Singing and baseball"; John Claudius Weaver, Dean of Pledges, Rockaway Beach, New York, Hobby, "Analyzing Explosives"; Fred J. Banks, Jr., Silver City, Mississippi, Hobby, "Living the Ladies"; Martin ("Pack") Taylor, Vice-President, Brownsville, Tennessee, Hobby, "Counting His Money."

BOTTOM ROW (left to right): Shirley Wales Shockley, McMinnville, Tennessee, Hobby, "Boxing"; Hessel Green Woods, Treasurer, Murfreesboro, Tennessee, Hobbies, "Baseball and Soft Ball"; Preston Harris, Greensboro, North Carolina, Hobby, "Singing"; John Ivory Campbelle, Ripley, Tennessee, Hobby, "Soft Ball."

BOTTOM (center): Robert L. Bailey, Secretary, Trenton, Tennessee, Hobbies, "Swimming and Writing Poems."

Omega Psi Phi Fraternity



Omega Psi Phi Fraternity

RHO PSI CHAPTER — CONCLAVE HOST, 1940-41

During the Conclave, 1940-41, Rho Psi Chapter, the model chapter of the Omega Psi Phi Fraternity, took the lime-light as it gave to the National Organization its Lampados Song (Pledge Club Song) composed by Hilton Owens and its Sweetheart Song, composed by Don Q. Pullen. The national body voted unanimously that recordings of these two songs be made by Rho Psi Chapter and circulated wherever chapters and Omega men were located. This is a distinct national honor which has never before been bestowed upon any fraternal group. Rho Psi Chapter is happy to merit such recognition from the national body.

It is quite necessary that special mention be given certain brothers of our great fraternity as they have distinguished themselves in many different lines of work and service. Frederick Sumrall has diligently served Rho Psi Chapter for some four years as Neophyte Commandant. He has proved to his brothers and men about the city that he has the ability to lead and to encourage men to be true and loyal.

R. E. Clay, another dynamic figure of Rho Psi Chapter, has been a true and trusting friend through all these years. He is a member of the faculty at Tennessee State College, superintendent of the Sunday School and State Developer of Negro Education. He holds many other positions, as secretary, and member of the executive committee of the Tennessee Negro Education Association.

W. C. Pinkston and Rushton Miller deserve special mention for their musical contributions to Rho Psi Chapter. Miller is leader of the Tennessee State Collegians and vice-president of the Senior Class. Pinkston has instituted "Omega Sings"—a night of singing sponsored by Omega Psi Phi Fraternity—a display of the musical talent of Omega men. There is plenty of musical talent among the Omega men at Tennessee State College. The following brothers play in the college orchestra: Lawson, Holmes, Miller, Owens, Pinkston, and Weathers.

Mose J. Davie, president of the Industrial Education Club and secretary of the Y.M.C.A. also merits special mention for his untiring efforts to make Omega what it should be here at Tennessee State College.

Calvin Gibson, a small but mighty man from New York, has lent unstinted aid to Omega Psi Phi. He is Keeper of Finance for Rho Psi Chapter.

OFFICERS OF RHO PSI CHAPTER

Basileus, Walter C. Pinkston, Senior; Vice-Basileus, Rushton Miller, Senior; Keeper of Records, James Lemons, Senior; Keeper of Finance, Calvin Gibson, Senior; Editor, John L. Wilson, Senior; Keeper of Peace, David Ulmer, Junior; Neophyte Commandant, Frederick Sumrall, Senior; Assistant Neophyte Commandant, John L. Slaughter, Junior; Assistant Keeper of Records and Seal, Melvyn Sudberry, Junior; Parliamentarian, Mose J. Davie, Junior; Craftsman, LaVerne Crawford, Senior. Faculty members: Josef C. James and Forrest W. Strange, advisers: Thomas E. Poag, Theodore Gould, Thomas G. Lester, R. E. Clay, William Hale, Jr., Wade Wilson, President William J. Hale.

ROSTER OF MEMBERS

William Broednax	Archie King	Walter Pinkston
Clarence Carter	Joseph Lavender	Thomas Royal
LaVerne Crawford	Theodore Lawson	John Slaughter
Mose J. Davie	James Lemons	William Fred Stott
Henry Davis	Alonzo Martin	Melvyn Sudberry
Emanuel Dickerson	Timothy Martin	Frederick Sumrall
Charles Farmer	Rushton Miller	Frank Thomas
Calvin C. Gibson	William Moore	David Ulmer
Gerald Greenfield	James Mullins	Russell Weathers
Herbert Holmes	Ned Neeley	Stephen West
Morse Samuel Houston	Donald Officer	John Wilson
Zaricor Jackson	Hilton Owens	James Woods
Alexander James	Nobel Owens	Horace Young
Kennard Jones		John Weatherford

Omega Psi Phi Snapshots



Lampados Club



Lampados Club

The Lampados Club of Rho Psi Chapter of Omega Psi Phi Fraternity has as its chief aim the promotion of true manhood which is essential to all phases of life. We have tried diligently to exemplify the four Cardinal Principles set forth by the fraternity, namely: Manhood, Scholarship, Uplift and Perseverance, and with all sincerity we are proud to be brothers to such a great National Organization.

The major activities of the year centered around the Annual Sunday School Program and the double feature, the Dinner Dance and the birthday celebration for our beloved Mrs. J. E. Elliott.

OFFICERS

- Walter C. Robinson, II, Vice-President, Sophomore, Chattanooga, Tennessee, a major in History and Social Studies. Member of History Study Club.
- Halbert Edwin Dockins, Secretary, Junior, Starkville, Mississippi, a major in Business Education. Member of Literati Honor Society, History Study Club, Tennessee State Players Guild, Ayen Staff, Fourth Estate of Delta Phi Delta and Alpha Theta Omega Business Fraternity.
- Indianola Ezra Hayon, Assistant Secretary, Senior, Jackson, Mississippi, a major in Business Administration. Member of History Study Club, Alpha Theta Omega Business Fraternity and Delta Phi Delta.
- James Thearon Edwards, Treasurer, Freshman, Nashville, Tennessee, a major in Industrial Education. Member of History Study Club and N.F.A.
- Rouben Don Payne, Assistant Treasurer, Freshman, Newark, Ohio, a major in History and Social Studies. Member of the History Study Club.
- James Enoch Swayze, Pledge Commandant, Freshman, Arkadelphia, Arkansas, Pre-Medic. Member of History Study Club and Arkansas Club.
- Ardis Graham, Chaplain, Junior, Raeford, North Carolina, a major in History and Social Studies. Member of the History Study Club.
- Leonard Donald Thompson, Program Chairman, Junior, Indianapolis, Indiana, a major in Business Education. Member of Tennessee State Players Guild, Alpha Theta Omega Business Fraternity, and History Study Club.

ROSTER OF MEMBERS

- Chauncey Brewster, Junior, Hempstead, New York, a major in Physical Education. Member of History Study Club and Physical Education Club.
- Frederick Leon Broxton, Junior, Graceville, Florida, a major in Business Administration. Member of History Study Club and Alpha Theta Omega Business Fraternity.
- Charles Henry Coleman, Freshman, Spartanburg, South Carolina, a major in Science and Mathematics. A member of History Study Club.
- James Jones, Freshman, Birmingham, Alabama, a major in Physical Education. Member of History Study Club.
- Daniel Lee, Sophomore, Indianola, Mississippi, a major in Agriculture. Member of History Study Club and N.F.A.
- Benjamin Lewis, Freshman, Homer, Louisiana, a major in History and Social Studies. Member of Tennessee State Players Guild and History Study Club.
- Lemuel McKissack, Sophomore, Nashville, Tennessee, a major in Industrial Education. Member of History Study Club.
- James McMillan, Junior, Nashville, Tennessee, a major in History and Social Science. Member of History Study Club.
- Frank Rudolf Motley, Sophomore, Whiteville, Tennessee, a major in Science. Member of History Study Club.
- Marion Bright Smithson, Sophomore, Nashville, Tennessee, a major in History and Social Science. Member of History Study Club.
- Carlton Alexander Sparks, Junior, Jacksonville, Florida, a major in the Pre-Medical Department. Member of History Study Club.
- Knox Tucker, Sophomore, Nashville, Tennessee, a major in History and Social Science. Member of History Study Club.
- William P. Vaughn, Junior, Shreveport, Louisiana, a major in History and Social Science. Member of History Study Club.
- John Williams, Junior, Little Rock, Arkansas, a major in History and Social Science. Member of History Study Club.
- William Wortham, Junior, Memphis, Tennessee, a major in History and Social Science. Member of History Study Club.
- Mitchell Higginbotham, Junior, Pittsburg, Pennsylvania, Pre-Medic.

Alba Rosa Club



Alba Rosa, one of the oldest organizations on the Tennessee State College campus, is a growing club. Its motto, "Row, Not Drift," means a great deal to the women who have become affiliated with it, for they are ever striving for greater and better things. The Club Colors are Pea Green and Pink. The Symbol, the "White Rose," denotes purity of womanhood—a quality which all women should desire to possess. Our purpose is two-fold: to promote scholarship on the campus, and to beautify the campus.

The officers of the Club are as follows:

Helen A. Piersawl	President	Charity Martin	Treasurer
Myrtle Banks	Vice-President	Mary F. Suggs	Chaplain
Edythe Dennard	Secretary	Mrs. Rachel Patillo	Adviser

ROSTER OF MEMBERS

Helene Anderson
Ethel Banks
Myrtle Banks
Mae T. Barboe
Dorothy Beatty
Marie Baxter
Martha Barboe
Myrtle P. Bond
Ruby Debose
Anita Flemming
Desmond House
Margaret Marsh
Ruby Miller
Ewania Patillo
Georgia Pillow
Gladys Shockley

Wille I. Stevenson
Grace L. Spearman
Eloise Arnold
Harriette Davis
Rita E. Wilson
Agatha Baugh
Vera V. Allen
Joanna Strong
Mattie Sue Adams
Jimmie Hunt
Gladys House
Margaret Turner
Jimmie P. Thomas
Dorothy Greer
Helen Wren

Ruth Durham
Charletta Hicks
Lucille Butler
Virginia Hickerson
Vernice Clay
Havana Simon
Marjorie Hart
Dresden Jackson
Gloria P. Boyd
Melvina Hughes
Alberta Butler
Doris Feagin
Lorene Lewis
Pearl Coleman
Clarice Chambliss
Luster Washington

FACULTY MEMBERS

Miss Mildred E. Clift
Mrs. Em. T. Burt-Thompson

Miss Zelma L. Redmond
Mrs. Willette Kilpatrick

Miss Dorothy Garland

Delta Tau Iota Club



Delta Tau Iota is the oldest college women's organization on the campus, having been founded in 1920.

The purpose of this club is to promote healthy, happy womanhood, and to establish high ideals of love and service.

Motto: "Not Evening, But Dawn"

Colors: Old Rose and Silver

Flower: Marechal Niel Rose

●
OFFICERS

Irene Baker	President
Thelma Thomas	Vice-President
Sara Payne	Secretary
Rowena Henry	Assistant Secretary
Lillian Barkstelle	Treasurer
Harriet Ray	Dean of Pledges
Rossella Harper	Reporter
Evelyn Dumas	Sergeant-at-arms
Ina Vernon Dunscomb	Pianist
Pearl M. Gore	Mascot
Mrs. G. W. Gore	Adviser

Elementary Education Club



The Elementary Education Club, one of the oldest clubs on the campus, was organized in October, 1930. This group includes men and women who are interested in the training of boys and girls in the elementary grades. Recognizing that the training of youth has a definite influence on later life, these men and women have chosen this task as their life's work.

Club Motto: "Nothing Without Labor"

Club Flower: Carnation

Club Colors: Old Rose and Grey

OFFICERS

Dorothy L. Thomas	President
Johnson City, Tenn.	
Mary Frances Miller	Vice-President
Nashville, Tenn.	
Audria Mai Suggs	Secretary
Dickson, Tenn.	
Helen A. Piersawl	Assistant Secretary
Wyoming, Ohio	
Mrs. Naomi Wilson	Treasurer
Washingtonville, N. Y.	
Cynthia Mae Hayden	Reporter
Lebanon, Tenn.	
Loretta Miller	Pianist
Dickson, Tenn.	
Mrs. Mable Saunders	Chorister
Nashville, Tenn.	
Mrs. Frances A. Sanders	Adviser

Debate Group



The Debating Team of Tennessee State College was organized by Prof. J. C. Ballard, April, 1939. The prime purpose of its organization was to train students to think and speak logically and extemporaneously.

Our debaters competed commendably against Morris Brown College of Atlanta, Georgia, April 4, on the current debating question of the year: "Resolved, That the Nations of the Western Hemisphere Should Form a Permanent Union." Speakers for the occasion were: Morris Brown (negative): Robert Brown, Sylvester Odom and Charles Bookert; Tennessee State College (affirmative): Raymond Chiles, Harry Scott and Jessie Miller.

Professor Ballard is proud of his battlers of wit, and has groomed them for the heavy inter-collegiate debate competition with Lane College at Jackson, Tenn., April 17; LeMoyne College at Memphis, Tenn., April 18; Arkansas State College at Pine Bluff, Ark., April 19; Stowe Teacher's College at St. Louis, Mo., April 24, and Lincoln University at Jefferson City, Mo., April 25.

Students who participate freely, and show interest in forensic procedures are awarded the coveted Forensic Gold Medal Key upon the date of graduation. During the student's senior year, he must actively participate in three inter-collegiate debates. Up to the present time there have been only four Keys awarded.

OFFICERS

Raymond Chiles	President
Billy Jones	Vice-President
Ruth O. Jones	Secretary
Helen Louise Glover	Assistant Secretary
Jamon Jackson	Treasurer
Granville Sawyer	Chaplain
Mae T. Barbee	Mascot
Prof. J. C. Ballard	Adviser

Forensic Society



The Forensic Society of Tennessee State College was inaugurated on A. and I. State College campus on April 3, 1939 by its organizer Prof. J. C. Ballard. The prime purpose of the organization is to train students in thinking and speaking logically and extemporaneously on contemporary problems.

The Open Student Forum of Tennessee A. and I. State College made its inaugural appearance on the campus December 3, 1939. It came into being through the tireless efforts of Professor J. C. Ballard. It was his purpose to form an organization whereby students might be given a chance to think aloud.

With Raymond Chiles, President and Forum Chairman; Helen Glover, Corresponding Secretary; Billy Jones, Publicity Director; Ruth Thomas, Secretary; James Jackson, Treasurer; and Prof. Ballard, Adviser; there was instituted for the first time in the history of the organization a new procedure in Forensic discussion—a Forensic Debate. The initial step in this procedure was held December 15, 1940, on the topic: "Resolved That the Romantic Conception of Marriage Should Not Be Emphasized." The participants were: (negative), Misses Carrie Dunmore and Lillie Mae Bland; (affirmative), Ellis Woods and Waldorf Johnson. By popular vote the negative won. The general conclusion was, that although the female sex may marry to perpetuate economic security, yet romance, love and admiration are the vital forces which promote harmony in family relations.

On January 10, 1941, the second in the series of Forensic Debates was held on the topic: "Resolved That the Education of the Negro Should Be Industrial Rather Than Liberal." Speakers for the occasion were: (negative), Miss Davella Battle and Mr. Harry Scott; (affirmative), Mr. Roscoe Hamby and Mr. Daniel Taylor. By popular vote the negative won. The general conclusion was, that the Negro's total economic development did not solely depend upon the ballot, but upon his preparation along some line which is vitally essential to our democratic way of life so that economic power may be secured, political power obtained, and in turn social justice demanded.

The organization is planning more programs for the current year of 1941-42.

History Study Club



Row one—Reading left to right: Alvin Hountree, Treasurer, Senior, East Saint Louis, Illinois; Professor Merl R. Eppse, Adviser, Chairman of the Social Science Division; Rushton Miller, President, Senior, Birmingham, Alabama; Ruth O. Thomas, Secretary, Senior, Chicago, Illinois.

Row two—Reading left to right: Joe Eppse, Assistant Business Manager, Senior, Covington, Tennessee; Billy Jones, Business Manager, Senior, East Saint Louis, Illinois; Arthur Hill, Vice-President, Junior, Murfreesboro, Tennessee; Anita Smith, ("Miss History Study Club") 1940-41, Junior, Nashville, Tennessee.

Co-Advisers: Professor Fred I. D. McKinney, Professor J. C. Ballard, Professor J. C. James, Professor Robert L. Williams.

History Study Club



The History Study Club was founded and organized in 1929 by Professor Merl R. Eppse, with "Service, Scholarship and Socialization" as the standards set forth.

Each year the club sponsors an Annual Scholarship Dance. The 1940-41 event featured Louis Armstrong and his world-famous orchestra. At commencement time, those Majors who have distinguished themselves in the college receive the benefits of this affair.

Motto: "We Cover the Earth Like the Dew"

Colors: Blue and White

Membership: 867

Home Economics Club



HOME ECONOMICS CLUB

OFFICERS

G. Lucylle Murphy	President	Argatha Baugh	Treasurer
Harriett Ray	Vice-President	Ethel L. Banks	Business Manager
Ruth D. Bond	Secretary	Myrtle Banks	Chaplain
Geneva Madison	Assistant Secretary	Georgia Pillow	Reporter

ADVISERS: Mrs. C. H. Springer, Miss Catherine V. Bradford, Miss Mabel E. Evans.

COLORS: Pink, Green, Silver.

FLOWER: "American Beauty Rose."

MOTTO: "Take What You Have and Make the Most of It."

Members of the Senior Class in the Division of Home Economics and candidates for the B.S. Degree:

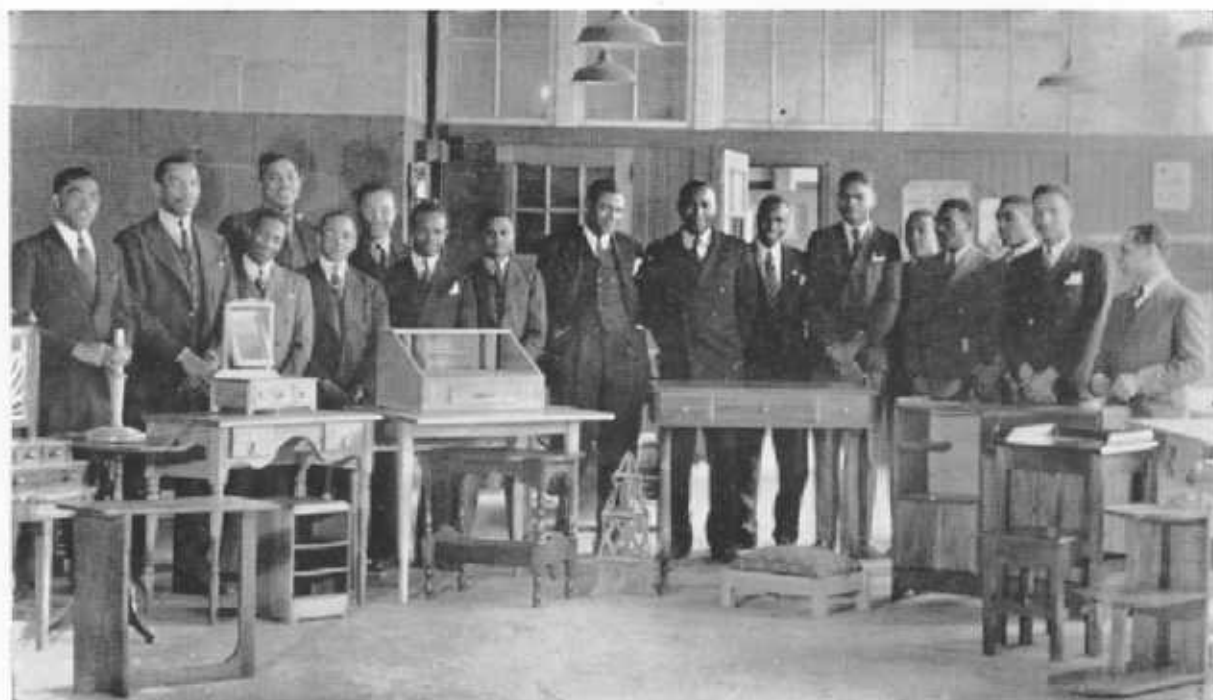
Minnie G. Armour	Ernestine Howse
Ethel L. Banks	Alice Hughes
Argatha Baugh	Dimple Johnson
Dorothy Beatty	Bell McLean
Ruth D. Bond	Geneva Morrow
Myrtle P. Bond	G. Lucylle Murphy
Anna D. Bransford	Pallen Nubia
Abigail Clarke	Ewania Patillo
Pearl Coleman	Georgia Pillow
Carolyn Edwards	Katherine Rogers
Bertha Epps	Elizabeth Shaw
Bessie I. Finley	Ida M. Stockard
Hattie Fitzpatrick	Claudia Taylor
Ruth Gary	Inez Taylor
Emma Hines	Arena M. Tillage

The main objective of the Home Economics Club is to help students to develop and become more efficient in foods, clothing, home beautification and management.

Each quarter a "Preview of Fashions," which is composed of the Junior and Senior college divisions is sponsored. Prizes are awarded to students whom the student body judges to be the most stunningly dressed. Miss Ruth Gary of the Senior Division has been awarded first prize for two consecutive quarters, and Miss Bessie Finley, second prize. Each division awards its own prize.

Exhibits of food are also displayed, and various dinners and banquets are supervised and executed by the Section of Foods and Nutrition.

Industrial Education Club



"By the way of the shop, the field and the skilled hand."

ROSTER

Anderson, W. H.
Booth, Thomas R.
Brady, Malcius M.
Burdine, William D.
Carter, Leon J.
Curley, Samuel W.
Crawford, L. E.
Dickerson, Earl
Kendrick, Fambro
Lash, Fred J.
Logan, Wesley R.
McKissack, Lemuel

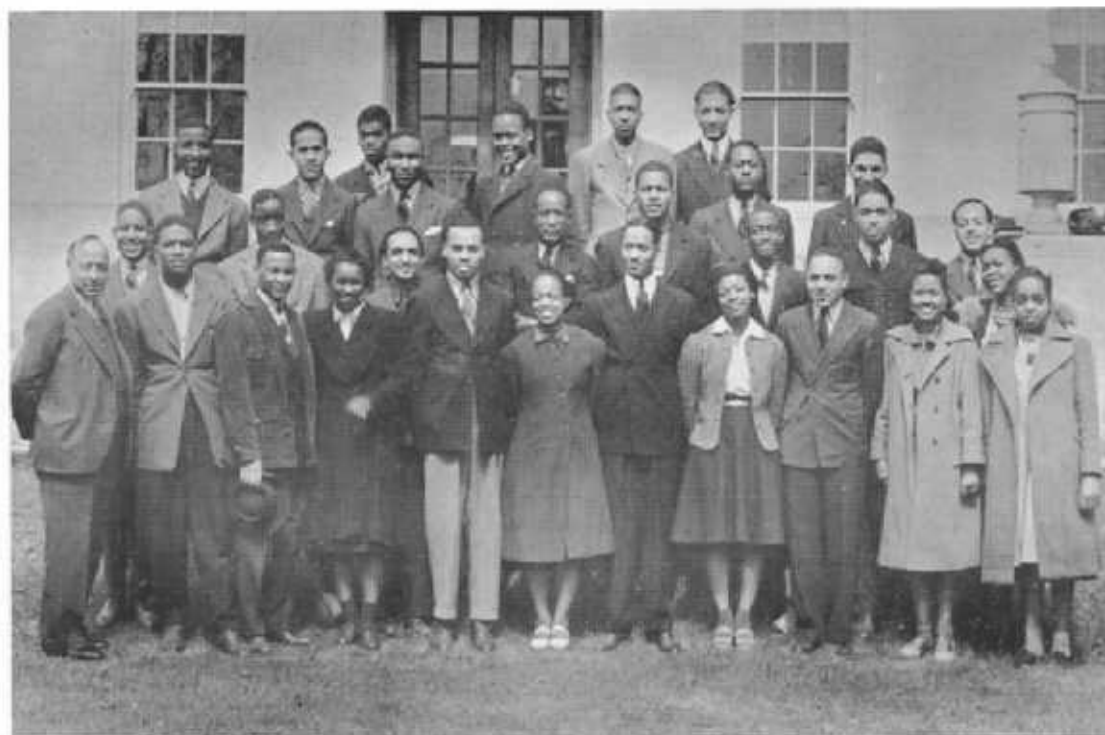
Merriwether, W. R.
Peden, Calvin
Sumrall, Fred A.
Reed, Daley
Ulmer, David
Williams, Thomas L.
Weatherford, John M.
West, Dorsey
Wilson, L. A.
Woodland, John C.
Wood, Herschel L.
Word, Samuel L.

OFFICERS

Davis, Mose J. President
Young, Horace W. Vice-President
Ellis, Atha P. Secretary-Treasurer
Smith, William H., Jr. Ch. Prog. Com.

FACULTY ADVISERS: Wade Wilson, Forrest Strange.

International Relations Club



A. and I. State College is honored to be recognized as a *bona fide* member of the International Relations Club. This organization has a membership of over one thousand students on college campuses in the United States and in foreign countries. These groups of students meet in many parts of the world for the objective study and discussion of international affairs.

The International Relations Club was organized at A. and I. State College, February 12, 1940, with Miss Gwyndolyn Claire Hale as its first president.

OFFICERS, 1940-41

Charles Farmer	President	Ruth O. Thomas	Assistant Secretary
Franklin, Tenn.		Chicago, Ill.	
Robert Williams	Vice-President	Robert Jordan	Treasurer
Nashville, Tenn.		Gary, Ind.	
Vivian Herndon	Secretary	Luther Webb	Reporter
Middletown, Ohio		Nashville, Tenn.	
Prof. Meri H. Eppse	Adviser		
Nashville, Tenn.			

MEMBERS

Anita Smith
 Jessie Perkins
 Mary E. Johnson
 Albert Umphrey
 Billy Jones
 Rushton Miller
 James Perkins, Jr.
 Clarence Johnson
 Richard Otey
 Irene Rucker
 Theodore Lawson
 Aaron Carter

Melvin Martin
 Herman Horne
 Earl Foster
 Charles Holly
 Alonzo Martin
 William Vaughn
 Lovell Jones
 Sidney Preston
 Raymond Chiles
 Joseph Green
 Gerald Greenfield

Mathematics Club



MATHEMATICS DEPARTMENT

Reading from left to right: Modestine V. Smith, Mary Alice Hall, Howard Sims, Georgia R. Buckner, Sammie Patton, Alberta J. Campbell, James Bryant, Mattie B. Pride, Martha R. Moore and Mr. A. V. Boswell.

The Mathematics Department has the distinction of being one of the oldest and most exacting departments in A. and I. State College, as well as in all colleges and universities.

Its members now feel they have a special privilege in studying under their able instructors, Mr. A. V. Boswell and Miss Matthew.

Its members hope to be able to show to society that through their study of mathematics that they are better citizens, and to those who are exposed to the "Eternal Verities" that they also may become better citizens. Their ambitions vary, but all intend to perpetuate mathematics in the world of tomorrow.

ETERNAL VERITIES

Truth will forever stand,
A guiding light for living man;
And "Math" itself will prove to you
That axioms here are always true.

So take it, and we're sure that you
Will find that it will help you too
To be exact, upright, and fine
For "Eternal Verities" are divine.

Physical Education Club



OFFICERS

William C. Thomas	... President
Roanoke, Virginia	
Andrew Lewis	... Vice-President
Milwaukee, Wisconsin	
Marie Baxter	... Secretary
Cincinnati, Ohio	
Thelma Charles	... Treasurer
Cincinnati, Ohio	
Gladys Shockley	... Chaplain
Kansas City, Missouri	
William Broadnax	... Sergeant-at-Arms
Memphis, Tennessee	
Benjamin Mallard	... Journalist
Detroit, Michigan	
Chauncey Brewster	... Corresponding Secretary
New York, New York	

ADVISERS: Floyd C. Mourning, Dorothy Garland, Willette Kilpatrick, Lester Lennon.

The Physical Education club is the outgrowth of the Physical Education Department. Its beginning dates back to 1935, when it was organized as the Physical Culture Club.

The members of this club are majors in the field of Health and Physical Education. The club functions in cooperation with the Physical Education Department, and aims to formulate a program that will meet the needs of all students at A. and I. State College. It takes part in the intramural program, and is the governing body for rules and regulations pertaining to intramural activities.

The club boasts of approximately thirty-five members who have worked diligently during 1940-41 to make the club a success.

We dedicate ourselves to the betterment of A. and I. State College both physically and mentally.

Romantic Linguistics



Romantic Linguistics

Departmental Club of the Romance Language Seminar

LES FONCTIONNAIRES

Marie Elaine Baxter	Le President	Marie Grant	L'Assistante
Carlton Sparks	Le Vice-President	Gus Rutledge	Le Caispelain
Dave Ella Battle	Le Secretaire	Charles Goodman	L'Agent de Publicite
Gerald Greenfield	Le Tresorier	Rushton Miller	L'Assistant Agt. de Publicite
Hugh Blackwell	Le Pianiste	Prof. Ruth Gwendolyn Smith	La Sponseur

LES MEMBERS

Alexander, Alice	Flemings, Anita	Kendricks, Frances	Robinson, Anthony
Allen, Mildred	Flemings, Helen	King, Archie	Rodgers, Arthur
Allen, Vera	Fontenette, Mary	Lawrence, Hannah	Rogers, Robbie
Armour, Minnie	Foster, Collins	Leavella, Laura	Ross, Mary
Arnutt, James	Frazier, Ora	Leggett, Earl	Roundtree, Alvin
Arnold, Dorothy	Gipson, Early	Lewis, Lorene	Rucker, Gladys
Baker, Myrtle	Glover, Fay	Little, Leola	Russell, William
Ballard, Althea	Goodman, Charles	Lizsamore, Ray	Rutledge, Gus
Barbee, Martha	Gordon, Hiram	Lockridge, Sarah	Scott, Duncan
Barnes, Anastasia	Graham, Willie	Lozan, Wesley	Scott, Mary
Boas, Willie	Grant, Marie	Lowe, Ruth	Sharpe, Justine
Battle, Dave	Greenfield, Gerald	Lyle, Elliot	Shorter, Ann
Battle, Emma	Gregory, John	Madry, Janie	Shorter, Josie
Battle, Felix	Griffin, Georgia	Mallard, Benjamin	Slaughter, John
Baxter, Marie	Hale, Essie	Martin, Alonzo	Sledge, Helen
Beavers, Tempie	Hale, Mattie	Martin, Theodore	Smith, Hattie
Blackwell, Hugh M.	Hambrick, Edward	Maryland, Catherine	Smith, Marie
Boyd, Theophilus	Hamlar, Ethelyne	McCord, Jerry	Sparks, Carlton
Bowers, William	Hardy, Mary	McGuire, Mary	Strong, Arthur
Broxton, Fred	Harvey, Clara	McLean, Belle	Starks, Gladys
Bullard, Lily	Hatcher, Olga	McMillan, James	Streeter, Cecelia
Burgess, Gladys	Heading, Henry	Miller, Loretta	Sudberry, Melvin
Burley, Dan	Hennings, Wilma	Miller, Rushton	Swayze, James
Burton, Arlyn	Henry, Rowena	Mills, Latham	Taylor, Daniel
Butler, John	Hewlett, Audrey	Mitchell, Forest	Thomas, Dorothy
Calvert, Alice	Hicks, Charleta	Mitchell, Julia	Thomas, W. C.
Campbell, Alberta	Hodges, Evelyn	Moppins, Jesse	Thompson, Leonard
Castleberry, Ida	Holmes, Benjamin	Moss, Mary	Thompson, John
Chambliss, Clarice	Hooks, Otis	Mullins, Leona	Timberlake, Frances
Chapman, Leola	House, Gladys	Neal, Menola	Townsend, Carmen
Childs, Clifford	Howard, Helen	Officer, Donald	Tucker, Knox
Clark, Jesse	Howard, Theodore	Officer, George	Turner, Dorothy
Clark, Lyren	Hughes, Melvina	Otey, Richard	Turner, Henry
Corley, Charles	Inman, Mahlon	Parker, Bertha	Turner, T. Besexter
Cotton, Romulus	Jackson, Albert	Patton, Sammie	Turner, William
Cox, Helen	Jackson, Lawrence	Payne, Reuben	Walton, Thelma
Davis, Frances	James, Alex	Pescocock, Ophelia	Walton, Norman
Davidson, Cecil	Johnson, Ada	Phillips, Guy	Watson, Evelyn
Dixon, Brice	Johnson, Edward	Phillips, Nancy	Weaver, John
Dixon, Doris	Johnson, Eunice	Polk, Ella	West, Gladys
Douglas, Marie	Johnson, Mary	Powell, Ada	White, James
Duncan, Gladys	Johnson, Mattie	Prince, Robin	Whitmore, Dorothy
Durham, Ruth	Johnson, Thelma	Rajcoomar, George	Williams, Thomas
Edington, Annie	Johnson, Russell	Reed, George	Wilson, Calvin
Edmondson, Mary	Johnson, Waldorf	Reynolds, Ella	Wilson, Rita
Eliot, Aurealia	Jones, James	Rhodes, Edward	Woodland, John
Elston, Carl	Jones, Roland	Rhorne, Frank	Woods, Geraldine
Farmer, Charles	Joyner, Willa	Rice, Leroy	Wren, Helen
Fesgin, Doris	Kelsey, Theodore	Richards, Emma	Young, Annie

Tennessee State Players Guild



The Little Theatre Movement is promoted through the Department of Speech. The Tennessee State Players Guild is the dramatic workshop for all students who desire to participate in dramatic and speech activities. The purposes of the organization are: first, to stimulate a greater interest in the drama; second, to develop Negro folk drama; third, to develop Negro actors, playwrights, scenic designers and directors; and fourth, to present anything from the Greek drama to the plays of Clifford Odets.

EXECUTIVE STAFF

President	Ira E. Evans, Jr.
Vice-President	Edward H. Hale
Secretary	Helen Seoney
Assistant Secretary	Ruth Thomas
Treasurer	Helene Andersen
Business Manager	Billy Jones
Financial Secretary ..	R. B. J. Campbell, Jr.
Ticket Agent	Leonard Thompson
Publicity	Earl Bass
	Mae T. Barboe, Granville Sawyer

PRODUCTION STAFF

Thomas E. Poag	Director
Laura M. Averette	Director
Benton A. Adams	Asso. Technical Director
Charles Hunter	Student Tech. Director
William Mayes	Student Tech. Director
Leon Carter	Stage Manager
Ewania Patillo	Make-up Artist
Geneva Morrow	Costume Designer
Leonard Thompson	Property Manager
Robert Gibson	Electrician

Activities of Tennessee State Player's Guild



Concert Singers



Concert Singers

For more than ten years the Concert Singers under the direction of Mrs. Marie Brooks-Strange have carried their songs of goodwill throughout the State of Tennessee, as well as into other states of the Union. It is by means of their fine contacts that State College has made new and lasting friends. In 1932 and 1933, they sang at the Chicago World's Fair, while thousands listened with enthusiasm. When Kagawa, the great Chinese educator, spoke to a packed house in Memphis some four years ago, these singers brought thunderous applause. St. Louis presented them in the large opera house during the meeting of the National Education Association in 1936. They appeared on the Tennessee Day program at the New York World's Fair, 1939, at which time they were broadcast over a nation-wide hook-up, and again by return invitation in 1940. The singers again appeared in St. Louis, in February, 1940, at the meeting of the National Education Association, where in the Gold Room of the Jefferson Hotel they rendered a program for the American Association of Teachers Colleges. In June, 1940, the singers made a triumphal tour through the Midwest which included engagements in Minneapolis, Minnesota at the National Convention of the Kiwanis Clubs, in Chicago at the University of Chicago and at other educational institutions in Illinois and Indiana.

Networks from coast to coast have picked up their Columbia Broadcasting programs. The group has had regular appearances on the program, "Song Time in Tennessee." On numerous occasions, individual artists, selected from the group, have been featured on the radio.

Tours throughout the State are annually scheduled by the singers, at which time they are invited to appear before college and university audiences. Concerts in the city of Nashville have included George Peabody College for Teachers, Vanderbilt University, Scarritt College, the Hermitage Hotel, the Andrew Jackson Hotel, Chamber of Commerce, and the meeting of the Governors of Southern States at the Governor's mansion.

The Concert Singers have sung to the President of the United States, Mr. Franklin D. Roosevelt, and to four governors of Tennessee: Governor Hill McAlister, Governor Gordon Browning, and the present Governor Prentice Cooper.

The group receives the hearty cooperation of the President of the College, Dr. W. J. Hale, who believes in developing the individual's special aptitude to the fullest of his capabilities.

Mrs. Marie Brooks-Strange, able director of the singers, gives untriflingly of her time and energy in order to inspire her chorus to still greater achievement. The following expression from one of the leading educators of America bespeaks the general enthusiastic attitude with which the group is received:

"Indeed, I cannot recall any program ever presented in this institution during the twenty years of my connection here which has ever called for so much enthusiastic response from the students and faculty as well. I was expecting a great deal from your group, but I must confess that you exceeded even my highest expectations. The work you are doing in music at A. and I. State College ranks easily now among the high achievements of the Negro race in the United States, and I most warmly congratulate you and all others who have any part in this fine record."

The following members of the group have distinguished themselves:
Forrest W. Strange, Silas Cephus Douglass, Gwyndolyn C. Hale, Lottie Springs-Smith, Alexander Carney, Louis C. Tolliver, William Gillespie, Inge Hardison, Modestine Young, Laura Edmonds-Clay, Olivia Lane Jones, Benton A. Adams, and Hilda McGill-Taylor.

A & I Symbol of Mother's Day

Presented Annually by the Kentucky Club Since 1926



"Our Campus Mother"
MRS. JOYCE HODGKINS

The Kentucky Club was organized by Mrs. G. W. Gore, Jr., in the fall of 1926, for the purpose of creating enthusiasm among the students from the Blue Grass State for service, scholarship and high ideals.

The Club is best known, perhaps, for its Annual Mother's Day program with Mrs. Joyce Hodgkins as a living symbol. The following song which is dedicated to Mrs. Hodgkins best expresses the high esteem with which she is held by all:

G is for her GENEROUS disposition
R the REVERENCE with which she's held by all
A her ARMS of love and strong devotion
N the friendly NEIGHBOR we may call
N is for her gentle NOBLE NATURE
Y her YEARS of altruistic love
Put them all together they spell G-R-A-N-N-Y
Our Godsent blessing from above.

—P.W.G

Tune: M-o-t-h-e-r

The College Cafeteria

HIGHLIGHTS IN SEASON'S ACTIVITIES



The College Cafeteria

The College Cafeteria holds a unique place in the program of school affairs. It is one of the many places on the campus that stands for efficiency, and courteous service.

The reputation of successful management may be attributed to many causes. For approximately twenty years, Mrs. Janie Stanback Elliott has devoted her unselfish service to the cause of making "meal time" a "happy time." Foods of the best quality are prepared by student help under the direct supervision of Mrs. Elliott. Neat, clean and interested young men and women forming the "Personality Group" under the direction of the Department of Business Education, are responsible for the service and checking. The food is both attractive and wholesome as special care is given not only to how it looks, but to the nutritive value to be received.

Mrs. Elliott is assisted in this work by Mr. Louis Tolliver, assistant manager, and Miss Mabel Evans, instructor in institutional cooking. Chief among the student assistants are Mr. Donald K. Bentley in charge of food preparation; Mr. James E. Farrell, assistant; and Mr. Clarence Johnson, in charge of the wholesale department and building.

Practically the entire first floor of the Women's building is devoted to the cafeteria. The Building contains a separate dining room for faculty members, a main dining room, kitchen, dish washing room, dressing rooms, cloak room and other departments.

The cafeteria has not only served the students and faculty, but it has extended its service to personalities of national and international character. The legislature meets biennially in Nashville at which time it is the privilege of the college to entertain them at a luncheon in their honor. Various organizations including the New Farmers of America, the YWCA, the Tennessee Negro Education, National Conference of State Supervisors and Teacher Trainers in Agriculture and Home Economics, Meeting of Deans and Registrars, National meetings of Fraternities and Sororities, Ministers Alliance and others have held elaborate banquets in the college cafeteria. Visitors from all sections of the country have shared in the hospitality the cafeteria offers.

The College Cafeteria

PERSONNEL



Business Education Department



Business Education Department

ALPHA THETA OMEGA FRATERNITY

DEPARTMENT OF BUSINESS EDUCATION

The progress of the Negro in the future will be largely determined by how effectively he can adjust his economic situation. The Negro has made an enviable place for himself in the fields of Music, Art and Drama. But this recognition only applies to a very few very talented persons. Any strides in progress for the masses must be made along economic lines.

First, all Negroes must recognize the significance of dependability, punctuality, trustworthiness, truthfulness, honesty and efficiency, as well as a wholesome attitude toward all types of work and their fellowmen. Hence, there should be offered some courses in Business for all Negro College Students, with an emphasis on the socio-economic phases of life. A small group should be encouraged to pursue courses qualifying them to be efficient office assistants, thus promoting business among our people. Then, a very limited number should seek to be leaders in Business, creating positions for other Negroes, by opening businesses suitable for different communities. But those venturing into this field should realize that a bachelor's or graduate degree is only the beginning, as sanity of thought and actions, wisdom, industry, common sense and courtesy must go hand in hand with knowledge.

To this end has the Department of Business Education been organized: to mainly train office assistants, and to encourage for further training the few, who seem to possess the necessary executive qualities.

Because of a sane program of attempting what could be well performed and achieved, this department has received national recognition for the training of efficient secretaries and teachers of commercial subjects. As evidence of same, a large percentage of the secretaries in business houses, insurance companies, colleges and universities are our graduates. All of the teachers of commercial subjects in Tennessee, a large number throughout the South, and several in the cities of Washington and New York in the city systems are our graduates. The United States Government has been attracted by the excellence of the work of this department, as its representatives extend special invitation to our graduates to take Civil Service Examinations. Many pass with high honors and receive worthwhile positions in Washington, Tuskegee Veterans Bureau Hospital, as well as in other places.

Alpha Theta Omega Fraternity was organized by three seniors of 1939, Mr. Wm. Hafford and Misses D. Bruce and S. Harris, as they were given an opportunity to execute and formulate their own plans, to appreciate the value of good business ethics, to develop high standards of scholarship, as well as encouraged to study new developments of business. The purpose of the organization is to promote interest in the business world, to stimulate interest in daily class work, and to develop good business techniques. These pictures represent the members at work in the different departments of Business.

Tennessee Collegians



COLLEGE ORCHESTRA

THE TENNESSEE STATE COLLEGIANS

Increasingly, the Tennessee State Collegians are becoming the most popular dance band of this section, and are playing engagements not only in Nashville and Tennessee, but also in Illinois, Kentucky, Arkansas, Louisiana, Mississippi and Alabama. Exceptionally successful engagements include the following: The Illinois State Teachers' Ball, played in Carbondale, Illinois; the Intra-County Medical Association Dance, played at the Armory of Jackson, Tennessee; and the Tennessee State Teachers' Association Annual Ball in Nashville, Tennessee.

The orchestra, resplendent in full dress, thoroughly equipped with derbies, mutes and stands, and armed with a potent repertoire of sweet, swing, and hot musical compositions, is considered by many as the best all-around collegiate band in America.

The personnel of the Tennessee State Collegians is as follows:

Rushton Miller, Manager and Director. Trumpet. Member of Omega Psi Phi Fraternity. Birmingham, Alabama.

Billy Jones, Secretary and Treasurer. Percussions. Member of Alpha Phi Alpha Fraternity. East St. Louis, Illinois.

Donald Officer, Featured Vocalist and First Trumpet. Member of Omega Psi Phi Fraternity. Sparta, Tennessee.

Junius Stevenson, Second Trumpet. Pine Bluff, Arkansas.

Herbert Holmes, Third Trumpet. Member of Omega Psi Phi Fraternity. Buffalo, New York.

Earl Turner, Fourth Trumpet. Vocalist, ad lib trumpeter. Dayton, Ohio.

Benjamin Holmes, First Alto Saxophone. Chicago, Illinois.

Paul Quinichette, Second Tenor Saxophone. Featured "hot" man of the orchestra. Sphinx Club. Denver, Colorado.

Theodore Lawson, Third Alto Saxophone. Member of Omega Psi Phi Fraternity. Birmingham, Alabama.

Perry Osborne, Fourth Tenor Saxophone. Springfield, Illinois.

Russell Weathers, Bass Fiddle. Featured Soloist. Member of Omega Psi Phi Fraternity. Memphis, Tennessee.

Walter C. Pinkston, Piano. Member of Omega Psi Phi Fraternity. New York, New York.

Robert Gibson, Technician and Tap Dancer. Member of the Sphinx Club. Clarksville, Tennessee.

Physical Education Department



SPECIAL GROUP ACTIVITIES



WOMEN'S BASKETBALL TEAM



MEN'S BASKETBALL TEAM

Physical Education Department



SPECIAL GROUP ACTIVITIES

"Miss Tennessee"



MISS TENNESSEE

Miss Kathryn Coleman, Memphis, Tennessee. Member of the Alpha Kappa Alpha Sorority; Delta Tau Iota Club; History Study Club; Junior Class; Home Economics Club.

Most Popular



IRENE BAKER

Irene Elizabeth Baker, Kalamazoo, Michigan. Sophomore. Member of Alpha Kappa Alpha Sorority; president, Delta Tau Iota Club; member, Fourth Estate; member of Student Council, History Study Club. Voted most popular girl on the campus. Favorite pastimes: hiking, swimming, bicycling, boating, dancing, reading, sewing, amateur photography.



RUNNER-UPS FOR "MISS POPULARITY"

Miss Grace Howard, Junior Class, Nashville, Tenn.

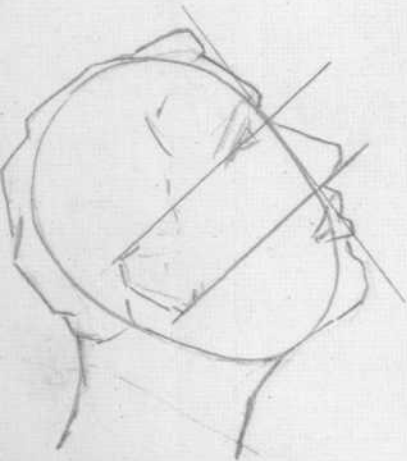
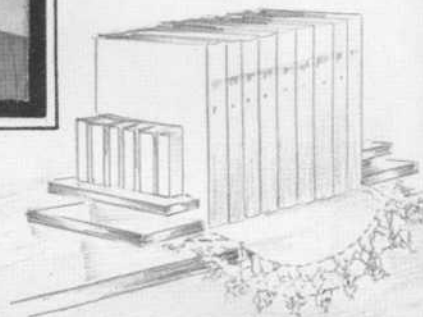
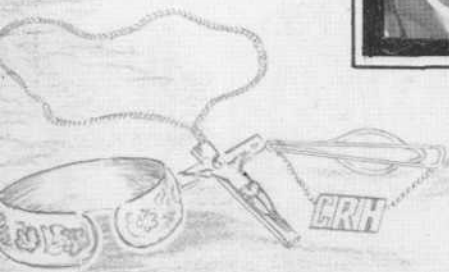
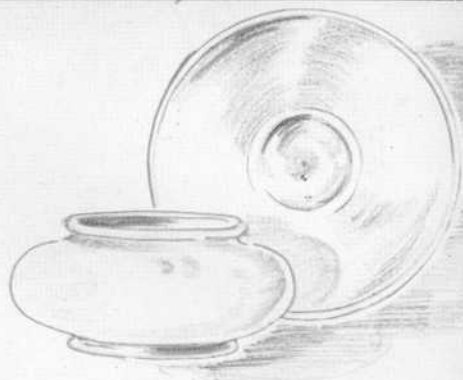
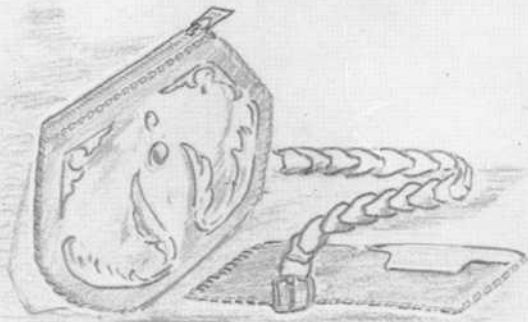
Miss Carrie Garrett, Freshman Class, Clarks-ville, Tenn.

Miss Grace Crenshaw, Freshman Class, Pulaski, Tenn.

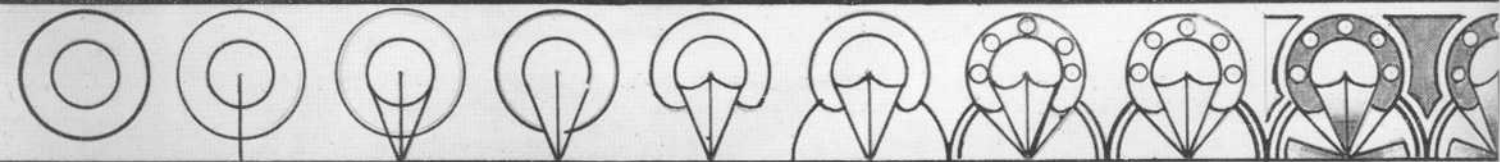
Miss Bessie Finley, Senior Class, Batesville, Ark.

Miss Eunice Bush, Freshman, Mobile, Alabama.

Miss Clarice Chambliss, Birmingham, Alabama.



THE DEPARTMENT OF ART



Photography Department



AYENI PHOTO DEPARTMENT

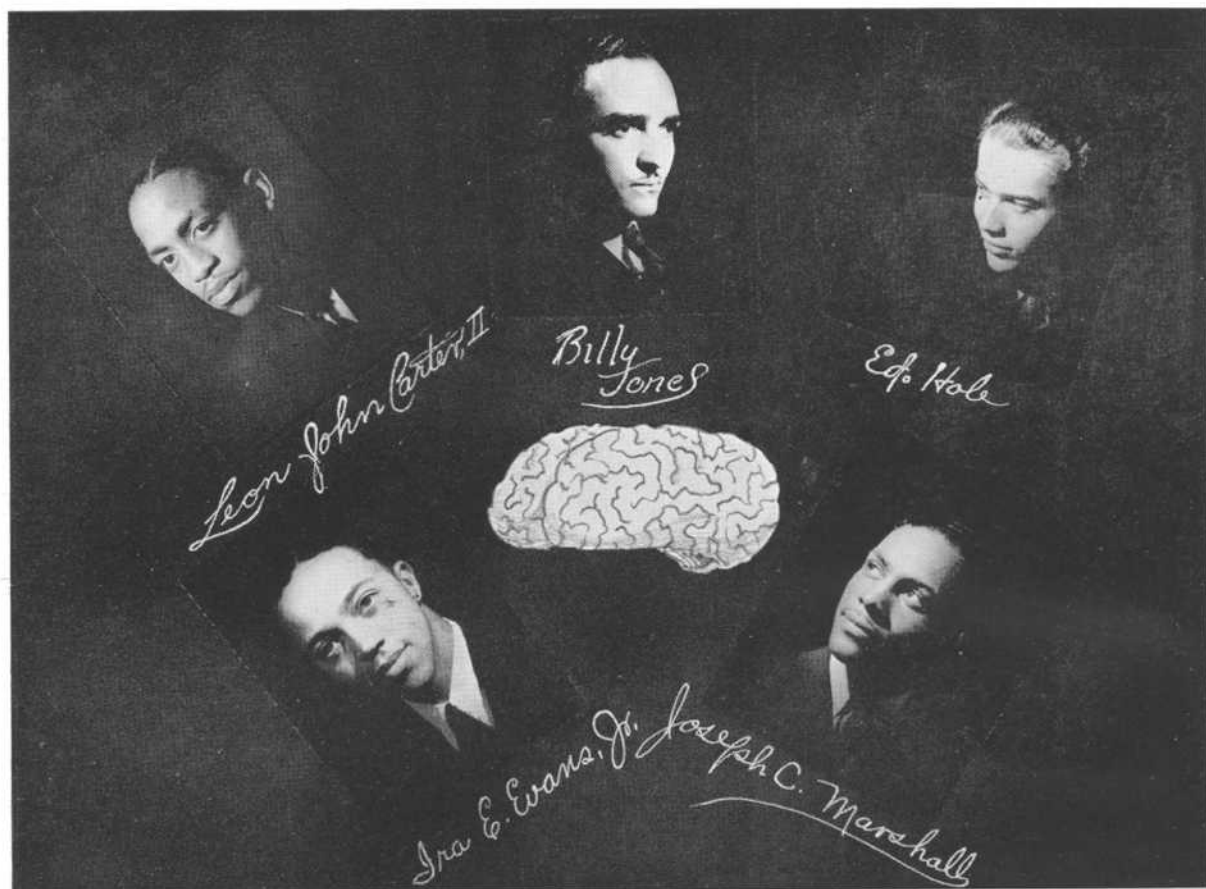
EDWARD H. HALE — CHARLES RAY HUNTER — ROBERT GIBSON, JR.

We Specialize in "Photographs" Not "Pictures"

Groups—Action Photos—Portraits—Photostatic Prints—Copying

MOVIES—SLIDES—RADIO AND SOUND EQUIPMENT

The Brain Trust



This organization is composed of five of the Leading Students (all seniors) of the College.

One must be the head of at least one organization on the campus to qualify for membership.

The Brain Trust roster includes some of the most powerful and leading male personalities of the college.

LEON CARTER, II, *President, Sunday School Senior Class.*

IRA E. EVANS, JR., *President, Tennessee State Players Guild.*

EDWARD H. HALE, *President, Class '41.*

BILLY JONES, *President, Delta Phi Delta, National Honorary Journalistic Society.*

JOSEPH MARSHALL, III, *Polemarch, Alpha Theta Chapter, Kappa Alpha Psi Fraternity.*

North Wing Research

North Wing Research Club



MEMBERSHIP PERSONNEL

Thomas G. Laster, President; Fred J. D. McKinney, Secretary-Treasurer; Josef C. James, Chairman of Program Committee; John C. Ballard, Alger V. Boswell, R. E. Clay, Merle R. Eppse, George W. Gore, Jr., W. J. Hale, Sr., Lester Lennon, Thomas E. Poag, D. A. Williston.

The time comes in the development of organized life for a story—sometimes a beautiful story—and sometimes one that is not so beautiful. The North Wing Research Club tells its story of discovery.

Sunday, the 20th day of February, Nineteen hundred and forty, five faculty men sat talking . . . Let us tune in . . . Economics—Higher Education—Insurance—War—and the World of tomorrow . . . After this kaleidoscopic treatment of international and domestic problems, the aforementioned club was founded.

The purpose of the organization is to stimulate discussion and research on problems of a general and professional nature.

N.F.A.



The New Farmers of America represent a progressive group of young men who are interested in "tilling the soil" and producing the finest type of marketable produce, in whatever community they find themselves.

The officers of the N.F.A. are as follows: James N. Lemons, president; Ned N. Neeley, vice-president; Aggie Anderson, 2nd vice-president; Fred Westbrooks, secretary; James H. Crosse, treasurer; Davis Owens, Chaplain; Joe B. Eppse, sergeant-at-arms; Edward Taylor, reporter; Daly Reed, parliamentarian.



SNAPSHOT CONTEST

Winners



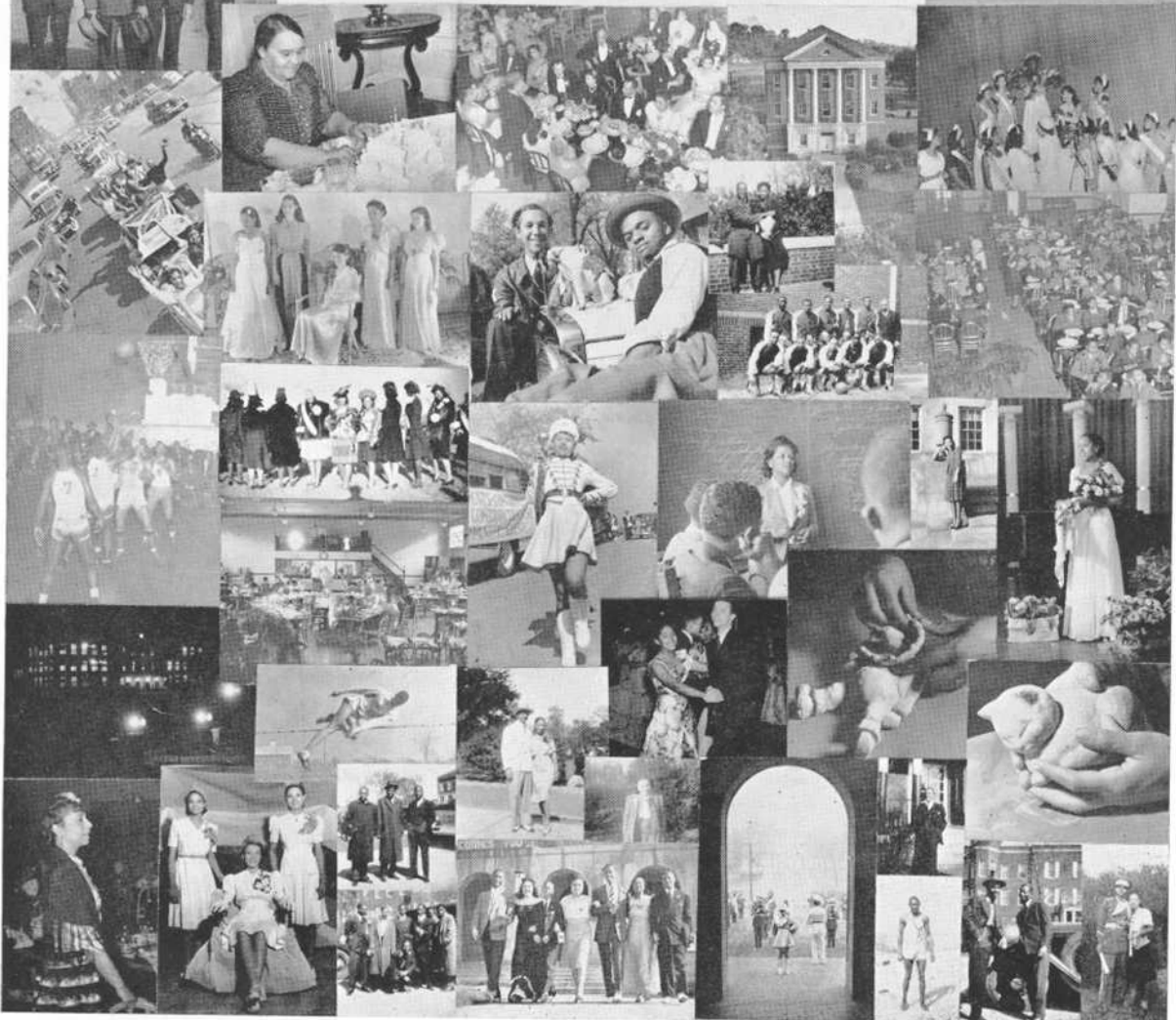
2nd Prize



1st PRIZE



3rd Prize





Administrative Staff



The Library



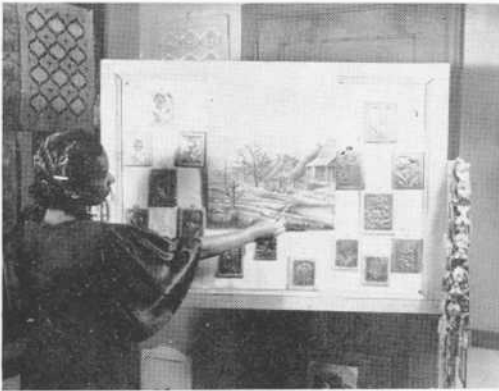
Physics Department



Biology



Fine Arts



Home Economics and Foods

