



1946
Tennessean



The

TENNESSEAN

1946

Published by the Students of
TENNESSEE AGRICULTURAL AND
INDUSTRIAL STATE COLLEGE
NASHVILLE, TENNESSEE

1946 YEARBOOK STAFF

MISS ALLURA FREEMAN	<i>Editor-in-Chief</i>
MISS SARAH SWONIAGAN	<i>Associate Editor</i>
MR. CHARLES SMITH	<i>Associate Editor</i>
MR. BENJAMIN SAULTERS	<i>Business Manager</i>
MR. THOMAS PINSON	<i>Assistant Business Manager</i>
MR. CHARLES COLEMAN	<i>Advertising Editor</i>
MR. GEORGE HARPER	<i>Assistant Advertising Editor</i>
MR. EARL WELLS	<i>Circulation Editor</i>
MR. ROY OVERTON	<i>Assistant Circulation Editor</i>
MR. THURMAN NORTHCROSS	<i>Fraternity Editor</i>
MISS HENRIETTA RUCKS	<i>Sorority Editor</i>
MRS. MARY BIDDIX BATEMAN	<i>Club Editor</i>
MR. CARLOS BRUCE	<i>Art Editor</i>
MISS THELMA L. BROWNE	<i>Assistant Art Editor</i>
MRS. MELBA T. BROWN	<i>Executive Secretary</i>
MISS LINNELL NUNN	<i>Assistant Secretary</i>

Contents . . .

ADMINISTRATION

THE DIVISIONS



The 1946 Yearbook staff works (above) and poses (below)

ATHLETICS FEATURES ORGANIZATIONS



MARTHA M. BROWN
Librarian

Mrs. Martha M. Brown, librarian, has been a member of the faculty since 1912. She is one of the two original members of the staff on the present faculty. Reminiscently Mrs. Brown tells of having served in some capacity in practically every department of the college—director of home economics, director of vocal music and the choir, matron of both men and women, school nurse, cafeteria manager, and librarian, as well as in other capacities.

She has served as treasurer of the State Teachers Association for eighteen years and has traveled throughout the state addressing groups of all ages on professional and social subjects. She is a member of Sigma Gamma Rho Sorority.

In the role of Dorothy Dix, Mrs. Brown counsels young men and women in the many complex problems of life. One should strive for nothing short of perfection in whatever he does, is the standard set by Mrs. Brown.



Mr. R. E. Clay, State Building Developer of Negro Education, has been connected with the college through the State Department of Education since 1918. In his former capacity as State Rosenwald Agent, and in his present position, Mr. Clay has been the principal figure in the race in building and remodeling elementary and high schools in many of the counties in the state. His ability to foster interracial good will has proved of inestimable value to education in the South.

True to the character of a good schoolman, Mr. Clay's interests move over the whole range of human affairs. He has organized and for some years conducted the Tennessee State College Sunday School which affords opportunity to enrich life through religion. He has a passionate belief in the capabilities of young people and with this faith he has built lasting friendships. He has assisted with programs at the college and on the field that foster better community life. He is executive secretary of the Better Homes Movement in Tennessee, founder of the Tennessee Interracial Movement, and general organizer of the Negro Business League. He is a member of the Omega Psi Phi Fraternity.

D E D I C

In the historical development of Tennessee State College there are those who have faithfully rendered service over a long period of time. Some of them have witnessed its evolution from the beginning to the present time.

With characteristic courage and integrity they have stood the storm when skies were not always fair; with zest they have entered into the joys and fortunes of the institution. Unreservedly and unstintingly they have given of their strength, effort, wisdom, knowledge, judgment, and foresight to the thousands who have come their way.

Qualities such as are found in these noble



R. E. CLAY
State Building Developer of Negro Education

A T T E N

persons, whom Tennessee State College is privileged to have on its faculty, do not go unnoticed. They are the indispensable attributes that build and maintain an institution.

Well may others emulate their virtues as they challenge us to assume the responsibilities and fulfill the task of building a greater Tennessee State College as visualized by President Davis.

To those who have charted the way and who are continuing in the upward and onward march of Tennessee State to even greater heights, we do respectfully dedicate this volume.



JANIE E. ELLIOTT
Cafeteria Consultant



W. S. ELLINGTON, D.D.
College Chaplain

Reverend W. S. Ellington, college chaplain, has served the college in this capacity since 1912. In addition to conducting the devotional period during the chapel hour, Dr. Ellington, according to tradition, delivers the first third Sunday sermon in the series of college church services conducted the third Sunday of each month. He has prominently participated in practically every program of city-wide interest held at the college including opening convocations, commencement exercises, special occasions honoring leading local, state, and national figures, anniversary programs celebrating the Thanksgiving, Christmas, and Easter seasons, as well as in other programs.

Characteristic of the efficient service rendered by Rev. Ellington is the prompt and reliable execution of his mission. Reserved and retiring in manner, serious in thought and sober in judgment are the distinctive traits of Rev. Ellington.

There is no dereliction of duty at the college because of his professional obligation as minister of the First Baptist Church of East Nashville. As the famed orator of "The Prodigal Son," delivered to a capacity Nashville audience for the past fifty-two years, he is no less the character who has unobtrusively influenced the lives of countless numbers of young men and women who have attended Tennessee State College.



Mrs. J. E. Elliott, cafeteria consultant, has been a member of the faculty since 1922. Her reputation in connection with cafeteria management and supervision has extended beyond the State of Tennessee. On many occasions, by request, Mrs. Elliott has organized school cafeterias in other states. Foods of quality served in an unrivaled style are guaranteed at the hands of Mrs. Elliott.

Her services are not limited to her special talent of food preparation, service, and management, but it is not uncommon to hear young men and women from over the state commend Mrs. Elliott for her help and cooperation in their effort to obtain an education. Her affableness makes her a person commonly sought for counsel and advice when needed by the individual student or by groups of students. For many years Mrs. Elliott has been affectionately called "The Kappa Sweetheart."

THE PRESIDENT'S MESSAGE

*In the land of golden sunshine,
By the Cumberland's fertile shore,
Stands a school for greatest service;
One that we adore.
Alma Mater, how we love thee!
Love thy white and blue.
May we strive to meet thy mandates
With faith that's true.*

There is that indefinable something called "college spirit" that exists in a more or less degree in all our institutions. It may be recognized by the intangible qualities of loyalty, honor, respect, love, admiration, and similar attributes. As incorporeal as it is, one is aware of its degree of presence and in proportion to its existence one is likely to respond to the condition or situation.

It is this other side of the picture that builds a great institution, not the brick and mortar alone, and it is with this in mind that Tennessee State College endeavors to respond to both aspects of the individual's developmental training—knowledge which may satisfy the self-centered phase of the individual's life and social cooperation which may satisfy the farseeing phase of his life.

It is then my opinion that the love one has for his institution is the result of the service that the institution is or has been to him in realizing his educational, social, economic, and spiritual needs.

As you follow the activities of the students and faculty through the pages of the 1946 TENNESSEAN, may we more firmly tie the bonds of friendship, loyalty, love, and good will, and rededicate our services to the cause of making Tennessee State College a still greater force in the educational development of the state and nation.

To our noble sons and daughters at home and abroad, who have made and are making significant contributions to this end, I extend congratulations and look forward with pride and confidence to future achievements.



DR. WALTER STROTHER DAVIS

President, Tennessee Agricultural and Industrial State College, B.S., Tennessee Agricultural and Industrial State College, 1931; M.S., Cornell University, 1933; Ph.D., Cornell University, 1941.

THE PRESIDENT—Teacher, Vocational Agriculture, Tennessee Agricultural and Industrial State College, January 1, 1931-1932; Director of the Department of Agriculture and Smith-Hughes Teacher Trainer in Agriculture, Tennessee Agricultural and Industrial State College, 1933-1943; State Adviser, New Farmers of America, 1933-1943; National Executive Secretary of the New Farmers of America, 1941-1943; Head Coach, Tennessee Agricultural and Industrial State College, 1933-1936; State Chairman of the War Bond Savings Clubs, Fifth War Loan Drive; Member of Agora Assembly, Omega Psi Phi Fraternity, Boy Scout Council, Elks Lodge, Deacon Board, First Baptist Church, Nashville, Tennessee.

ADMINISTRATIVE ASSISTANTS



RUBY HARPER, B.S.
*Secretary, Department of Health and
Physical Education*



ETHEL L. MOORE, B.S.
Clerk, Bursar's Office



ROBERT GAINES, B.S.
Cafeteria Manager



MARTHA MOORE, B.S.
Clerk, Secretary, Bursar's Office



LAVINIA DUMAS
Matron



MILDRED GAINES, B.S.
Cashier

ADMINISTRATIVE ASSISTANTS



LENA B. WATSON
Matron of Men's Dormitory



VERNA RANDALS
Adviser to Day Students



MARY R. HARDY, B.S.
Post Office



EDNA R. HANKAL, A.B.
Dean of Women



ROSE FAYE SANDERS, B.S.
Clerk, Registrar's Office



PEARL W. GORE, B.S.
Secretary and Post Office

ADMINISTRATIVE ASSISTANTS



HARRIETTE D. PLEASANT, B.S.
Secretary to President



EMMA P. JOHNSON, B.S.
Bursar



CARRIE B. LADLEY
Matron



JULIA M. ATKINS, B.S.
Clerk, Registrar's Office



RUTH D. MCALPIN, B.S.
Clerk, Registrar's Office



J. A. WELCH, B.S.
*Business Office
Supervisor, Physical Plant*



STUDENT PERSONNEL

VIRGINIA SIMMONS NYABONGO

Student Personnel Director

Associate Professor of Romance Languages

B.A., Bennett College; M.A., Ph.D., University of Wisconsin; Diplome d'Etudes Superieures de Phonetique, University of Grenoble, France.

HAZEL G. BLAINE

Secretary

B.S., Tennessee Agricultural and Industrial State College.

The Student Personnel Program aims to reach the interests, needs, and purposes of all students, to achieve the optimum in individual development. Practically, this means assisting the individual in adapting himself to new environments, orientation, understanding himself and his relation to people—roommates, classmates, friends, family; those within and without the immediate college community; in making choices that determine physical and mental health, leisure time activities, social, educational, and vocational adjustment.

Features of the Personnel Program include Freshman Week activities, Freshman Lectures, counseling of freshmen by faculty freshman counselors and student junior counselors, freshman teas, upperclass counseling by major departmental and divisional heads, distribution of materials such as the "Daily Schedule of Activities," "College Student Monthly Budget," "If I Were Beginning College Again," "How to Study," "How to Use the Library," "Dress," "Etiquette," "Choosing a Vocation," and "Guides for Guidance."

GRADUATE DIVISION



MAYFIELD N. AVERHART

Lexington, Mississippi

Agriculture

B.S., Alcorn College, Alcorn, Mississippi

MARGARET ROSE CAMPBELL

Nashville, Tennessee

Education

B.S., Tennessee State College; Lambda Eta Sigma

JAMES A. COOKE

Lexington, Tennessee

Education

B.S., Lane College, Jackson, Tennessee; Phi Beta Sigma

CARRIE MAE DENNEY

Nashville, Tennessee

Education

B.S., Tennessee State College

A. VEDESTER HILL

Nashville, Tennessee

Agriculture

B.S., Southern University, Scottsbluff, Louisiana; Phi Beta Sigma

LUCILLE PROTHROW LAWS

Nashville, Tennessee

Sociology

B.S., Tennessee State College; Alpha Kappa Mu

SHANNON LITTLE

Memphis, Tennessee

Physical Education

B.S., LeMoyne College, Memphis, Tennessee; B.S., Tennessee State College; Kappa Alpha Psi

ALAN LOTT

Douglas, Georgia

Science

B.S., Johnson C. Smith College, Charlotte, North Carolina; Phi Beta Sigma

ARIZONA M. OFFICER

Algood, Tennessee

Education

B.S., Tennessee State College; Alpha Kappa Mu

WILHELMINA PRINCE

Nashville, Tennessee

History

B.S., Tennessee State College; History Study Club

ROY LEE RICHARDSON

Cerulean, Kentucky

English

B.S., Tennessee State College; Gamma Iota Alpha

S. W. SCHOKELY

Nashville, Tennessee

Pre-Medicine

B.S., Tennessee State College

BESSIE SHUTE

Nashville, Tennessee

Home Economics

B.S., Tennessee State College

JAMES FRANK TAYLOR

Ripley, Tennessee

Agriculture

B.S., Tennessee State College

HENRY LEWIS TAYLOR

Nashville, Tennessee

Agriculture

B.S., Tennessee State College; Phi Beta Sigma

DIVISION OF AGRICULTURE

Faculty



W. S. DAVIS, Ph.D.
President of College



W. A. FLOWERS, M.S.
Director of Agriculture Division



D. A. WILLISTON, B.S.
Professor of Ornamental Horticulture



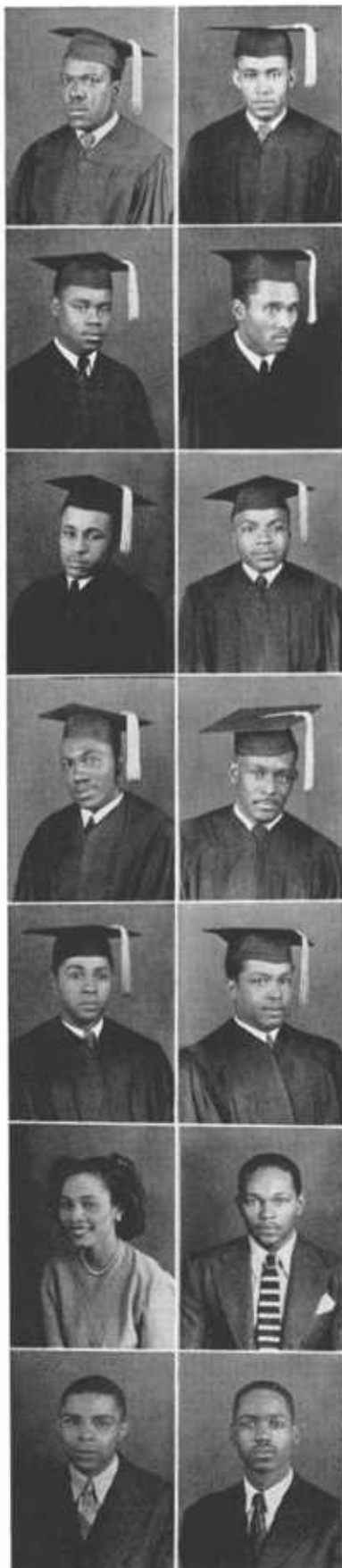
NEAL MCALPIN, M.S.
Assistant Professor of Horticulture



H. C. HARDY, B.S.
Farm Manager



ELEANOR ALLEN, B.S.
Secretary



Agriculture Seniors and Juniors

ALEXANDER BENNETT, JR.
Nashville, Tennessee

Senior

Agriculture

New Farmers of America; Veterans' Organization.

LLOYD M. DEBERRY
Jackson, Tennessee

Senior

Agriculture

Gamma Iota Alpha, Veterans' Organization;
New Farmers of America.

ALPHONDUS MILTON DOBBINS
Corsicana, Texas

Senior

Agriculture

Omega Psi Phi; New Farmers of America;
Student Christian Association; Tennessee
State Players Guild.

JOHN ARTHUR FLIPPIN
Gallatin, Tennessee

Senior

Agriculture

Zeta Alpha Chapter of Phi Beta Sigma Fraternity;
Secretary of New Farmers of America.

SAMUEL LEWIS HILLIARD
McKenzie, Tennessee

Senior

Agriculture

Alpha Phi Alpha Fraternity; Student Christian Association; New Farmers of America.

TOUSSAINT LOUNTURE JONES
Winston-Salem, North Carolina

Senior

Agriculture

New Farmers of America; Veterans' Organization.

EARNEST MITCHELL MARINS
Luxora, Arkansas

Senior

Agriculture

New Farmers of America; Student Christian Association.

EDWARD LEWIS MULLINS
Memphis, Tennessee

Senior

Agriculture

President of Alpha Phi Alpha Fraternity;
Secretary of New Farmers of America; Superintendent of Sunday School; Student Christian Association.

BEECHER C. SPARKMAN
Centerville, Tennessee

Senior

Agriculture

New Farmers of America; Gamma Iota Alpha, Veterans' Organization.

FRED E. WESTBROOK
Memphis, Tennessee

Senior

Agriculture

Gamma Iota Alpha; New Farmers of America; Student Christian Association.

EXZENE BYNUM
Muscle Shoals, Alabama

Junior

Agriculture

New Farmers of America.

DEWEY LOFTON WATKINS
Jackson, Tennessee

Junior

Agriculture

New Farmers of America; Phi Beta Sigma Fraternity.

JAMES W. WILLIAMSON
Jackson, Tennessee

Junior

Agriculture

New Farmers of America; Veterans' Organization; Phi Beta Sigma.

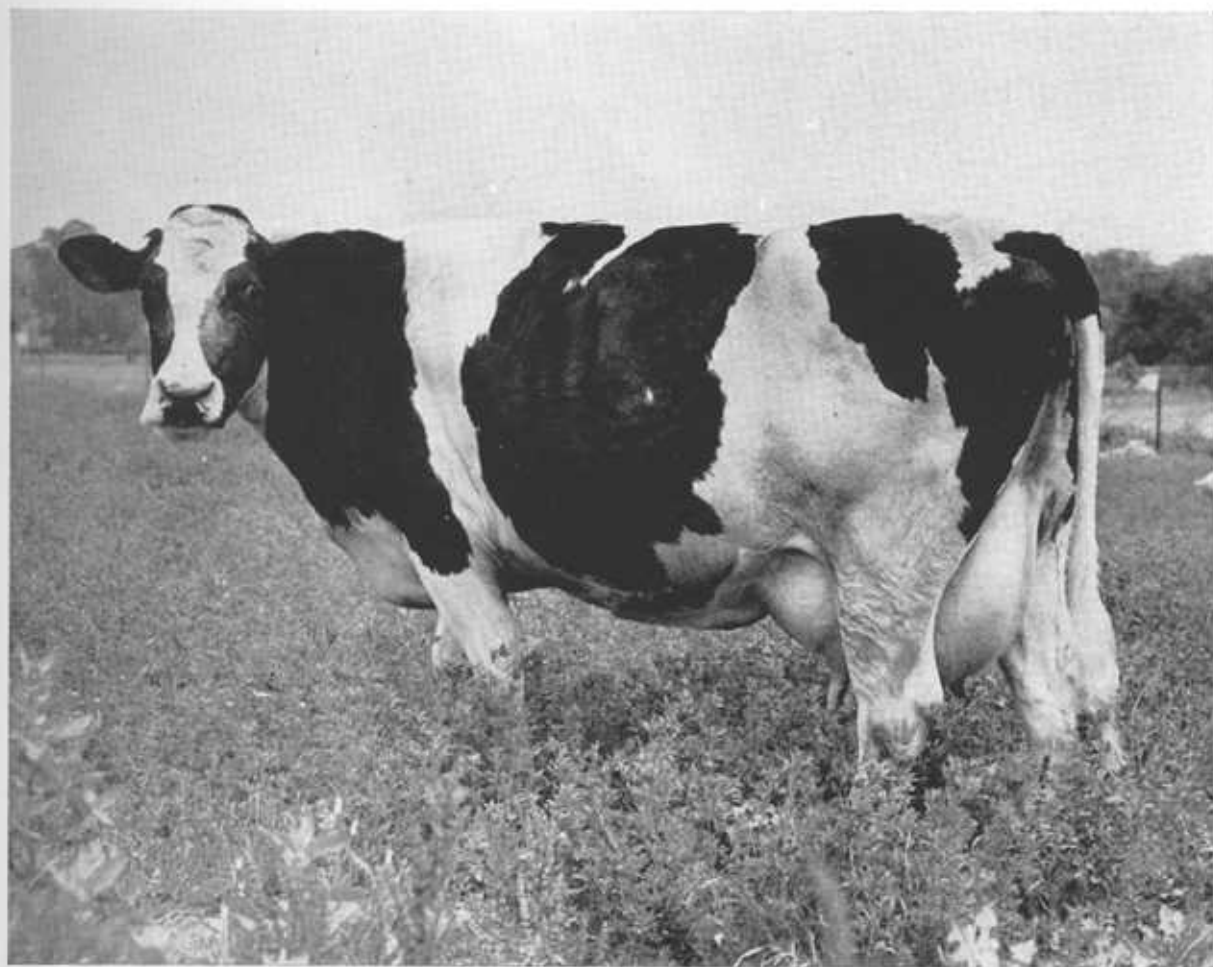
MOSES WOODS
Whiteville, Tennessee

Junior

Agriculture

Gamma Iota Alpha; New Farmers of America.

DIVISION OF AGRICULTURE



DIVISION OF AGRICULTURE

SCENES IN AGRICULTURE DEPARTMENT



DIVISION OF BUSINESS

Faculty



LEWIS R. HOLLAND, B.C.S., M.C.S.
Acting Director of Division of Business



MABEL M. SMYTHE, A.B., M.A., Ph.D.
Professor of Economics



CECILLE V. EVANS, B.S., M.A.
*Assistant Professor of Business
Education*



MARY P. JACKSON, B.S.
*Instructor in Multigraphing and
Office Machines*



MATTIE L. GORDAN, B.S.
Instructor in Business Administration

BUSINESS SENIORS

EMMA JOHNSON ARNETTE Newman, Georgia

Business Administration

Iota Phi Lambda; Future Business Leaders of America; Psychology Club; Student Christian Association.

LILLIAN LEWIS BARBOUR Nashville, Tennessee

Business Administration

Zeta Phi Beta Sorority; Student Council; Future Business Leaders of America.

MARY BIDDIX-BATEMAN Nashville, Tennessee

Business Education

Delta Sigma Theta Sorority; Future Business Leaders of America; Iota Phi Lambda; Ayeni Staff; Fourth Estate Club.

MELBA TOMS-BROWN Nashville, Tennessee

Zeta Phi Beta Sorority; Future Business Leaders of America; Iota Phi Lambda; Delta Phi Delta; Journalistic Fraternity; Concert Singers; College Choir; Treasure, Student Council; Executive Secretary, THE TENNESSEAN; Ayeni Staff; Student Christian Association; Baptist Student Union; English Club.

GLORIA PORTER-CRAWFORD Columbia, Tennessee

Business Education

Delta Sigma Theta Sorority; Ayeni Staff; Future Business Leaders of America.

LOIS VIVIAN CRAWFORD Jackson, Mississippi

Business Administration

Alpha Kappa Alpha Sorority; Future Business Leaders of America; Student Christian Association.

HAZEL GLORIA BLAINE Nashville, Tennessee

Business Education

Zeta Phi Beta Sorority; Future Business Leaders of America; College Choir; Student Christian Association.

DOROTHY LEE DAVIS Courtland, Alabama

Business Administration

Future Business Leaders of America.

STELLA DOTSON Nashville, Tennessee

Business Education

Future Business Leaders of America.

ALEAN EDWARDS Mobile, Alabama

Future Business Leaders of America.

MARGARET ANN EPPS Covington, Tennessee

Business Administration

Future Business Leaders of America.

MARY ELIZABETH EVANS Nashville, Tennessee

Business Education

Future Business Leaders of America; Ayeni Staff; THE TENNESSEAN.

JOHN T. FIELDS Helena, Arkansas

Business Education

Omega Psi Phi Fraternity; Future Business Leaders of America; Mathematics Club; Veterans' Club; Ensign, U. S. Naval Reserve.

WALTER GIBSON Chicago, Illinois

Business Education

Omega Psi Phi Fraternity; Future Business Leaders of America; Student Christian Association.

GEORGE JACKSON HARPER, JR. Milledgeville, Georgia

Business Administration

Omega Psi Phi Fraternity; Future Business Leaders of America; Business Manager of Senior Class; Delta Phi Delta Journalistic Fraternity; Student Christian Association; History Study Club; Better Dormitory Club.

EVELYN HENDRIX Nashville, Tennessee

Business Education

Future Business Leaders of America.

MYRTLE IRENE HOLLOWAY Chattanooga, Tennessee

Business Education

Iota Phi Lambda; Future Business Leaders of America; Ayeni Staff; THE TENNESSEAN.

IRMA IMOGENE HOWLETT Nashville, Tennessee

Business Education

Alpha Kappa Alpha Sorority; Future Business Leaders of America; Fourth Estate Club; Student Christian Association; English Club.

SARAH AMELETIA SWONIAGON McKenzie, Tennessee

Business Education

Alpha Kappa Alpha Sorority; Delta Phi Delta Journalistic Fraternity; Future Business Leaders of America; Ayeni Staff; THE TENNESSEAN; Student Christian Association; College Choir.

FRANCES LOUISE LEAVELLE Hopkinsville, Kentucky

Business Education

Alpha Kappa Alpha Sorority; Delta Phi Delta Journalistic Fraternity; Future Business Leaders of America; THE TENNESSEAN; Student Christian Association; College Choir.

MAE AUDREY LEAVEN Beaumont, Texas

Business Education

Alpha Kappa Alpha Sorority; Future Business Leaders of America; Student Christian Association; Quill Club; Lambda Eta Sigma Honorary Society; Future Teachers of America; Psychology Club; History Study Club.

WILMA A. MACK Mobile, Alabama

Business Education

Delta Sigma Theta Sorority; Future Business Leaders of America; History Study Club; Student Christian Association.

HELEN LOUISE GLOVER Chattanooga, Tennessee

Business Education

Future Business Leaders of America; Alpha Kappa Alpha Sorority.

HENRIETTA REBECCA E. RUCKS Nashville, Tennessee

Business Administration

Zeta Phi Beta Sorority; President of Delta Phi Delta Journalistic Fraternity; Future Business Leaders of America; Assistant Secretary, Concert Singers; Soloist, College Choir; Sorority Editor, THE TENNESSEAN; Baptist Student Union; Ayeni Staff; THE TENNESSEAN.

BUSINESS SENIORS AND JUNIORS

- BENJAMIN SAULTER, JR.** Cincinnati, Ohio
Business Administration
Alpha Phi Alpha Fraternity; Future Business Leaders of America; *Ayeni* Staff; Tennessee State Players Guild; President of Student Council; Student Christian Association; History Study Club; Better Dormitory Club.
- BARBARA JEAN WALKER** Memphis, Tennessee
Business Education
Future Business Leaders of America; Iota Phi Lambda Business Sorority; Psychology Club; Future Teachers of America; Sunday School.
- GLORIA ELOISE SMITH** South Bend, Indiana
Business Education
Alpha Kappa Alpha Sorority; Future Business Leaders of America; Los Buenos Vecinos; Delta Phi Delta Journalistic Fraternity.
- MIMMIE LUSK TALLEY** Rock Island, Tennessee
Business Education
Future Business Leaders of America.
- LAURAL PEARL TEASLEY** Nashville, Tennessee
Business Education
Zeta Phi Beta Sorority; Future Business Leaders of America; Fourth Estate Club; Student Christian Association; *Ayeni* Staff; THE TENNESSEAN; College Choir.
- ROSALIND BLONETTA THOMAS** Miami, Florida
Business Education
Zeta Phi Beta Sorority; *Ayeni* Staff; Future Business Leaders of America.
- WILLIE EDNA BARTON** Murfreesboro, Tennessee
Business Administration
Psychology Club; Library Science Club; Future Business Leaders of America.
- EVELYN BOYKIN** Chattanooga, Tennessee
Business Education
Iota Phi Lambda Business Sorority; Future Business Leaders of America.
- RUTH RAMSEY BRAYBOY** Nashville, Tennessee
Business Education
Ivy Leaf Club of Alpha Kappa Alpha Sorority; Psychology Club; College Choir.
- CATHERYNE MOODY** Trenton, Kentucky
Business Education
Alpha Kappa Alpha Sorority; Future Business Leaders of America.
- WILLIAM A. BURNETT, JR.** Milan, Tennessee
Business Administration
Gamma Iota Alpha; Future Business Leaders of America.
- GENEVA CLAYBOURNE** Shelbyville, Tennessee
Business Education
Future Business Leaders of America.
- IONA E. CRAWFORD** Nashville, Tennessee
Business Education
Future Business Leaders of America.
- EMMA LEE CROFT** Chattanooga, Tennessee
Business Education
Future Business Leaders of America; College Choir.
- OBEDIA CUNNINGHAM** Memphis, Tennessee
Business Education
Future Business Leaders of America; Tennessee State Players Guild.
- DORIS DOBBS** Montgomery, Alabama
Business Education
Future Business Leaders of America.
- MYRINE DICKERSON** Nashville, Tennessee
Business Education
Future Business Leaders of America.
- BENJAMIN EDWARDS** Nashville, Tennessee
Business Administration
Future Business Leaders of America.
- OMA LEE FRANKLIN** Nashville, Tennessee
Business Education
Future Business Leaders of America; Psychology Club.
- IRENE FRANCES GARRETT** Clarksville, Tennessee
Business Education
Iota Phi Lambda Business Sorority; Lambda Eta Sigma; Future Business Leaders of America.
- DORIS ALYCE GRAY** Houston, Texas
Business Education
Alpha Kappa Alpha Sorority; Future Business Leaders of America.
- KATHRYN J. GUION** Miami, Florida
Business Education
Ivy Leaf Club of Alpha Kappa Alpha Sorority; Future Business Leaders of America; Lambda Eta Sigma.
- LORRAINE OCTARIA HARRISON** Knoxville, Tennessee
Business Education
Future Business Leaders of America; Psychology Club.
- ADDIE LEE JACKSON** Nashville, Tennessee
Business Education
Future Business Leaders of America.



BUSINESS JUNIORS

DOROTHY A. JOHNSON Daytona Beach, Florida

Business Education

Future Business Leaders of America; Baptist Student Union.

MILDRED A. JOYNER Nashville, Tennessee

Business Education

Lambda Eta Sigma; Future Business Leaders of America; Iota Phi Lambda Sorority.

DORIS KIMBLE Baton Rouge, Louisiana

Business Education

Zeta Phi Beta Sorority; College Choir.

CALLIE M. LENTZ Nashville, Tennessee

Business Education

Alpha Kappa Alpha Sorority; Reporter; Lambda Eta Sigma, Second Vice-President; Future Business Leaders of America, President; Psychology Club, President.

WILMA BERNICE LIGGETT Lewisburg, Tennessee

Business Education

Zeta Phi Beta Sorority; Future Business Leaders of America; Psychology Club.

ARNATHA V. LOVE Halls, Tennessee

Business Education

Iota Phi Lambda Sorority; Future Business Leaders of America.

MATTIE JANE MALONE Nashville, Tennessee

Business Education

Future Business Leaders of America; Tennessee Collegiate Co-op.

THEODORE TILMAN MCDAVID Detroit, Michigan

Business Administration

Tennessee State Players Guild; Better Dormitory Club; Future Business Leaders of America; College Choir.

DOROTHY M. MCKEE Birmingham, Alabama

Business Education

Alpha Kappa Alpha Sorority; Future Business Leaders of America.

ERNEST LEE MCKINNEY Johnson City, Tennessee

Business Administration

Lampados Club of Omega Psi Phi Fraternity, Secretary; Psychology Club, Reporter; Future Business Leaders of America; Baptist Student Union.

MAGNOLIA MURRAY Ripley, Tennessee

Business Education

Archonian Club of Zeta Phi Beta Sorority; Future Business Leaders of America.

NELLIE MAI PATTON Nashville, Tennessee

Business Education

Future Business Leaders of America; College Choir.

LUCILLE PEGRAM Nashville, Tennessee

Business Education

Archonian Club of Zeta Phi Beta Sorority; Future Business Leaders of America; College Choir.

ODESSA LEON PERRY Birmingham, Alabama

Business Education

Alpha Kappa Alpha Sorority; Psychology Club; Future Business Leaders of America; Tennessee State Players Guild; Lambda Eta Sigma.

HELEN LOUISE PORTER Frankfort, Indiana

Business Education

Lambda Eta Sigma; Tennessee State Players Guild; Psychology Club; Future Business Leaders of America; Track and Field Team; Student Christian Association.

DONIA L. PREWITT Aberdeen, Mississippi

Business Education

College Choir; Future Business Leaders of America; Baptist Student Union.

CATHERINE FRANCES RAY Union Springs, Alabama

Business Administration

Future Business Leaders of America; Psychology Club.

ODESTINE RAYBON Murfreesboro, Tennessee

Business Education

Alpha Kappa Alpha Sorority; Future Business Leaders of America.

MILDRED SANFORD Quincy, Florida

Business Education

Future Business Leaders of America.

TOMMYE LOUISE SCOTT Nashville, Tennessee

Business Education

Future Business Leaders of America; Ivy Leaf Club of Alpha Kappa Alpha Sorority; College Choir.

MAJOR SKEENS Nashville, Tennessee

Business Education

Archonian Club of Zeta Phi Beta Sorority; Future Business Leaders of America; College Choir.

FRANCES MACEL SMITH Nashville, Tennessee

Business Education

Alpha Kappa Alpha Sorority; Student Council, Secretary; College Choir; Lambda Eta Sigma; Psychology Club; Future Business Leaders of America.

VIVIAN SWANN Rockwood, Tennessee

Business Education

Future Business Leaders of America; Psychology Club.

JOAN ROMBY WILLIAMS Memphis, Tennessee

Business Education

Zeta Phi Beta Sorority; College Choir, Concert Group; Future Business Leaders of America; Baptist Student Union; Collegiate Co-op; Psychology Club.

BUSINESS JUNIORS

FRANKIE MCKEE

Business Education

Delta Sigma Theta Sorority; Future Business Leaders of America.

HELEN ALICIA TUCKER

Chattanooga, Tennessee

Business Education

Delta Sigma Theta Sorority; Iota Phi Lambda; Future Business Leaders of America; Psychology Club.

RICHEL VERN TURPIN

Clanton, Alabama

Business Education

Future Business Leaders of America; Psychology Club.

MILDRED TURRENTINE

Murfreesboro, Tennessee

Business Education

Future Business Leaders of America.

LUCILE WILLIAMS

Nashville, Tennessee

Business Education

Future Business Leaders of America; Psychology Club.

SERAPHINE WILLIAMS

Marianna, Arkansas

Business Education

Future Business Leaders of America; Psychology Club.

JESSIE G. HERNDON

Atlanta, Georgia

Business Education

Ivy Leaf Club of Alpha Kappa Alpha Sorority; Tennessee State Players Guild; Student Christian Association.

EMMETT J. LEE, JR.

Marianna, Arkansas

Business Education

Lampados Club of Omega Psi Phi Fraternity; College Choir, Concert Group; Psychology Club.



DIVISION OF BUSINESS



1. A course in office management, Mrs. Mary Jackson, instructor. 2. Students set up a laboratory co-op in connection with the office management course. 3. A course in shorthand theory. At the board, Mrs. Myrtle Holloway, Miss Callie Leutz, Mrs. Mildred Laster, instructor. 4. A course in typewriting and transcription. Instructors, Mrs. Jackson, Mrs. Laster, Miss Gordon.

The Tennessee Collegiate Co-op originated from an idea presented in the Office Management 221 Class during the fall quarter, 1945. This idea, although small, started a group of anxious and willing young men and women to thinking. The idea of a business became a reality to them. While discussing the chapters on corporation, retail selling, bookkeeping, salesmanship, personnel administration, etc., it was decided that a laboratory co-op would be set up to permit practice for the students in the course and at the same time supply other students of the institution with those "little" things they desire so much, like souvenirs and pennants, under dignified management.

Beginning during Thanksgiving season, with souvenirs and pennants as the only commodity for sale, the Co-op has gradually enlarged its sales to include confectioneries. Through these activities, the students get actual practice in purchasing, advertising, salesmanship, accounting, storeroom keeping, and filing.

The Co-op has now been functioning on a profitable basis for four and one-half months. The organizational management includes: stockholders, who are members of the class; adviser, Mrs. Sylvester Jackson; president, Miss Lucille Evans; vice-president, Miss Ernestine Mathis; secretary, Clarice Weathers; assistant secretary, Margaret Ussery; treasurer, Miss Lillian Love; business manager, Miss Martha Ligon; bookkeeper, Miss Thelma Nolen; advertising agents, Misses Carey Blackwell and Willie P. Aldridge; purchasing agent, Miss Janie Rucker; storeroom clerks, Miss Esther Duke and Miss Bond; sales manager, Miss Vernell Bennett; personnel director, Miss Sarah Guinn; file clerk, Miss Rose Wilkerson; corresponding secretary, Miss Roslyn Marvels.

The bookkeeper is to keep a definite record of all business and make a trial balance sheet at the end of each quarter. The business manager follows the routine of a regular business manager; the treasurer actually deposits the money, writes checks, and keeps an accurate record of all money. Storeroom keepers have charge of material for sale and keep records, issue out and take in material; the purchasing agents purchase all material; the class as a whole are salesmen and get real practice in retail selling and profit.

The Co-op operates on the profit of the sales of the items.

DIVISION OF EDUCATION

Faculty



GEORGE W. GORE, JR., Ph.D.
Director, Professor of Education



OSCAR J. CHAPMAN, Ph.D.
Professor of Psychology



HENRY A. KEAN, M.S.
Professor of Physical Education



LULA S. BARTLEY, M.S.
Associate Professor of Health Education



THOMAS H. HUGHES, M.S.
Associate Professor of Health Education



ZELMA L. REDMOND, M.S.
Associate Professor of Education

DIVISION OF EDUCATION

Faculty



FRANCES A. SANDERS, M.A.
*Associate Professor of Elementary
Education*



FRANCES E. THOMPSON, M.A.
Associate Professor of Art



JESSIE E. ABBOTT, M.S.
*Assistant Professor of Physical
Education*



CLINTON D. CROOKS, M.S.
*Assistant Professor of Physical
Education*



LOIS H. DANIEL, B.S. in L.S.
Assistant Professor of Library Science



THOMAS G. LASTER, M.A.
Assistant Professor of Education

DIVISION OF EDUCATION

Faculty



JOHNIE C. FRANKLIN, A.B.
Secretary to the Dean



BENTON ADAMS, B.S.
Instructor in Art



EUNICE MATTHEW
Assistant Professor of Education



EMMA OWEN, B.S.
Secretary



VELMA SINGLETON, B.L.S.
Instructor in Library Science



EDUCATION SENIORS

- NELL BYNUM ARMSTRONG Chattanooga, Tennessee
Elementary Education
Elementary Education Club; Alpha Kappa Alpha Sorority; Lambda Eta Sigma.
- ANNE BANKS Pensacola, Florida
Elementary Education
Elementary Education Club.
- IRENE JANICE BARLOW Bowling Green, Kentucky
Elementary Education
Elementary Education Club; College Choir.
- BRANDON HARRIS BARTON Nashville, Tennessee
Health and Physical Education
Gamma Iota Alpha Club; Physical Education Club; History Study Club; Kappa Alpha Psi Fraternity.
- JOZEAL H. BASS Nashville, Tennessee
Elementary Education
Elementary Education Club.
- AGNES T. BERRY Nashville, Tennessee
Elementary Education
Elementary Education Club; Library Science Club; Lambda Eta Sigma Sorority; Tennessee State Players Guild.
- ATHALIE ANNA BLAINE Nashville, Tennessee
Elementary Education
- STELLA HESS BOGAN Morris Chapel, Tennessee
Elementary Education
Elementary Education Club.
- MILDRED JUANITA BOWEN Clarksville, Tennessee
Elementary Education
Elementary Education Club.
- EDITH BEATRICE BRADEN Lynnville, Tennessee
Elementary Education
Delta Sigma Theta Sorority; Elementary Education Club.
- VIRGINIA LONG BROCK Florence, Alabama
Elementary Education
Elementary Education Club; Lambda Eta Sigma; Ivy Leaf Club.
- EVELYN F. CARTER Cincinnati, Ohio
Elementary Education
Elementary Education Club.
- BERTHA CARTWRIGHT Nashville, Tennessee
Elementary Education
Elementary Education Club.
- STOKELY BLAINE CLIFFORD Nashville, Tennessee
Elementary Education
Elementary Education Club; Student Christian Union.
- MILIRE LEE DORTCH Pensacola, Florida
Elementary Education
Elementary Education Club.
- GIDEON DYE Nashville, Tennessee
Elementary Education
Elementary Education Club; Alpha Chapter Gamma Iota Alpha.
- SADIE ELIZABETH ETTA Nashville, Tennessee
Elementary Education
Elementary Education Club; Library Science Club.
- THELMA PAYNE FREEMAN Trenton, Tennessee
Elementary Education
Elementary Education Club; Library Science Club.
- ICY MAE DANIEL GREEN Mound Bayou, Mississippi
Elementary Education
Elementary Education Club.
- OCHIE OZELL HARDY Nashville, Tennessee
Elementary Education
Elementary Education Club.
- MARIE LOUISE HARRIS Shelbyville, Tennessee
Elementary Education
Elementary Education Club; Alpha Kappa Mu Honor Society; College Choir.
- GERALDINE WOODS HOFFMAN Nashville, Tennessee
Music and Fine Arts
College Choir.
- COREDA JAMISON Nashville, Tennessee
Elementary Education
- HENRIETTA KELLY
Elementary Education

EDUCATION SENIORS

- ALTA MONYETTE KING** Chattanooga, Tennessee
Elementary Education
Elementary Education Club.
- WILLIE ELIZABETH KINNARD** Franklin, Tennessee
Elementary Education
Zeta Phi Beta Sorority; Elementary Education Club; Tennessee State Players Guild.
- AUDRA LANE** Paducah, Kentucky
Music and Fine Arts
- SADIE JANETTE MARSH** Humboldt, Tennessee
Elementary Education
Elementary Education Club; Psychology Club; Library Science Club; Student Christian Association.
- EUGENIA LOUISE LANDERS** Clarksville, Tennessee
Elementary Education
Elementary Education Club.
- MAYDE LANGFORD** Clarksville, Tennessee
Elementary Education
Elementary Education Club.
- GENEVA McELRATH** Decaturville, Tennessee
Elementary Education
- JESSICA M. OFFICER** McMinnville, Tennessee
Elementary Education
Elementary Education Club; English Club; Pledge of Archonian Club of Zeta Phi Beta Sorority.
- JANE O. OWENS** Nashville, Tennessee
- MAE LIZZIE POPE** Miami, Florida
Elementary Education
Elementary Education Club; Psychology Club; Library Science Club; Future Teachers of America.
- LILLIAN REDMOND** Franklin, Tennessee
Elementary Education
- RUTH W. ROSEBERRY** Atlanta, Georgia
Elementary Education
Elementary Education Club; Library Science Club.
- MYRTLE S. RUSSELL** Nashville, Tennessee
Elementary Education
Alpha Kappa Mu Honor Society; Anti-Basileus; Sigma Gamma Rho Publicity Chairman; Elementary Education Club.
- GLADYSE LORRAINE SALLEE** Clarksville, Tennessee
Elementary Education
Elementary Education Club; Lambda Eta Sigma.
- SARAH N. SHAW** Clarksville, Tennessee
Elementary Education
Secretary of Elementary Education Club.
- SABRA RUTH SOUTHWALL** Mt. Pleasant, Tennessee
Elementary Education
Alpha Kappa Alpha Sorority; Alpha Kappa Alpha Mu Honor Society; Lambda Eta Sigma; Elementary Education Club; Psychology Club; Library Science Club; Student Christian Association.
- LEAH E. STOCKARD** Nashville, Tennessee
Elementary Education
Elementary Education Club; Sigma Gamma Rho Sorority, Secretary.
- ERNESTINE GENEVA SHAW** Clarksville, Tennessee
Elementary Education
Elementary Education Club; College Choir.
- ELIZABETH WILLONIA TAYLOR** Somerville, Tennessee
Elementary Education
Elementary Education Club.
- JOYNER VERNON PATRIE** Nashville, Tennessee
Elementary Education
Elementary Education Club; Student Christian Association.
- GLADYS LORETTA WILLIAMS** Dickson, Tennessee
Elementary Education
Lambda Eta Sigma; Alpha Kappa Alpha Sorority; Alpha Kappa Mu Honor Society; Psychology Club; Library Science Club.
- HELEN WOODS** Nashville, Tennessee
Elementary Education
- DOROTHY WRIGHT** Rockwood, Tennessee
Elementary Education
- CLEVELAND FISHER** Kerrville, Tennessee
Elementary Education





EDUCATION JUNIORS

- VESTA BARNETT Toledo, Ohio
Elementary Education
Elementary Education Club.
- ELMA FAYE BAILEY Trenton, Tennessee
Elementary Education
Elementary Education Club; Psychology Club.
- FANNIE OZELLA BAKER Fayetteville, Tennessee
Elementary Education
Elementary Education Club.
- ELIA BLAKE Fayetteville, Tennessee
Elementary Education
Elementary Education Club; Lambda Eta Sigma; Ivy Leaf Club.
- ELZE E. BOGAN Morris Chapel, Tennessee
Elementary Education
- JAMES CALDWELL Union City, Tennessee
Elementary Education
Elementary Education Club.
- FRANCES CAMPBELL Thompson Station, Tennessee
Elementary Education
- IVY LOUISE DOUGLASS Nashville, Tennessee
Elementary Education
Elementary Education Club.
- LEORA EARLEY Nashville, Tennessee
Elementary Education
Elementary Education Club.
- GERALDINE A. FERGUSON Athens, Tennessee
Elementary Education
Elementary Education Club; Pyramid Club; Library Science Club.
- ETHEL E. FERRELL Cowan, Tennessee
Elementary Education
- DOROTHY ELIZABETH FLUDD Nashville, Tennessee
Elementary Education
Elementary Education Club.
- LAURA FRAZIER Louisville, Kentucky
Elementary Education
Elementary Education Club; Zeta Phi Beta Sorority.
- LOUISE GIBSON Cincinnati, Ohio
Health and Physical Education
Basketball Team; Cheerleader.
- BLOOMIE DAVIS GORE Covington, Tennessee
Elementary Education
Elementary Education Club; Psychology Club; College Choir.
- MARTHA GREENE Columbia, Tennessee
Elementary Education
Elementary Education Club; Lambda Eta Sigma.
- ETTA MAE GRIFFIN Chattanooga, Tennessee
Elementary Education
Elementary Education Club; College Choir; Concert Singers.
- THELMA HAWKINS Nashville, Tennessee
Elementary Education
Elementary Education Club.
- ALBERTA HORNBEAK Centerville, Tennessee
Elementary Education
Elementary Education Club; Sigma Gamma Rho Sorority.
- MAGGIE MAE HOUSE Nashville, Tennessee
Elementary Education
Elementary Education Club; Sigma Gamma Rho Sorority; Psychology Club.
- DOROTHY MAXINE JACKSON Shreveport, Louisiana
Music and Fine Arts
French Club; Concert Singers; College Choir.
- LUCY ELIZABETH JENKINS Clarksville, Tennessee
Elementary Education
Elementary Education Club.
- SARAH C. JORDON Huntingdon, Tennessee
Elementary Education
Elementary Education Club; Library Science Club.
- MARY LOUISE KIZER Lexington, Tennessee
Elementary Education
Elementary Education Club; Psychology Club.

EDUCATION JUNIORS

- ERNESTINE LINDSEY Mt. Pleasant, Tennessee
Elementary Education
Elementary Education Club; Lambda Eta Sigma.
- BEATRYCE MAYBERRY Centerville, Tennessee
Elementary Education
Elementary Education Club.
- CLARA BELL MCADAMS Nashville, Tennessee
Health and Physical Education
- JEANETTE MITCHELL Columbia, Tennessee
Elementary Education
Elementary Education Club; History Study Club; Zeta Phi Beta Sorority.
- JOHNNIE MAI MUMPHREY Nashville, Tennessee
Elementary Education
Elementary Education Club.
- MATTIE L. NUNN Gary, Indiana
Elementary Education
Elementary Education Club; Fourth Estate.
- ROBERT H. OFFICER Algood, Tennessee
Elementary Education
Elementary Education Club.
- CATHRINE PATRICK Jackson, Tennessee
Music and Fine Arts
French Club; College Choir.
- KATHERINE SMITH Huntingdon, Tennessee
Elementary Education
- GERALDINE SPRIGGS Cleveland, Tennessee
Elementary Education
Elementary Education Club.
- EDNA WAYNE WALKER Jackson, Tennessee
Music and Fine Arts
College Choir; Concert Singers; Ivy Leaf Club; French Club.
- BEULAH F. WILSON Nashville, Tennessee
Elementary Education
Elementary Education Club; Tennessee State Players Guild.
- JANIE M. WILSON Pulaski, Tennessee
Elementary Education
Elementary Education Club; College Choir.
- JEANETTA YOUNG Nashville, Tennessee
Elementary Education
Elementary Education Club; Sigma Gamma Rho Sorority.





ELEMENTARY EDUCATION SCENES

Above—Practice Teaching Group

Below—Elementary Education Club

DIVISION OF ENGINEERING

Faculty



PAUL V. JEWELL, M.S.C.
Director, Professor of Engineering



W. V. HARPER, M.S.
*Itinerant Teacher
Trainer in Industrial Education*



MARJORIE SINGLETON, A.B.
Secretary



ENGINEERING SENIORS AND JUNIORS

GEORGE EDWARD DAWSON Mt. Pleasant, Tennessee

Industrial Education

Senior

Gamma Iota Alpha, Sergeant at Arms; Industrial Education Club; Student Christian Association.



JOSEPH BENJAMIN DOBSON Nashville, Tennessee

Industrial Education

Senior

Industrial Education Club; Student Christian Association.



BUFORD L. MITCHELL Nashville, Tennessee

Industrial Education

Senior

Industrial Education; V. I. A., Veteran.



HERSCHEL GREEN WOODS Murfreesboro, Tennessee

Industrial Education

Senior

Phi Beta Sigma Fraternity; V. I. A., Veteran.



WILLIE L. HARLEY Jacksonville, Florida

Industrial Education

Junior

Psychology Club; Red Cross Volunteer; First Aid Detachment.



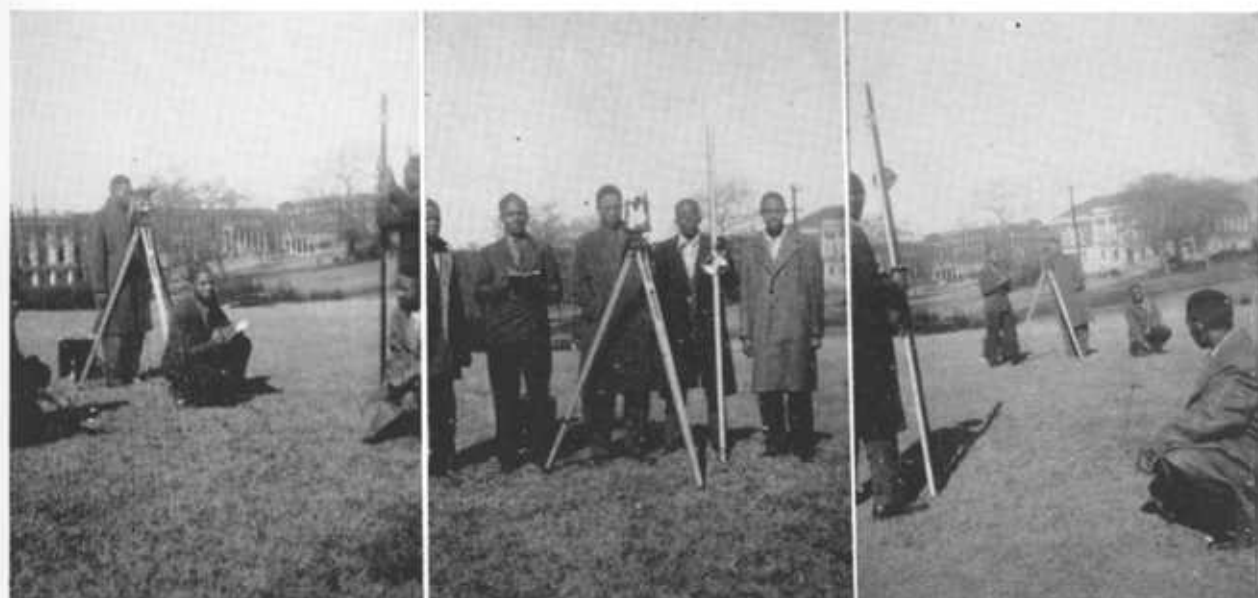
PHILEMON H. WOODARD Nashville, Tennessee

Industrial Education

Junior

Industrial Education Club.

DIVISION OF ENGINEERING



These pictures show a few of the young men in the surveying class in the Division of Engineering. Being the "baby" division of Tennessee State College, we have aroused many a student's curiosity as they watched in bewilderment these different groups of young men seemingly doing nothing but looking through "some kind of instrument." In the pictures these young men are not just looking through some kind of instrument. They are "sighting" through a transit (valued from \$300 to \$400) and they can tell you the height of the ground from mean sea level or the approximate height of the sun on that particular day or just about anything one could ask about "Mother Earth" or some of her properties. And above all, it would be right, not almost right, but exactly right. One of our mottoes is, "If it isn't right, it's wrong."

Members of the faculty as well as students have asked us to allow them to look through the transit. Then in a tone of disappointment he or she would remark, "I don't see anything!" They would skeptically ask what do we see as we sight through the instrument. "What do we see?" As we look straight through the instrument, focusing the cross hairs on today and tomorrow, we see at last a chance for the Negroes of the South to reach the top rung in the ladder of success in the field of engineering. We see another victory for the world of tomorrow.

Division of History and Social Science

Faculty



MERL R. EPSE, M.A.
Director of Division of Liberal Arts



SUSIE O. BRYANT, Ph.D.
Professor of History



HUGH H. SMYTHE, Ph.D.
Associate Professor of Sociology



WILLIAM F. BUTLER, M.A.
Associate Professor of Social Studies



RALEIGH A. WILSON, M.A.
*Associate Professor of History and
Government*



BLANTON E. BLACK, M.A.
Assistant Professor of Geography

Division of History and Social Science

Faculty



GLADYS BUTLER
*Assistant Professor of Social
Administration*



FREDERICK J. D. MCKINNEY, M.A.
Registrar



SAMMIE CARUTHERS, B.S.
*Secretary to the Division of History
and Social Science*

History and Social Science SENIORS

CLARENCE C. BASS Nashville, Tennessee
History Study Club; Good Government Club; Baptist Convention.

MARGUERITE E. BASS Nashville, Tennessee
Tamiochus of Alpha Kappa Alpha Sorority; History Study Club; Quill Club of Lambda Eta Sigma; French Club; Student Christian Association; Psychology Club; Future Teachers of America.

EMMA LEE BECKETT Dyersburg, Tennessee
History Study Club; Delta Sigma Theta; Future Teachers of America.

CARRIE RUTH BOSTON Nashville, Tennessee
History Study Club; Future Teachers of America; Psychology Club.

CHARLES THOMAS BRANDON Huntersville, Alabama
Omega Psi Phi; Delta Phi Delta; College Choir.

LENA WILL BUTLER Nashville, Tennessee
History Study Club; Future Teachers of America.

BIRDEN EDWARD CALLIER, B.T.L. Tullahoma, Tennessee
Pastor of Mt. Zion Baptist Church; President of Sunday School Convention of the Elk River Association; President of Civic League.

NAN RUTH DEADERICK Nashville, Tennessee
History Study Club; Future Teachers of America.

ELIJAH LEE DREW, JR. Nashville, Tennessee
Baptist Student Union.

THERESA DELORES FENNIE Memphis, Tennessee
Zeta Phi Beta Sorority; History Study Club; Lambda Eta Sigma.

ALLURA BEATRICE FREEMAN Memphis, Tennessee
History Study Club, President; Delta Phi Delta, President; Alpha Kappa Alpha Sorority.

ROSIE LEE GILCHRIST Alton, Illinois
History Study Club; Lambda Eta Sigma, Future Teachers of America.

GWENDOLYN ALICE GOODEN Nashville, Tennessee
History Study Club; Delta Sigma Theta Sorority.

BILLIE J. HALL Gallatin, Tennessee
History Study Club.

ROSALEE MASCELIA HARTZOG Jackson, Florida
History Study Club; Delta Phi Delta, Treasurer; Future Teachers of America, President.

DOROTHY MARIE HERNDON Chicago, Illinois
History Study Club; Delta Phi Delta, Secretary; Tennessee State Players Guild; Future Teachers of America.

LEILA GWENDOLYN HODGES Nashville, Tennessee
History Study Club; Baptist Student Union.

ERNESTINE WILKINS Nashville, Tennessee
History Study Club; Student Christian Association; Future Teachers of America.

KENNARD COOPER JONES Nashville, Tennessee
History Study Club; Omega Psi Phi; Tennessee State Players Guild.

MAGGIE F. KIRKENDALL Lebanon, Tennessee
History Study Club; Psychology Club; Student Christian Association; Aurora Club.

HELEN MARIE LAWSON Pensacola, Florida
History Study Club; Delta Sigma Theta; Tennessee State Players Guild.

CATHERINE LUCILE MURRAY Nashville, Tennessee
Delta Sigma Theta; Lambda Eta Sigma; History Study Club.

MARTHA LOUISE PIPES Memphis, Tennessee
History Study Club; Future Teachers of America; Ivy Leaf Club.

REV. J. ROYSTER POWELL Nashville, Tennessee
Sphinx Club; Tennessee State Players Guild; History Study Club; Student Christian Association.

History and Social Science SENIORS AND JUNIORS

MARION B. SMITHSON Nashville, Tennessee
History Study Club; Omega Psi Phi Fraternity; Veterans' Club.

THEOLA PIERSON TAYLOR Ripley, Tennessee
Student Christian Association; History Study Club; French Club.

ALICE LOUISE WARLEY Lookout Mountain, Tennessee
History Study Club; Student Christian Association; Future Teachers of America.

GLORIA D. WIGGINS Birmingham, Alabama
History Study Club; Psychology Club; Future Teachers of America.

ROSABEL CHRIS EVANS Nashville, Tennessee
Junior
Zeta Phi Beta Sorority; History Study Club; Delta Phi Delta.

BENNIE MARSHALL BATTS Grand Rapids, Michigan
Junior
History Study Club; Kappa Alpha Psi Fraternity; College Choir; Concert Singers.

FRANK HUMAN BLEVINS, II Selma, Alabama
Junior
History Study Club; Spanish Club; Veterans' Club.

FLORA ESTABELLE BOWEN Clarksville, Tennessee
Junior
History Study Club; Los Buena Vecinos; Student Christian Association.

MARION VON CONNOR Columbus, Mississippi
Junior
History Study Club; Spanish Club.

MARY E. COSBY Nashville, Tennessee
Junior
History Study Club; French Club.

MILDRED GRACE CRAWFORD Meridian, Mississippi
Junior
Concert Singers, College Choir; Ivy Leaf Club; Women's Ensemble; Student Christian Association.

MABEL CUNNINGHAM Chattanooga, Tennessee
Junior
History Study Club; Baptist Student Union.

LUCY M. DOVE Fernandina, Florida
Junior
Tennessee State Players Guild; College Choir; Spanish Club; History Study Club.

FALLS WILLIAM PINKNEY Mount Mourne, North Carolina
Junior
History Study Club; Spanish Club.

VERA FOWLER South Bend, Indiana
Junior
Zeta Phi Beta; History Study Club; Spanish Club.

BEATRICE S. SMITH Nashville, Tennessee
Junior
History Study Club; Spanish Club.

D. KATHARYN MCGILL Nashville, Tennessee
Junior
Delta Sigma Theta Sorority; Junior Class Secretary; History Study Club.

VIOLEAN JOHNSON Cannon, Mississippi
Junior
History Study Club; Spanish Club.

WERTIE MAI JOHNSON Nashville, Tennessee
Junior
History Study Club; French Circle; College Choir.

RUTH ESTERLEAN HOUSE Nashville, Tennessee
Junior
Baptist Student Union, Secretary; Junior Class; History Study Club.

LATISHA HARVEY Oxford, Mississippi
Junior
History Study Club; College Choir; Delta Sigma Theta Sorority; Psychology Club.

MARTHA LORAIN NICHOLS Jackson, Tennessee
Junior
Tennessee State Players Guild; Spanish Club; History Study Club.

MARTHA OWENS Nashville, Tennessee
Junior
History Study Club; Fourth Estate; Tennessee State Players Guild; Psychology Club.

KATHERINE BIRDIE JONES Nashville, Tennessee
Junior
History Study Club.





History and Social Science JUNIORS

RUFUS WALTER TEASE Nashville, Tennessee
Junior
Veterans' Organization; American Legion; Booker T. Washington Lodge.

VIVIAN REID Anderson, Indiana
Junior
History Study Club; Ivy Leaf Club; Sunday School Cabinet.

EUGENIA P. TURNER Nashville, Tennessee
Junior
French Club; History Study Club; Zeta Phi Beta Sorority.

HARVEY R. SIMS Nashville, Tennessee
Junior
Alpha Phi Alpha; Tennessee State Players Guild; Veterans' Organization;
History Study Club.

WALTER WEST Dyersburg, Tennessee
Junior
History Study Club.



PRIDE OF TENNESSEE LODGE, NO. 1102

Improved Benevolent Protective Order Elks of the World

State Elks Oratorical Winners—Entering Tennessee A. & I. State College
Fall, 1945

W. S. DAVIS	Tennessee A. and I. State College	<i>President</i>
AMELIA DORSE	Manassas High School, Memphis	<i>State Winner</i>
MARY MAGDALENE LEWIS	Pearl High School, Nashville	<i>Scholarship Winner</i>
JUANITA GILL	Haynes High School, Nashville	<i>Scholarship Winner</i>
LAURA JONES	Bransford High School, Springfield	<i>Scholarship Winner</i>
PROF. MERL R. EPPSE	Tennessee A. and I. State College, Nashville 8, Tennessee	<i>State Director</i>

DIVISION OF HOME ECONOMICS

Faculty



CHRISTINE ALEXANDER, M.A.
Associate Professor of Foods and Nutrition



MIRIAM TOWNS, B.S.
Instructor in Child Care



MATTYE C. FLOWERS, M.S.
Associate Professor of Home Economics



ROSEMMA BURNEY, M.A.
Instructor in Home Economics



MISS MATTIE E. BIOCS, B.S.
Dietitian



CATHERINE B. MCKINNEY, B.S.
Instructor in Home Economics

HOME ECONOMICS SENIORS

ANNIE MAE ALLEN Memphis, Tennessee
Delta Sigma Theta Sorority; History Study Club; Psychology Club.

CAREY ELIZABETH BEAL Franklin, Tennessee
Home Economics Club; Women's Ensemble; College Choir.

ROSIE CORNELIA BEASLEY Columbia, Tennessee
Home Economics Club; Tennessee State Players Guild; Student Christian Association.

DOROTHY ALTHEMA BROWN Dyersburg, Tennessee
Home Economics Club; Lambda Eta Sigma; Student Christian Association.

RUTH ELIAS COLLINS Memphis, Tennessee
Home Economics Club; Alpha Kappa Alpha Sorority; Tennessee State Players Guild; Psychology Club.

VERNELL CHATMAN Forrest City, Arkansas
Home Economics Club; Zeta Phi Beta Sorority.

MATTIE ESTHER CHISS Greenville, Mississippi
Home Economics Club; Sigma Gamma Rho Sorority.

ROSE ELLEN COTHREN Byington, Tennessee
Home Economics Club; Delta Sigma Theta Sorority; College Choir.

MAYME CURTIS Alton, Illinois
Home Economics Club; Pyramid Club.

WILLIE DEAN DEBOW Lebanon, Tennessee
Home Economics Club; Vice-President; Alpha Kappa Mu Honor Society, President.

AUDREY B. DOUGLASS Nashville, Tennessee
Home Economics Club.

RAMELLE EDDINS Memphis, Tennessee
Home Economics Club; Home Economics Council; Student Christian Association.

TIPPIE LORENE EGGLETON Roanoke, Virginia
Home Economics Club; Pyramid Club.

MABEL DEVERNELEE GARNER Memphis, Tennessee
Home Economics Club; Delta Sigma Theta Sorority; Lambda Eta Sigma.

CORNELLA HARRIS Cleveland, Mississippi
Home Economics Club; Student Christian Association.

DOROTHY HARRIS Huntsville, Alabama
Home Economics Club; Alpha Kappa Alpha Sorority.

BEATRICE HAY Brownsville, Tennessee
Home Economics Club.

MAYME HENLEY Loudon, Tennessee
Home Economics Club; Lambda Eta Sigma; Student Christian Association.

JESSIE M. LACEY Kennedy, Alabama
Home Economics Club; Tennessee State Players Guild; Lambda Eta Sigma.

LORENTA A. MCCALL Nashville, Tennessee
Home Economics Club; Lambda Eta Sigma; Tennessee State Players Guild.

PAULINE McELRATH Decaturville, Tennessee
Home Economics Club.

DOROTHY MCKINNIE Bolivar, Tennessee
Home Economics Club; Alpha Kappa Alpha Sorority; Alpha Kappa Mu Honor Society.

ESTHER L. MORTON Nashville, Tennessee
Home Economics Club.

MADELINE WILLIAMS O'NEAL Memphis, Tennessee
Home Economics Club; Lambda Eta Sigma.



HOME ECONOMICS SENIORS AND JUNIORS

OPHELIA PITT Cedar Hill, Tennessee
Home Economics Club; Zeta Phi Beta Sorority; Lambda Eta Sigma.

RUBY PRIGMORE Sweetwater, Tennessee
Home Economics Club; Alpha Kappa Alpha Sorority; Alpha Kappa Mu Honor Society; College Choir; Concert Singers.

ARNELL REED Brownsville, Tennessee
Home Economics Club.

MARY PEARL REID Donelson, Tennessee
Home Economics Club.

CALLIE MATTHEWS SPAIN Nashville, Tennessee
Home Economics Club.

MARY FRANCES TALLEY Columbus, Georgia
Home Economics Club; Alpha Kappa Alpha Sorority; Lambda Eta Sigma.

THELMA TAYLOR Durant, Mississippi
Home Economics Club.

EARLINE WARD Memphis, Tennessee
Home Economics Club; Delta Sigma Theta Sorority.

FREDDIE WARD Memphis, Tennessee
Home Economics Club.

RUTH H. WELCH Hamtramck, Michigan
Home Economics Club; Zeta Phi Beta Sorority.

MARIE WITHERSPOON Murfreesboro, Tennessee
Home Economics Club.

SUNE MAE AVANT Murfreesboro, Tennessee
Home Economics Club.

MILDRED BAILEY Nashville, Tennessee
Home Economics Club; Future Business Leaders of America.

ORETHA BATES Birmingham, Alabama
Home Economics Club.

CORINE BOYD Stanton, Tennessee
Home Economics Club.

NELDA RUTH CLARK Jackson, Mississippi
Home Economics Club; Ivy Leaf Club.

ELLIE DAVIS Rose Hill, Mississippi
Home Economics Club; Psychology Club.

MARY H. DOTSON Nashville, Tennessee
Home Economics Club.

NETTIE DUMAS Arlington, Alabama
Home Economics Club; Ivy Leaf Club; Lambda Eta Sigma.

BARBARA EDDINS Memphis, Tennessee
Home Economics Club; Student Christian Association.

ELEANOR GRAY Concan, Tennessee
Home Economics Club; College Choir; Concert Singers.

MARY GREATHOUSE Nashville, Tennessee
Home Economics Club; Lambda Eta Sigma; Tennessee State Players Guild.

MARY HOPKINS Henderson, Tennessee
Home Economics Club; Ivy Leaf Club; Student Christian Association.

HOME ECONOMICS JUNIORS

ALMA HORMAN Lexington, Tennessee
Home Economics Club; Lambda Eta Sigma.

CARRIE JOHNSON Murfreesboro, Tennessee
Home Economics Club.

GLADYS JUDKINS Tuskegee, Alabama
Home Economics Club.

ALICE LOVELY Knoxville, Tennessee
Home Economics Club; Pyramid Club.

ELOISE NEWBERN Athens, Tennessee
Home Economics Club; Student Christian Association.

MINERVA NORMENT Whiteville, Tennessee
Home Economics Club.

MARY B. PRICE Limestone, Tennessee
Home Economics Club.

ADDIE PRIMM Nashville, Tennessee
Home Economics Club; Ivy Leaf Club.

ALBERTA REID Thomasville, Georgia
Home Economics Club.

PEARLINE STEWART Birmingham, Alabama
Home Economics Club; Ivy Leaf Club.

EDNA SUMMER Waverly, Tennessee
Home Economics Club; Psychology Club.

HILDA PORTER TRAVIS Paris, Tennessee
Home Economics Club; Student Christian Association.

FRANKIE UPTON Sweetwater, Tennessee
Home Economics Club.

GENELLA ROBINSON Sheffield, Alabama
Home Economics Club.





HOME ECONOMICS SCENES



1. Foods and Nutrition. 2. Clothing and Textiles.
3. Nursery School. 4. Home Management Class. 5. Practice Teaching Group.

DIVISION OF HUMANITIES

Faculty



THOMAS E. POAG, Ph.D.
*Head of the Department of
Humanities
Professor of English and Speech*



J. RANDOLPH FISHER, M.A.
Assistant Professor of English



EARL R. SASSER, Ph.D.
Professor of English



VIRGINIA S. NYABONGO, Ph.D.
*Associate Professor of Romance
Languages*



LAURA M. AVERITTE, M.A.
Associate Professor of English



ALMA T. WATKINS, M.A.
*Assistant Professor of Romance
Languages*

DIVISION OF HUMANITIES

Faculty



MARY F. CARTER, M.A.
Instructor in English



VIRGIE HALE, B.A.
Instructor in English



ALMA D. JONES, M.A.
Professor of English



S. M. POSEY, B.S.
Instructor in English



HELENA BLACK, M.A.
*Instructor in English and Romance
Languages*



H. G. WILHOITT, B.S.
Secretary to Division of Humanities

HUMANITIES SENIORS AND JUNIORS

HUGH MARSHALL BLACKWELL Nashville, Tennessee

English

Senior

Lambda Eta Sigma; English Club; Gamma Iota Alpha.

THELMA LOUISE BROWNE Alcoa, Tennessee

English

Senior

Zeta Phi Beta Sorority; Fourth Estate Pledge Club; English Club; Sunday School Cabinet.

EDNA M. DOZIER Battle Creek, Michigan

English

Senior

Tennessee State Players Guild; English Club; Student Christian Association; College Choir.

JULIUS E. HIGGINS, JR. East St. Louis, Illinois

English

Senior

Alpha Phi Alpha Fraternity; English Club; Tennessee State Players Guild; Veterans' Club.

MILDRED E. JOHNSON Monroe, Louisiana

English

Senior

French Club; English Club.

THEMETRIUS E. JONES

English

Senior

French Club; English Club; Zeta Phi Beta Sorority.

HELEN VARALYN JORDAN Toledo, Ohio

English

Senior

English Club; French Club.

ORA LEE MARSH Humboldt, Tennessee

English

Senior

Tennessee State Players Guild; College Choir; Spanish Club; English Club; Fourth Estate Pledge Club.

JOHN BERTA MARTIN Alcoa, Tennessee

English

Senior

Phi Beta Sigma Fraternity; English Club; Spanish Club.

JERALDINE T. MONTFORD Burgan, North Carolina

English

Senior

CARRIE BELLE TADLEY Chattanooga, Tennessee

English

Senior

English Club; Spanish Club.

YVONNE ODESSA WINTERS Indianapolis, Indiana

English

Senior

Zeta Phi Beta Sorority; Tennessee State Players Guild; Student Christian Association; English Club.

GRACE WITHERSPOON Beaver Fall, Pennsylvania

French

Senior

Delta Sigma Theta Sorority; French Club; Spanish Club; Student Christian Association.

MARY ANN BRITTON Memphis, Tennessee

English

Junior

English Club.

ARLETTE MADISON Louisville, Kentucky

French

Junior

Delta Sigma Theta Sorority.

FRANKIE MCKEE New York, New York

English

Junior

Delta Sigma Theta Sorority.

CATHERINE PARRISH Franklin, Tennessee

English

Junior

English Club; Tennessee State Players Guild; Spanish Club.

ARTHUR A. RAMBO Minden, Louisiana

Romance Languages

Junior

Beta Kappa Chi Honorary Society; Science Club; French Club; Spanish Club.

MARY ALICE ROBERTS Nashville, Tennessee

English

Junior

English Club; French Club.

EDWINA WELLS Chicago, Illinois

English

Junior

Lambda Eta Sigma Honorary Society; Ivy Leaf Club; Psychology Club; English Club.

REBECCA E. WILLIAMSON Louisville, Kentucky

English

Junior

College Choir; Concert Singers; Spanish Club; English Club; Tennessee State Players Guild; Baptist Student Union.



DIVISION OF SCIENCE

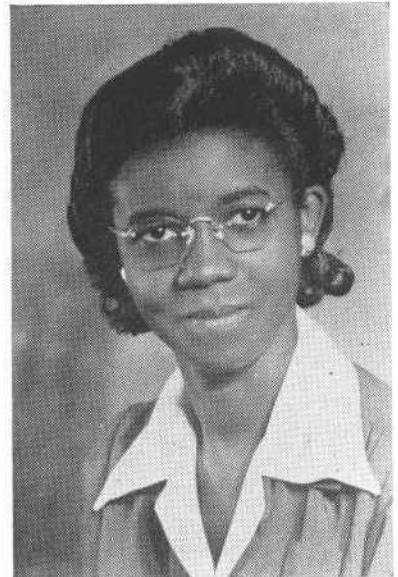
Faculty



MARTH A. ALLEN, M.A.
Instructor in General Science



V. E. MCCAIN, M.S.
*Instructor of Mathematics for
Veterans*



SADIE GASSOWAY, M.S.
Instructor in Mathematics



ANNIE G. SASSER, M.S.
Instructor in Mathematics



MATTIE ARRINGTON, B.S.
Secretary to the Division of Science

DIVISION OF SCIENCE

Faculty



HUBERT B. CROUCH
Director of the Division of Science



ALGER V. BOSWELL, M.A.
Professor of Mathematics



CARL M. HILL, Ph.D.
Professor of Chemistry



L. R. POSEY, JR.
*Head of Department of Physics
Professor of Physics*



MYRON B. TOWNS, Ph.D.
Professor of Chemistry



MARION A. RICHARD, Ph.D.
Associate Professor of Biology

SCIENCE SENIORS AND JUNIORS

CHARLES H. COLEMAN Spartanburg, South Carolina
Science
Senior

THOMAS HENRY PINSON Memphis, Tennessee
Science
Senior

LONNIE E. EDMONSON Lebanon, Tennessee
Science
Junior

WILLIE CLAUDIA BISHOP Greenwood, Mississippi
Chemistry
Junior
French Club; Beta Kappa Chi Honorary Scientific Society.

WILLIAM CLARK TURNER East St. Louis, Illinois
Chemistry
Junior
Psychology Club.

VICTORIA A. MEDDLING Nashville, Tennessee
Mathematics
Junior

ELVIN D. STEWART Nashville, Tennessee
Science
Junior

CHARLES J. SMITH, III Hampton Institute, Virginia
History, Social Science
Junior
History Study Club; Omega Psi Phi, Basileus Rho Phi Chapter; Junior Class President; Better Dormitory Club, President; Student Council, Vice-President; Delta Phi Delta, Vice-President; Editor in Chief of *Ayeni Collegian*; Track and Tennis Team.

JOHN W. STEPHENS St. Louis, Missouri
History, Social Science
Junior
Phi Beta Sigma Fraternity; Science Club; Junior Class Host-Hostess Committee.

SAMUEL GREGORY Detroit, Michigan
Biology
Junior

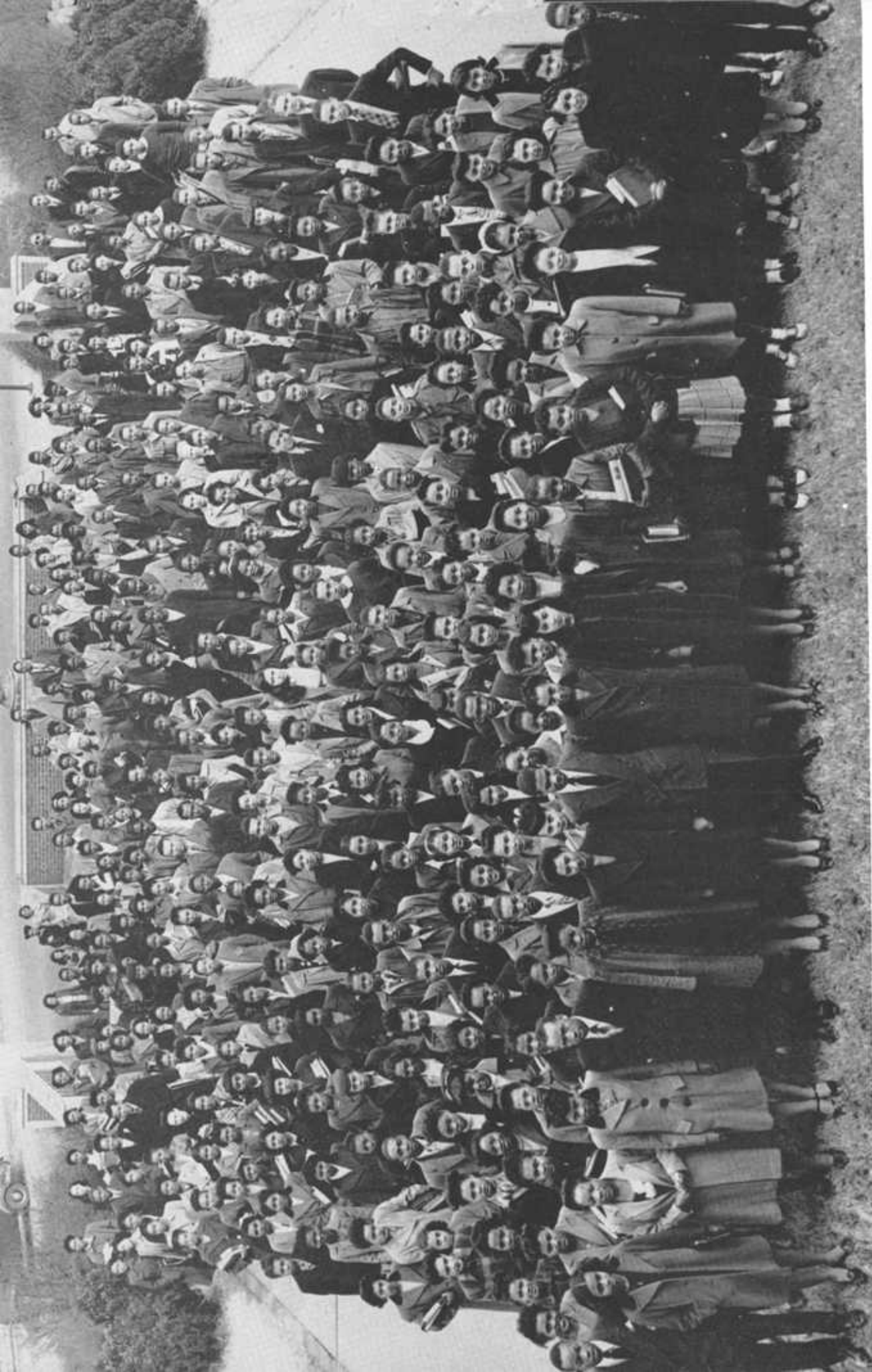




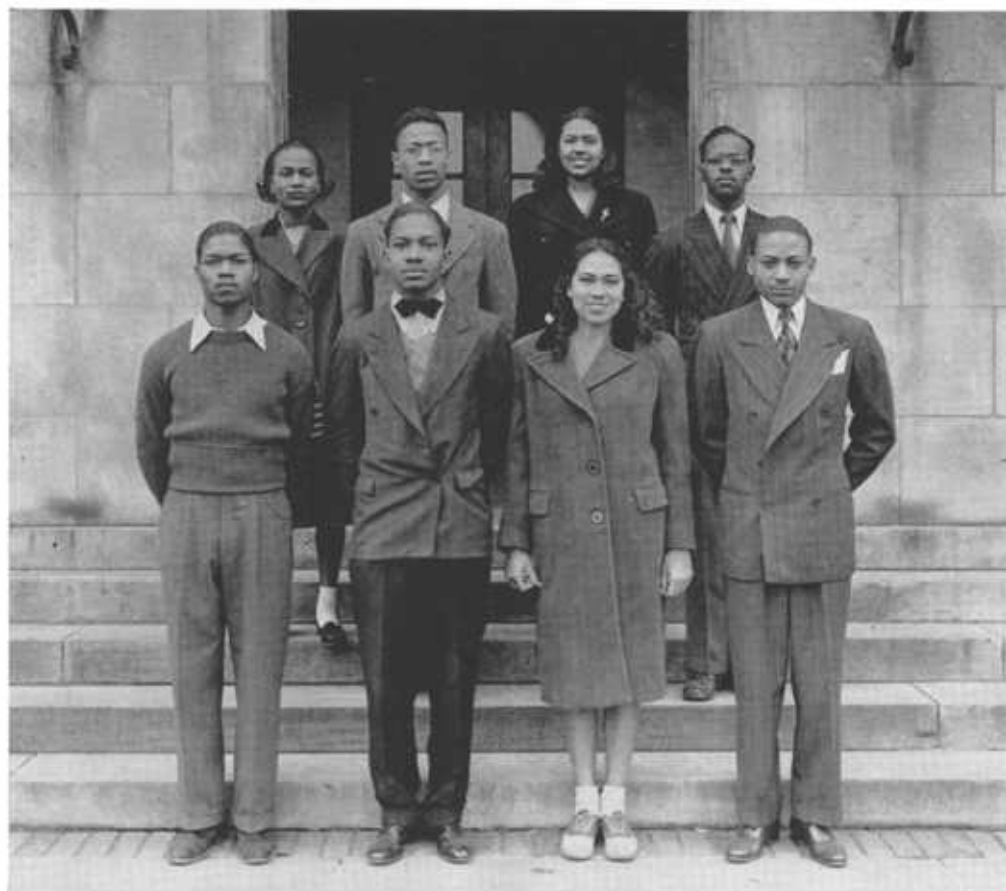
SOPHOMORE



CLASS



FRESHMAN CLASS

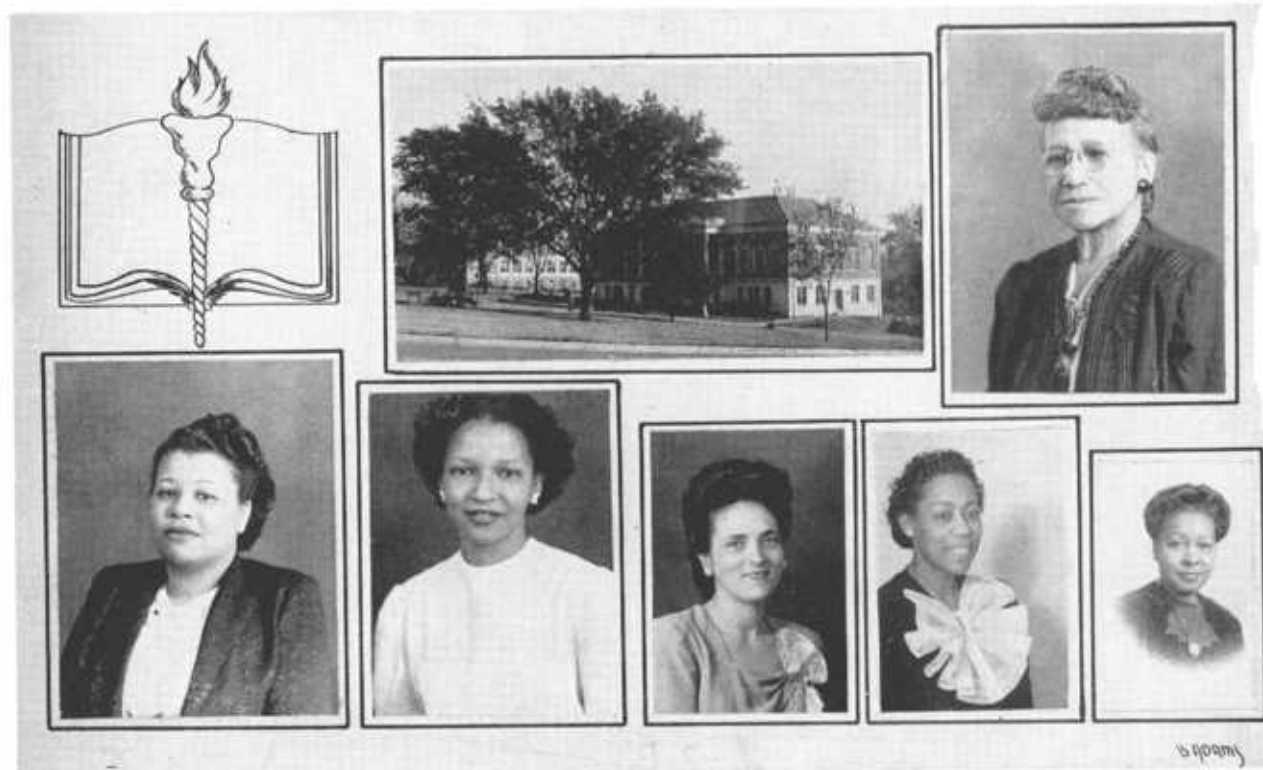


SOPHOMORE CLASS OFFICERS



FRESHMAN CLASS OFFICERS

COLLEGE LIBRARY



Top: Memorial Library erected 1927; Mrs. Martha M. Brown, Library Consultant. *Bottom, left to right:* Lois H. Daniel, Director; Velma Singleton, Reference-Periodicals; Bessie L. Kean, Circulation; Collye Lee Riley, Cataloger; Modestine Young, Reserves.

The Memorial Library, erected in 1927 in the center of the campus, is easily accessible to academic buildings and dormitories. Until 1933 it housed administrative offices but since then has been used primarily for library purposes. Approximately 30,000 volumes are found in the stacks on the second floor adjacent to the general reading room which seats 125 persons. In the fall, 1946, the reference collection was moved to the first floor where reference and periodical services were combined. A textbook collection consisting of all textbooks used in the public school system of Tennessee is the nucleus around which a materials bureau is being developed. This collection and also government documents are located in two small rooms adjacent to the reference-periodical room which seats approximately fifty students.

In keeping with the major objective to improve library services to students and faculty members, two full-time librarians were added to the staff at the beginning of the school year. The library staff now includes the following groups: six full-time librarians, four of whom hold library science degrees; two part-time adult assistants; twelve student assistants. To Mrs. Martha M. Brown goes much credit for the development of the Memorial Library. Since 1923 Mrs. Brown has served the college in the capacity of head librarian. In September, 1946, Miss Lois H. Daniel was appointed director of library, a position that carries with it the responsibility of developing a university library to serve an evolving university program for Negroes in Tennessee.



SCENES IN LIBRARY

HEALTH SERVICE



S. H. FREEMAN, M.D.
School Physician



D. H. TURPIN, D.D.S.
School Dentist



QUEEN WASHINGTON, R.N.
School Nurse

INTERCOLLEGIATE ATHLETICS

FOOTBALL



TENNESSEE STATE 1945 FOOTBALL SQUAD



Miss Tennessee State College



MISS EDITH BEATRICE BRADEN
Division of Education
Member Delta Sigma Theta Sorority

By student acclamation "Miss Tennessee State College" for the year 1945-46 is Edith Beatrice Braden of Lynnville, Tennessee, a senior in the Division of Education.

As a graduate of Bridgeforth High School, Pulaski, Tennessee, Miss Braden had the distinction of being elected "Miss Bridgeforth High" during her junior year. Her college affiliations include membership in Delta Sigma Theta Sorority, History Study Club, and the Elementary Education Club.

Included among her many interests are reading and the theatre. Asked how she received the election, Miss Braden claims the honor as a personal challenge for the loyalty placed in her by the student body of more than 1,400, the faculty, and the president of one of America's leading Negro colleges.

She is the daughter of Mr. and Mrs. M. C. Braden of Lynnville, Tennessee. Her father is a stonemason and a leading citizen of Giles County.

Miss Braden reigned supreme at the home-coming game with Kentucky State College on November 29.

THE ATHLETIC COMMITTEE



MR. H. A. KEAN
Coach and Director of Athletics



PRESIDENT W. S. DAVIS
Chairman



MR. A. V. BOSWELL
Professor of Mathematics

The Athletic Committee of Tennessee State College is a major unit of the college, and its importance should not in any way be underestimated. The committee has developed the programs of intramural and intercollegiate sports for both boys and girls into a well-rounded and diversified calendar and has brought the institution national recognition through its excellent development of the major and minor sports. In structure the Athletic Committee is similar to the athletic association of most colleges, and its purpose is to establish, administer, and supervise all athletic policies of the college, including the expenditures for improvement of athletics, the scheduling of games, the awarding of letters to deserving students, and the selection of coaches and other athletic aides.

The management of athletics is handled by Dr. O. J. Chapman, Professor of Education, subject to the approval of the Athletic Committee. All publicity in connection with the college's athletic program, including football, basketball, boxing, tennis, swimming, track and field events, is collected, assembled and released to the public by the Department of Athletic Publicity of which Dr. Chapman is the Director. This department serves as the official mouthpiece of the Athletic Committee and as a clearinghouse for all news pertaining to athletics at the college. All artistic painting is performed at the present time by Carlos Bruce, sophomore art student.



CARLOS BRUCE
*Artistic Painter for Department of
Athletic Publicity*



DR. O. J. CHAPMAN
*Director of Athletic Publicity and
Business Manager of Athletics*

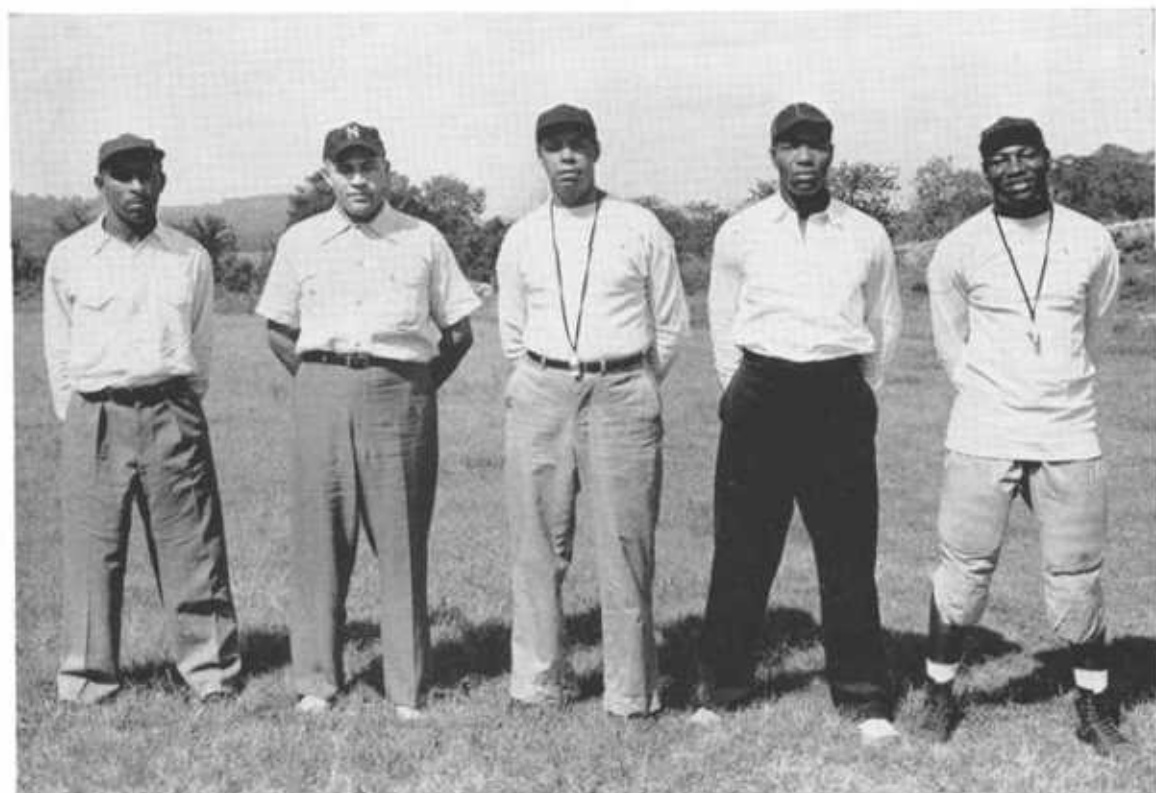


V. E. MCCAIN
Assistant Coach



H. A. KEAN
Head Coach

TENNESSEE STATE COLLEGE BOARD OF STRATEGY



Left to right: V. E. McCain, Assistant and Backfield Coach; Dr. O. J. Chapman, Director of Athletic Publicity and Business Manager of Athletics; H. A. Kean, Head Coach; C. D. Crooks, End Coach; S. D. Little, Line Coach. D. D. Nollez, Line Coach, does not appear in picture.

THE TIGERS OF 1945-46

(1945 and 1946 National Vulcan Bowl Winners)



R. WHITMAN



C. JONES



B. DIXON



H. HOLBERT



I. JONES



R. PULLEY



N. TAYLOR



W. LEANORD



W. BASS



W. SMITH



W. JOHNSON



E. WYNN



R. DRUMMOND



H. GILMORE



J. BOLDEN



D. WHITMAN



W. WASHINGTON



U. McPHERSON

THE 1946 VARSITY FOOTBALL LETTER MEN



William Bass, 1945 All-American, gains fifteen yards around end in Florida game



Coronation of Miss Tennessee State (Edith Braden) and Miss Kentucky State (Lillian Gillespie), with escorts Benjamin Saulters and Edward Mullins, at end of first half of the Tennessee versus Kentucky football game at Nashville, November 29, 1945. Tennessee won, 9-0.



Raymond Whitman, crack halfback, rushes in to break up a Wilberforce pass, thrown to H. Banks, end, No. 18. All-American tackle, Robert Drummond, No. 34, can be seen in the background.

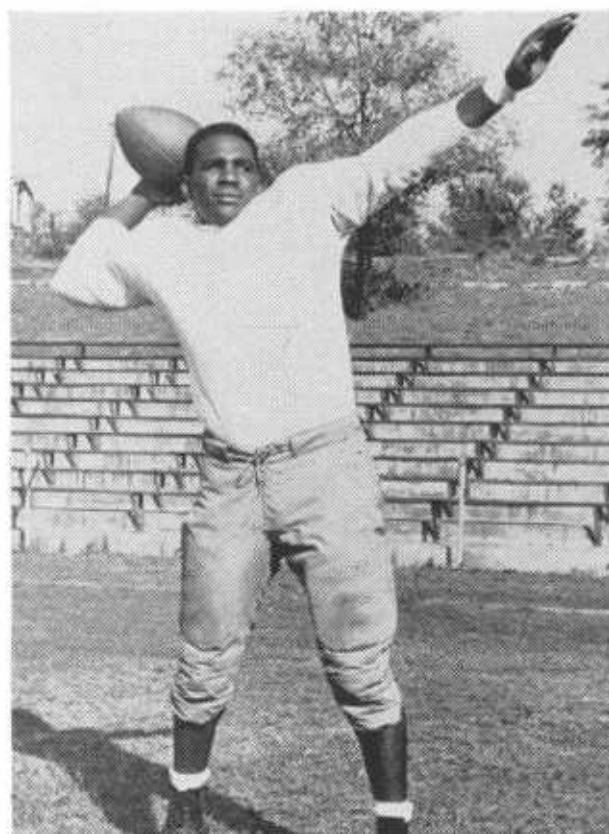
MISS TENNESSEE STATE AND ATTENDANTS



TENNESSEE STATE COEDS LINE UP FOR HOME-COMING CELEBRATION

In the pictures above in street clothes and evening attire are, left to right: MAXINE HARRIS, freshman, Lebanon, Tennessee; KATHRYN MCGILL, junior, Lanet, Alabama; EDITH BRADEN, senior, Lynnville, Tennessee (Miss Tennessee State); HARRIET JOHNSON, sophomore, Bowling Green, Kentucky; GLORIA PORTER, senior, Columbia, Tennessee.

TENNESSEE STATE'S 1945 ALL-AMERICANS



WILLIAM BASS
Halfback

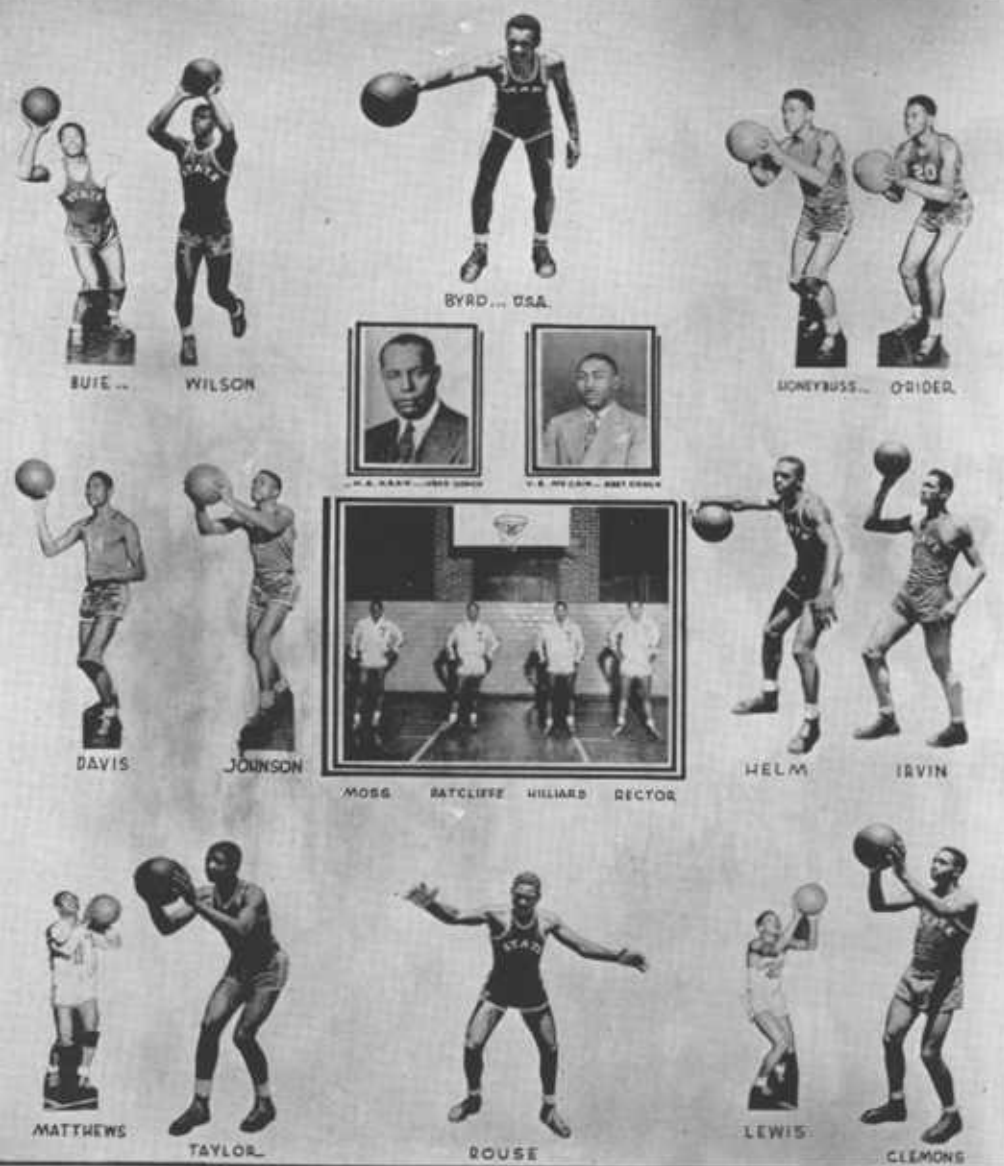


ROBERT DRUMMOND
Tackle

1945 FOOTBALL RESULTS

Tennessee State College.....	32	Fort Benning Reception Center.....	0
Tennessee State College.....	0	Langston University.....	13
Tennessee State College.....	87	Philander Smith College.....	0
Tennessee State College.....	21	Clark College.....	0
Tennessee State College.....	21	Wilberforce University.....	0
Tennessee State College.....	18	Florida A. and M. College.....	20
Tennessee State College.....	33	Southern University.....	0
Tennessee State College.....	36	Lincoln University.....	6
Tennessee State College.....	9	Kentucky State College.....	0
Tennessee State College.....	45	Godman Field Bombers.....	24
Tennessee State College.....	33	Texas College.....	6

BOYS' BASKETBALL



1946 VARSITY BASKETBALL TEAM

1945-1946 BASKETBALL RESULTS

Tennessee State College	50	Tuskegee Institute	28
Tennessee State College	74	Hammond Big Five	29
Tennessee State College	35	Godman Field Flyers	32
Tennessee State College	87	Philander Smith College	41
Tennessee State College	63	Wiley College	29
Tennessee State College	68	Texas College	28
Tennessee State College	79	Mary Allen Junior College	21
Tennessee State College	62	Texas College	26
Tennessee State College	72	Arkansas State College	43
Tennessee State College	47	Langston University	59
Tennessee State College	44	J. S. Smith University	25
Tennessee State College	65	Lincoln University, Missouri	35
Tennessee State College	68	Kansas City Y.M.C.A.	26
Tennessee State College	37	Philander Smith College	16
Tennessee State College	56	Kentucky State College	45
Tennessee State College	66	Morehouse College	29
Tennessee State College	48	Alabama State College	46
Tennessee State College	56	Wilberforce University	42
Tennessee State College	42	Godman Field Flyers	40
Tennessee State College	48	Kentucky State College	39
Tennessee State College	73	Lincoln University, Missouri	37
Tennessee State College	60	Morehouse College	30
Tennessee State College	69	Alabama State College	30
Tennessee State College	97	Meharry Medical College	32
Tennessee State College	79	Knoxville U.S.O.	38
Tennessee State College	56	Lincoln University, Missouri	31
Tennessee State College	44	Wilberforce University	55
		Kentucky State College	55

*By defeating Langston University in the finals, Tennessee State College won the Southwest Open Tournament at Prairie View, Texas, January 12, 1946.

†Second-place winner in Midwestern Basketball Tournament at Kentucky State College, Frankfort, Kentucky.

GIRLS' BASKETBALL



1946 VARSITY BASKETBALL TEAM

★ ★ ★ ★ ★

1945-1946 BASKETBALL RESULTS

Tennessee State College.....	28	West Virginia State College.....	27
Tennessee State College.....	13	Tuskegee Institute.....	25
Tennessee State College.....	32	Philander Smith College.....	12
Tennessee State College.....	21	Knoxville College.....	25
Tennessee State College.....	22	Arkansas State College.....	20
Tennessee State College.....	21	Alabama State College.....	19
Tennessee State College.....	22	Knoxville College.....	11
Tennessee State College.....	20	Florida A. and M. College.....	23
Tennessee State College.....	25	Alabama State College.....	13
Tennessee State College.....	19	Arkansas State College.....	29
Tennessee State College.....	33	Philander Smith College.....	29

1946 BOYS' AND GIRLS' VARSITY TENNIS TEAM

(Coach Lula S. Bartley is at extreme left in front row)



1946 BOYS' VARSITY TRACK TEAM

(Coach Leon C. Forbes is at extreme left in back row. Carlos Bruce, Henry Holbert, and John Bolden do not appear in picture.)



1946 GIRLS' VARSITY TRACK TEAM

(Coach Jessie E. Abbott is in center of back row)



1946 VARSITY BOXING TEAM

(Coach Shannon D. Little is at extreme left in back row)





1945 Coaching
School Held at
Tennessee State
College
June 11-30, 1945

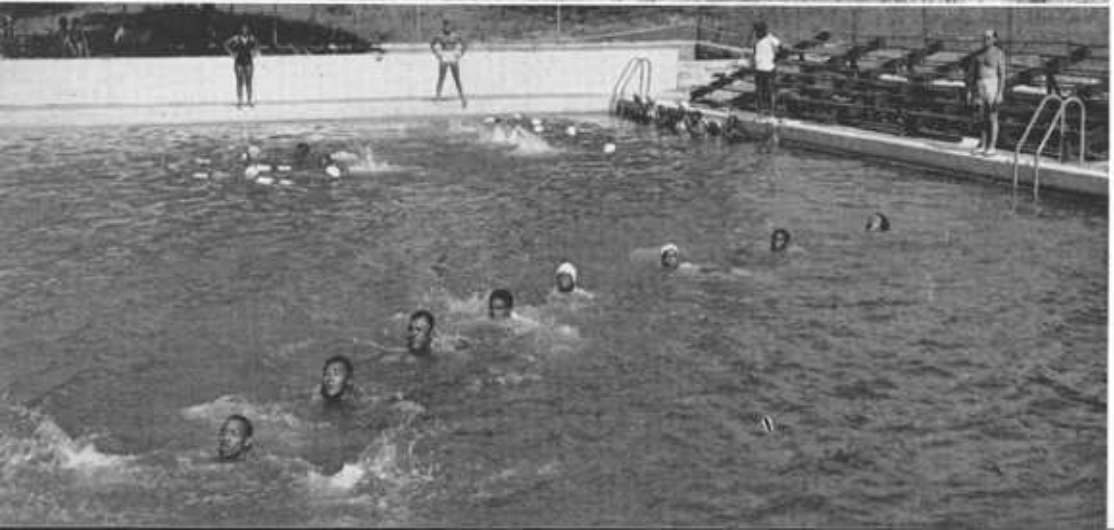


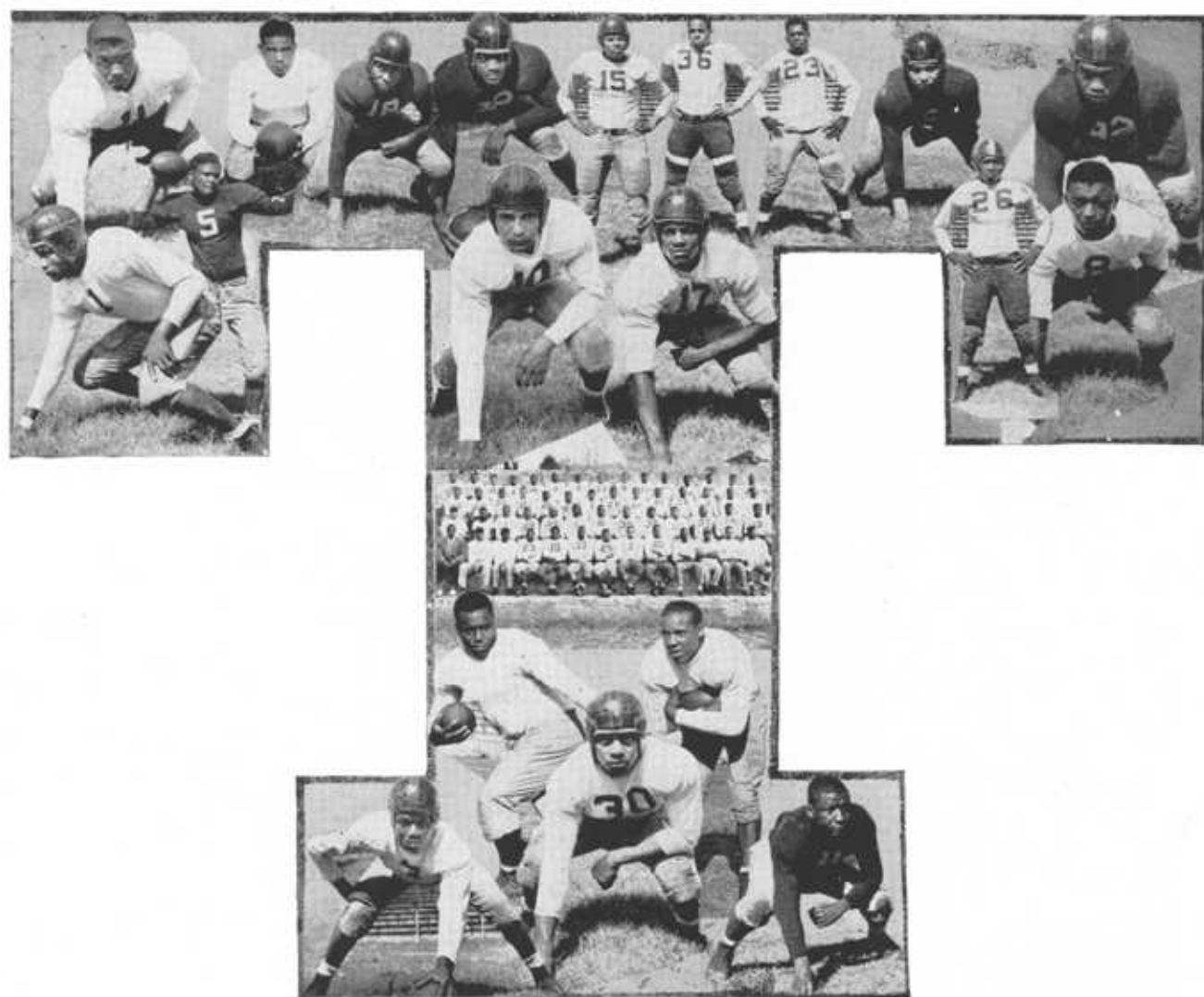
1946 Varsity
Swimming Team

(Coach Thomas E.
Hughes is at extreme
left in back row)



National Aquatic
School Held at
Tennessee State
College
June 18-30, 1945





State "Tigers" Line Up in "T" Formation for Their 1946 Opponents

1946 SCHEDULE

<i>Home</i>		<i>Away</i>	
October 5	Langston University	September 28	Texas College (Place undecided)
October 19	Clark College	October 12	Open
November 2	Florida A. and M. College	October 26	Wilberforce University (At Wilberforce, Ohio)
November 16	Lincoln University, Missouri	November 9	Southern University (At Scotlandville, Louisiana)
November 29	Knoxville College (Thanksgiving—Home-Coming)	November 23	Kentucky State College (At Frankfort, Kentucky)

All home games will begin at 2:00 P.M.

TENNESSEE STATE COLLEGE THEATRE

Activities

TENNESSEE STATE PLAYERS GUILD
LABORATORY THEATRE

CHILDREN'S THEATRE
CHORAL SPEAKING CHOIR



TENNESSEE STATE PLAYERS GUILD

The Tennessee State Players Guild is a student organization of the Tennessee State College Theatre. It is open to students who are majoring and minoring in speech and drama, and for students who are interested in dramatics as an extracurricular activity.

OFFICERS

ROBERT WHYTE	President	INEZ CRUTCHFIELD	Chairman, Play Reading Committee
SINGER BUCHANAN	Vice-President	IRA PEARSON	Business Manager
ODESSA PERRY	Secretary	LORETTA CASTRELL	Publicity Manager
DORIS DOBBS	Assistant Secretary	DOROTHY HERNDON	Chairman, Social Committee
EDNA M. DOZIER	Treasurer	EDNA M. DOZIER	Chairman, Program Committee
THEODORE MCDAVID	Chaplain	MARY E. GREATHOUSE	Chairman, Membership Committee

THEATRE STAFF

THOMAS E. POAG	Director	DOROTHY P. JONES	Supervisor of Costumes and Make-Up
BENTON ADAMS	Technical Director	SINGER BUCHANAN	Stage Manager
LAURA M. AVERITTE	Director of Children's Theatre	DAVID WHITMAN	Stage Car
ALMA DUNN JONES	Director of Choral Speaking Choir	AMELIA DORSE	Theatre Library and Clerk
FRANCES THOMPSON	Stage Decorations		

The Theatre Staff works with each activity of the Tennessee State College Theatre.



THE CHILDRENS' THEATRE

The Children's Theatre is a Laboratory Theatre for students majoring and minoring in speech and drama, and students registered for English 201, Children's Literature. This organization is under the supervision of Miss Laura M. Averitte. The membership consists largely of children of faculty members, and of children living near the campus. Parents of the children are closely associated with the Children's Theatre Staff.

OFFICERS

WILLIAM V. HARPER	<i>President</i>	PATRICIA FLOWERS	<i>Make-Up Mistress</i>
EARL SASSER	<i>Vice-President</i>	HENRY A. KEAN	<i>Property Manager</i>
HELEN DUMAS	<i>Secretary</i>	EARL SASSER	<i>Electrician</i>
DORIS HILL	<i>Assistant Secretary</i>	PEARL GORE	<i>Student Directress</i>
PEARL GORE	<i>Business Manager</i>	HELEN DUMAS	<i>Student Directress</i>
THOMAS DUMAS	<i>Publicity Agent</i>	MARNELLE CROUCH	<i>Pianist</i>
YVONNE SENTER	<i>Wardrobe Mistress</i>	LAURA M. AVERITTE	<i>Director</i>



MR. BENTON A. ADAMS
Reviews Director



DR. THOS. E. POTTS
Executive Director



ABOVE - THE CAST FOR "DOUBLE DOOR" BY ELIZABETH MYFADOLN
CENTER - A SCENE FROM "BEYOND THE HORIZON" BY EUGENE O'NEILL
BELOW - A SCENE FROM "THE SILVER CORD" BY JIMMY HOWARD





DR. DOAG EXPLAINING PLANS TO THE PRODUCTION
STAFF FOR THE 1945-1946 DRAMA SEASON

Productions

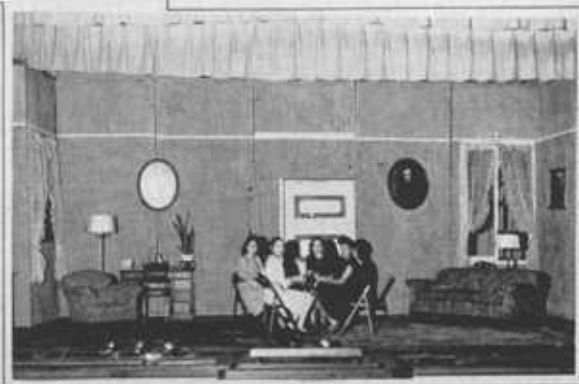


THE STAGE CREW
(STANDING DOWN RIGHT MR. JINGER BUCHANAN
STAGE MANAGER)

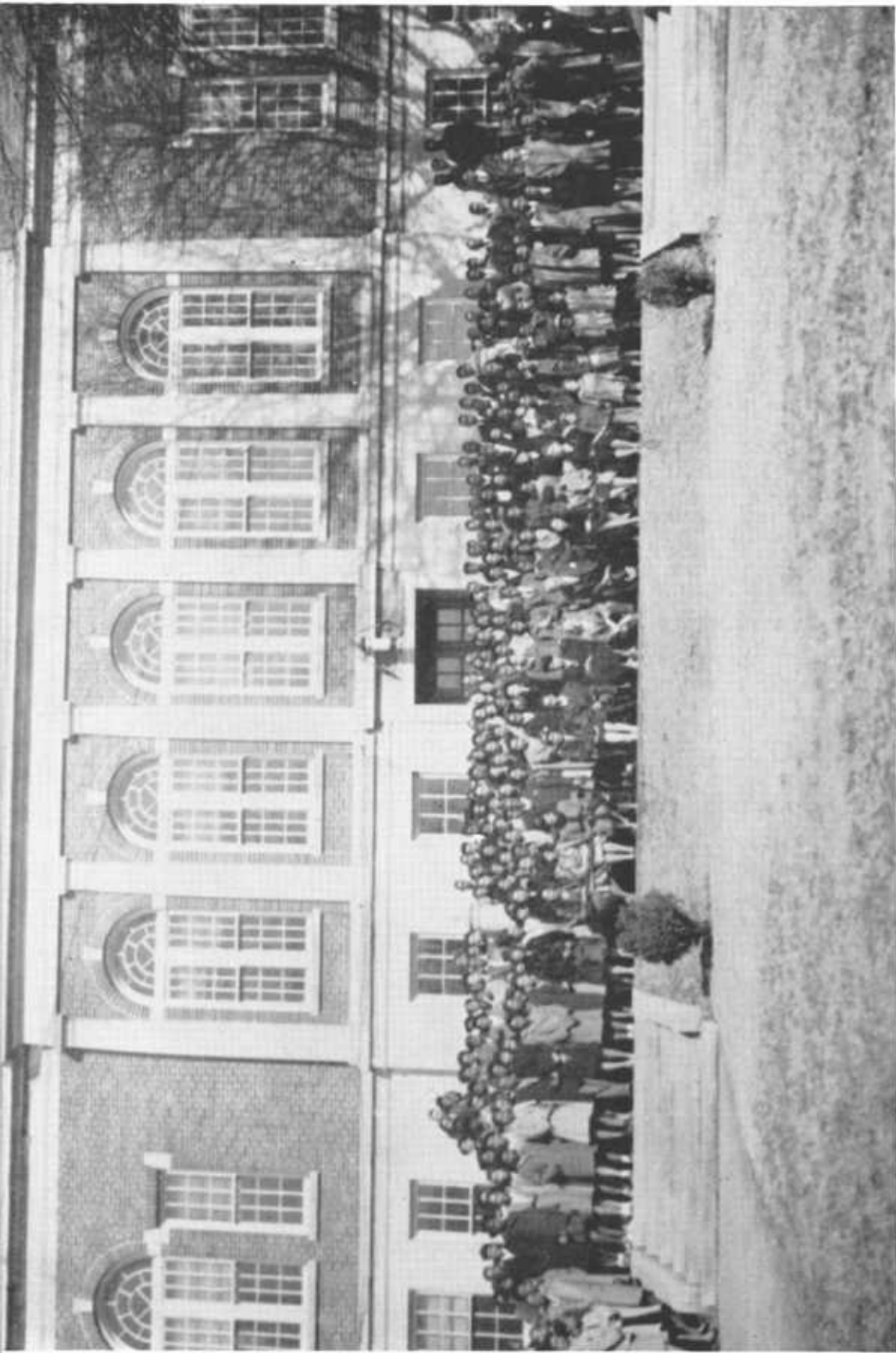


A SCENE FROM MR. WIGGS OF THE CABBAGE PATCH
(STANDING CENTER MISS PEARL MOORE AS MR. WIGGS)

A SCENE FROM "LOW BRIDGE" PRESENTED BY
THE LABORATORY THEATRE



W. J. J.



SUNDAY SCHOOL

Monthly church, weekly prayer, Sunday vesper, and the Sunday School are regular phases of the religious program of the college.

The Sunday School, under the direction of Mr. R. E. Clay, and Dr. G. W. Gore, Jr., is only one of the many opportunities afforded the student to enrich life through religion.

The Sunday School attracts one of the largest audiences of any assembly on the campus.

All organizations, sororities, fraternities, and departmental clubs cooperate with the Sunday School by sponsoring various types of programs throughout the year.

The Sunday School receives the hearty support and cooperation of President Davis, who believes that the inspiration and stimulation thus received will be of inestimable value to students in an effort to evolve satisfying philosophies of life in a changing world.



SUNDAY SCHOOL CABINET

OFFICERS OF SUNDAY SCHOOL

EDWARD MULLINS	<i>Superintendent</i>
THOMAS PINSON	<i>Assistant Superintendent</i>
GENEVA CLAYBOURNE	<i>Secretary</i>
CHARLES COLEMAN	<i>Chairman, Program Committee</i>
RUTH SHARP	<i>Pianist</i>

OFFICERS OF CLASSES

SENIOR

SARAH SWONLAGON	<i>Chairman</i>
MABLE GARNER	<i>Assistant Chairman</i>
GLADYSE SALLEE	<i>Secretary</i>
THELMA BROWN	<i>Assistant Secretary</i>

JUNIOR

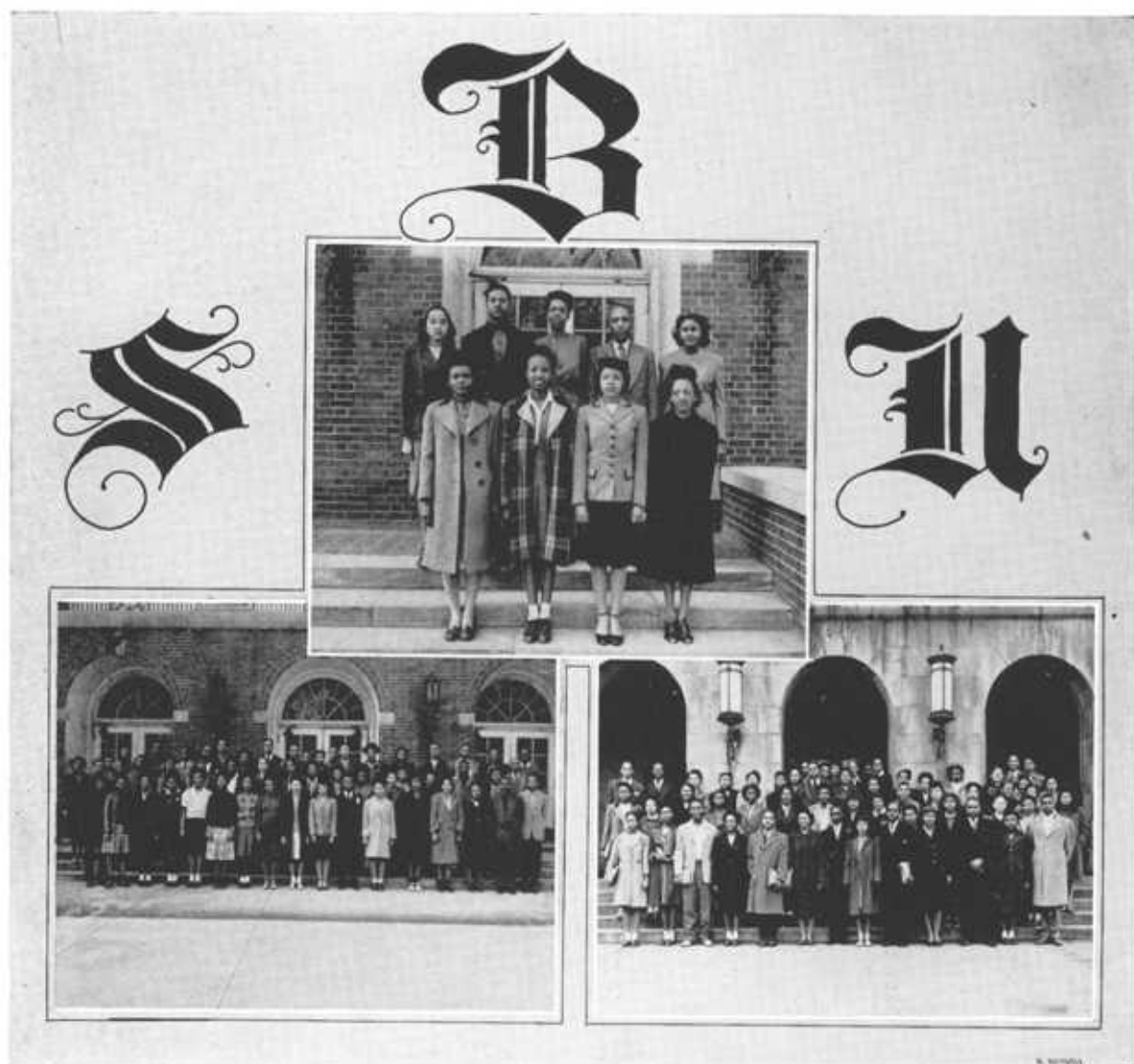
ERNEST MCKINNEY	<i>Chairman</i>
ALVIN MCNEIL	<i>Assistant Chairman</i>
MILDRED SANFORD	<i>Secretary</i>
VARON OWENS	<i>Assistant Secretary</i>

SOPHOMORE

CLEM HOLLOWAY	<i>Chairman</i>
BENJAMIN CRANE	<i>Assistant Chairman</i>
EDNA BROWN	<i>Secretary</i>
HAZEL FLENNOV	<i>Assistant Secretary</i>

FRESHMAN

JEANNINE ALLISON	<i>Chairman</i>
ELIZABETH ROSS	<i>Assistant Chairman</i>
DAVE HENRI FONNEY	<i>Secretary</i>
BETTYE JEAN COLEY	<i>Assistant Secretary</i>



THE BAPTIST STUDENT UNION

The Baptist Student Union is a voluntary religious organization of all Baptist students of the institution. It is the connecting link between the college and the church and seeks to make Christianity collegiate and college life Christian. It is a church centered organization and seeks to promote among all students Christian comradeship, Bible study, prayer, church membership, denominational loyalty, and kingdom advancement.

Although the B. S. U. is a world-wide movement, it is now being organized for the first time on Negro college campuses. The organization at A. and I. State College is the second to serve a Negro college community in America. The outlook for the B. S. U. work among Negroes is very challenging, for it discovers and develops the potential church leadership as it faces real life situations.

ALPHA KAPPA ALPHA SORORITY



On January 16, 1908, in Minor Hall of Howard University the first Greek letter sorority among Negro students in America—Alpha Kappa—was formed. From a single chapter of eight members in 1908, the sorority has grown into a powerful national organization of seventy-two undergraduate chapters and ninety-four graduate chapters and comprises a membership of more than 6,000 carefully situated college women. Alpha Kappa Alpha tends to encourage high scholastic standards, to improve the social and economic status of the race and to promote unity and friendship among college women.

Alpha Psi Chapter was organized at Tennessee A. and I State College on May 13, 1932, and from that time to the present has been outstanding in campus history. Alpha Psi's program for the year includes an annual school project of greeting old and new students coming to the college at the opening of the school year; a pre-Christmas program to spread good will to fellow students prior to the Christmas holidays; a penny bazaar to raise funds to help needy families in the vicinity of the college; Founder's Day celebration at which time outstanding members of the organization and the race are presented to the students of the college and the citizens of Nashville.

Alpha Psi's representation in Alpha Kappa Mu scholastic society, at present, includes Ruby Prigmore and Gladys Williams.

Dorothy Harris was chosen queen of Alpha Phi Alpha Fraternity for 1945-46.

The officers of Alpha Psi for 1945-46 are: Basileus, Nell Armstrong; Anti-Basileus, Odessa Perry; Grammateus, Juanita Ryan; Epistoleus, Frances Leavelle; Reporter, Callie Lentz; Tamiochus, Marguerite Bass; Sentinel, Mae Audrey Leaven; Hodegus, Emma Grant; Parliamentarian, Laurretta Cantrell; and Dean of Pledges, Cathyne Moody.

Alpha Psi plays a vital part in the campus life of A. and I State College and is merely a link in the huge chain of the Alpha Kappa Alpha Sorority which strives to uphold ethical standards, finer womanhood, scholarship, and service to the Negro race.

IVY LEAF CLUB



OFFICERS

HARRIET JOHNSON	President	DORIS DOBBS	Secretary
MAGEL SMITH	Vice-President	ALBERTINE WINSTON	Assistant Secretary
KATHERINE GUION	Treasurer		

MEMBERS

VESTA BARNET	ELIA BLAKE	PEARLINE STEWART	HELEN HOLMES
TOMMYE SCOTT	MARY HOPKINS	DOROTHY MCKEE	VIVIAN REED
DOROTHY BROOKS	RUTH COLLINS	FANNIE PULLEY	ADDIE PRIMM
ANNE GARDNER	MILDRED CRAWFORD	ALTA KING	LOTTIE DAVIS
NETTIE DUMAS	ARLETTE MACLIN	EDNA WALKER	RUTH BRAYBOY
EDWINA WELLS	PAULINE PACE	IOLA TURNER	DOROTHY HERNDON
JESSIE HERNDON	MARY E. FLAGG		MARGARET CRUCE

The Ivy Leaf Club of Alpha Kappa Alpha Sorority, being one of the most outstanding clubs on the campus, contributes to the cultural and social life of the campus by presenting their best talent at Sunday School, Quiet Hour, and Vesper, and other activities.

The Ivy Leaf Club is represented in various departmental activities.

DELTA SIGMA THETA SORORITY

ALPHA CHI CHAPTER



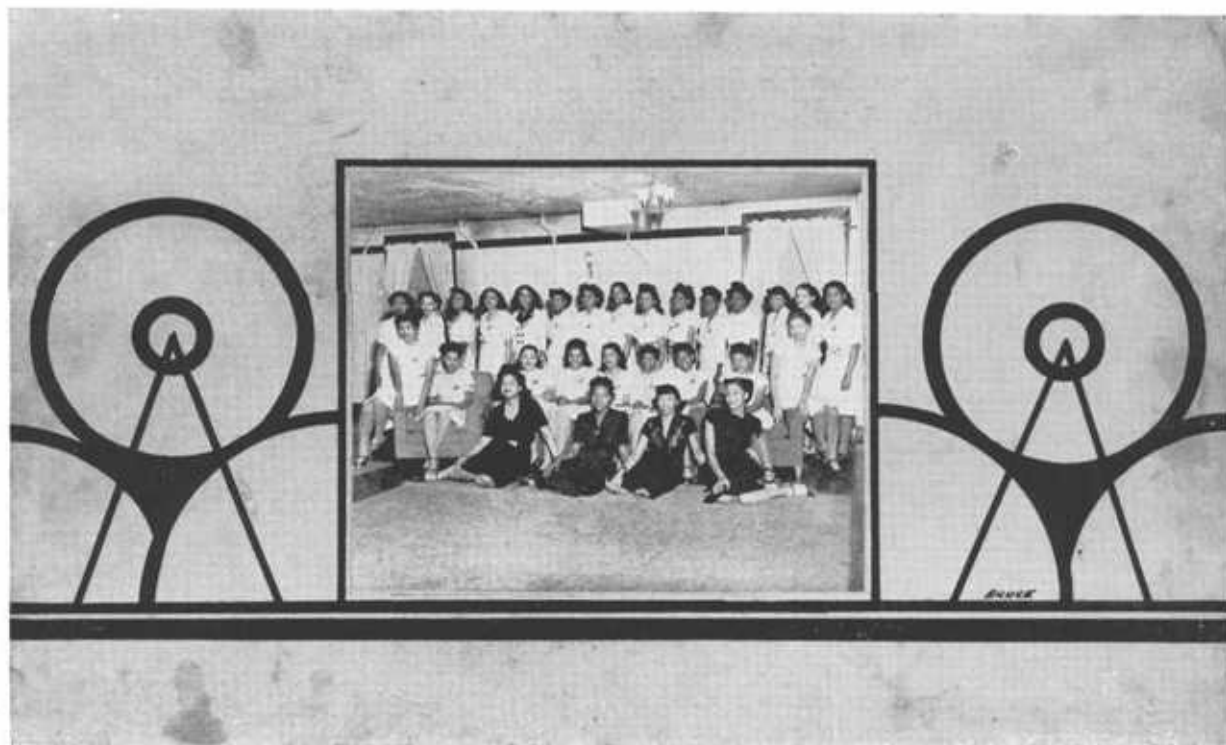
*Founded at Howard University in 1913
Established at A. and I. State College in 1936*

In the thirty-three years of its existence Delta Sigma Theta Sorority has grown steadily until there are now more than one hundred forty chapters whose hundreds of members, pledged to the highest ideals of womanhood, of scholarship, and service, are doing honor to Delta through their splendid achievements.

Here at A. and I. during its eight years of existence, Alpha Chi has followed the general pattern set by its national body. It has aided organizations in promoting the economic and social well-being of Negroes, shared in improving the morale of our soldiers during the last world conflict, contributed to the cultural and spiritual tone of the campus by sponsoring Sunday School, Quiet Hour, Vesper, and chapel programs, as well as cosponsoring an annual jabberwock that has as an objective the raising of funds for scholarships for worthy students, and has furnished such social programs as teas for freshmen and new women students, and dances for the general student body.

Alphi Chi has had among its members young women who are active in a number of campus organizations and have had the honor of having "Miss Tennessee State" of 1945-1946 and two of her four attendants on her roster.

PYRAMID CLUB



The Pyramid Club of Alpha Chi Chapter of Delta Sigma Theta Sorority has striven during the school year 1945-1946 to remain according to its tradition a credit to its school, finer womanhood, and to Delta Sigma Theta Sorority.

The Pyramid Club has participated in various activities, among these being a special quiet hour program paying tribute to mothers.

We strive for scholarship, and many members of the club have appeared on the honor rolls during the year.

MOTTO

"Knowledge is the torch of wisdom."

ZETA PHI BETA SORORITY



OFFICERS

HENRIETTA RUCKS *Basileus*
 THERESA FENNIE *Dean of Pledges*
 CATHERINE DORSEY VALETINE *Secretary*
 ICY M. DANIELS GREENE *Assistant Secretary*
 EUGENIA PORTER TURNER *Treasurer*
 YVONNE WINTERS *Custodian*

VERA FOWLER *Chaplain*
 LAURA PEARL TEASLEY *Sergeant at Arms*
 WILMA LIGGETT *Reporter*
 JOAN ROMBY WILLIAMS *Typist*
 MRS. MARIE BROOKS STRANGE *Adviser*
 MRS. ANNIE G. SASSER *Adviser*

MEMBERS

LILLIAN BARBOUR
 HAZEL BLAINE
 THELMA BROWNE
 VERNELL CHATMAN

LAURA FRAZIER
 JUANITA HAYES THOMAS
 WILLIE KINNARD
 JENNIE MITCHELL

OPHELIA PITT
 ROSA STEWART
 ROSALIND THOMAS
 MELBA TOMS BROWN

RUTH WELCH
 ROSABEL EVANS
 NELLIE JORDAN

Epsilon Alpha Chapter of Zeta Phi Beta Sorority is proud of its growth and achievements on Tennessee State College campus. This chapter was organized on Tennessee State College campus April 15, 1933, with six charter members. Since then its membership has grown each year to include outstanding young women.

From the ranks of Epsilon Alpha Chapter come such representative personalities as: Soror Henrietta Rucks, Basileus of Epsilon Alpha Chapter, soloist of the Concert Singers, Choir, and Ladies' Ensemble, member of Delta Phi Delta Journalistic Honor Society, music director of the Baptist Student Union, corresponding secretary of the Future Business Leaders of America; Soror Yvonne Winters, outstanding in the fields of English and drama, member of the Players Guild; Soror Melba Toms Brown, member of the Concert Singers, Choir, and Ladies' Ensemble, member of Delta Phi Delta Journalistic Honor Society, talented dancer, member of Iota Phi Lambda Honor Society; Soror Joan Romby Williams, contralto soloist of the Concert Singers, Choir, and Ladies' Ensemble, member of the Future Business Leaders of America, Baptist Student Union; Soror Annie G. Sasser, Basileus of the Nashville Chapter of Zeta, instructor in mathematics; Soror Marie Brook Strange, concert pianist and organist, head of the music department, director of College Choir, and famous Concert Singers.

ARCHONIAN CLUB OF ZETA PHI BETA SORORITY



OFFICERS

CAREY BLACKWELL	President	AMELIA DORSE	Reporter
DORIS KIMBLE	Secretary	THERESA FENNIE	Dean of Pledges
THEMETRIS JONES	Treasurer	MRS. MARIE BROOKS STRANGE	Adviser
MRS. ANNIE G. SASSER		Adviser	

MEMBERS

MAYME GILCHRIST
ROSALYN MARVELS

LUCILLE PEGRAM
DOROTHY SIMMONS

GENOA STOVER
MARGAREE WILLIAMSON

The Archonian Club of the Zeta Phi Beta Sorority was founded on the campus of Howard University for the purpose of unifying women who aspire to become members of the Zeta Phi Beta Sorority.

Since that time the Archonian Club has played an active part in all activities to promote "Finer Womanhood" on many college campuses.

SIGMA GAMMA RHO SORORITY

OFFICERS

MATTIE E. CHESSE
Basileus

MYRTLE S. RUSSELL
Anti-Basileus

LEAH STOCKARD WOOD
Grammateus

ALBERTA HORNBEAK
Anti-Grammateus

JEANETTA YOUNG
Tamiochus

MRS. M. M. BROWN
Adviser

MRS. H. G. WILHOITE
Adviser



OFFICERS

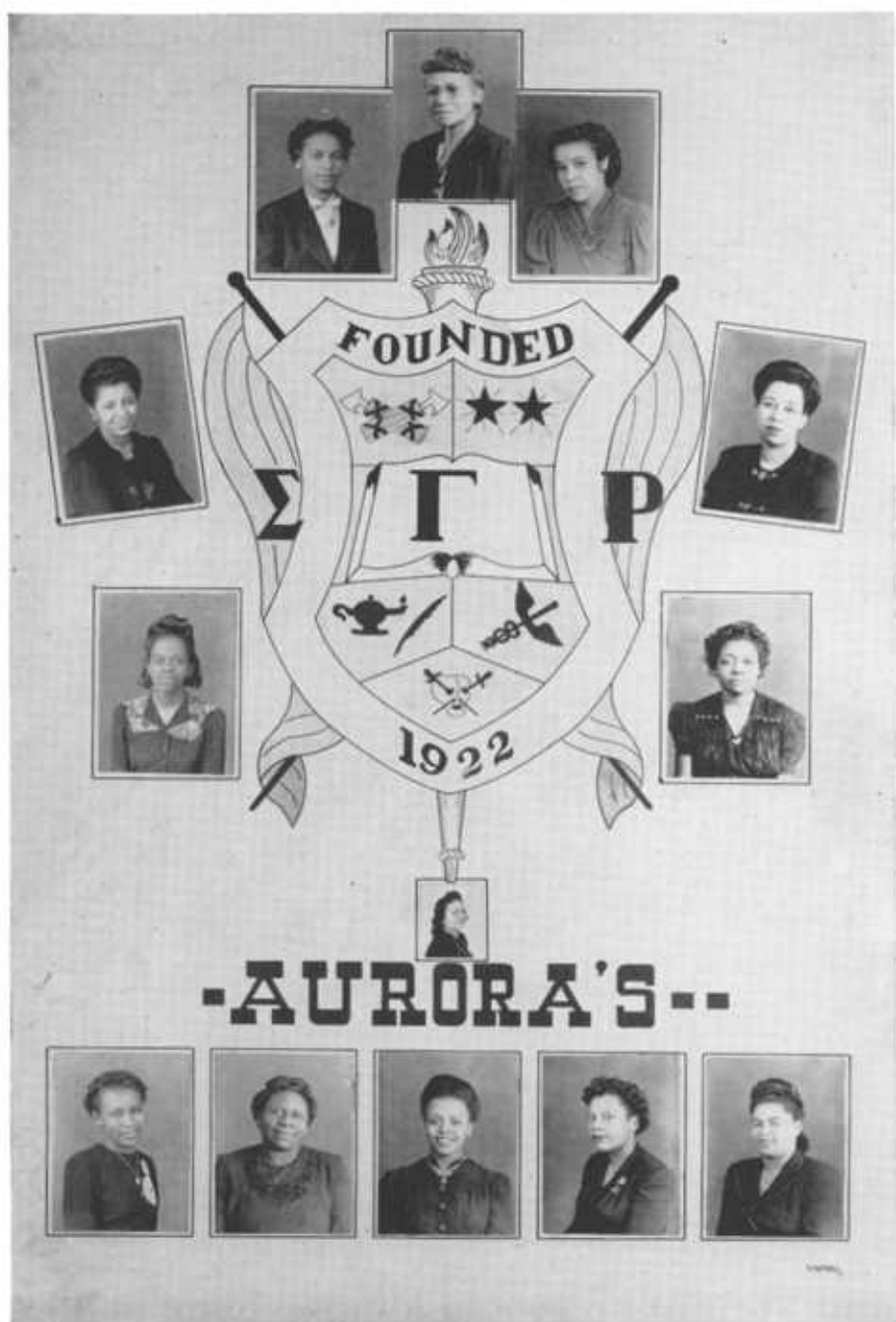
MAGGIE KIRKENDALL
President

MAGGIE HOUSE
Vice-President

ERNESTINE SHAW
Secretary

CELIA WATKINS
Assistant Secretary

JESSIE SHIPP
Treasurer



Reading left to right: Mattie E. Chess, Mrs. M. M. Brown, Mrs. H. G. Wilhoite, Mrs. Myrtle S. Russell, Mrs. Siddie Carter, Jeanetta Young, Alberta Hornbeak, center, Mrs. Leah Stockard Wood.

THE AURORA'S

Reading left to right: Maggie Kirkendall, Maggie House, Celia Watkins, Ernestine Shaw, and Jessie Shipp.

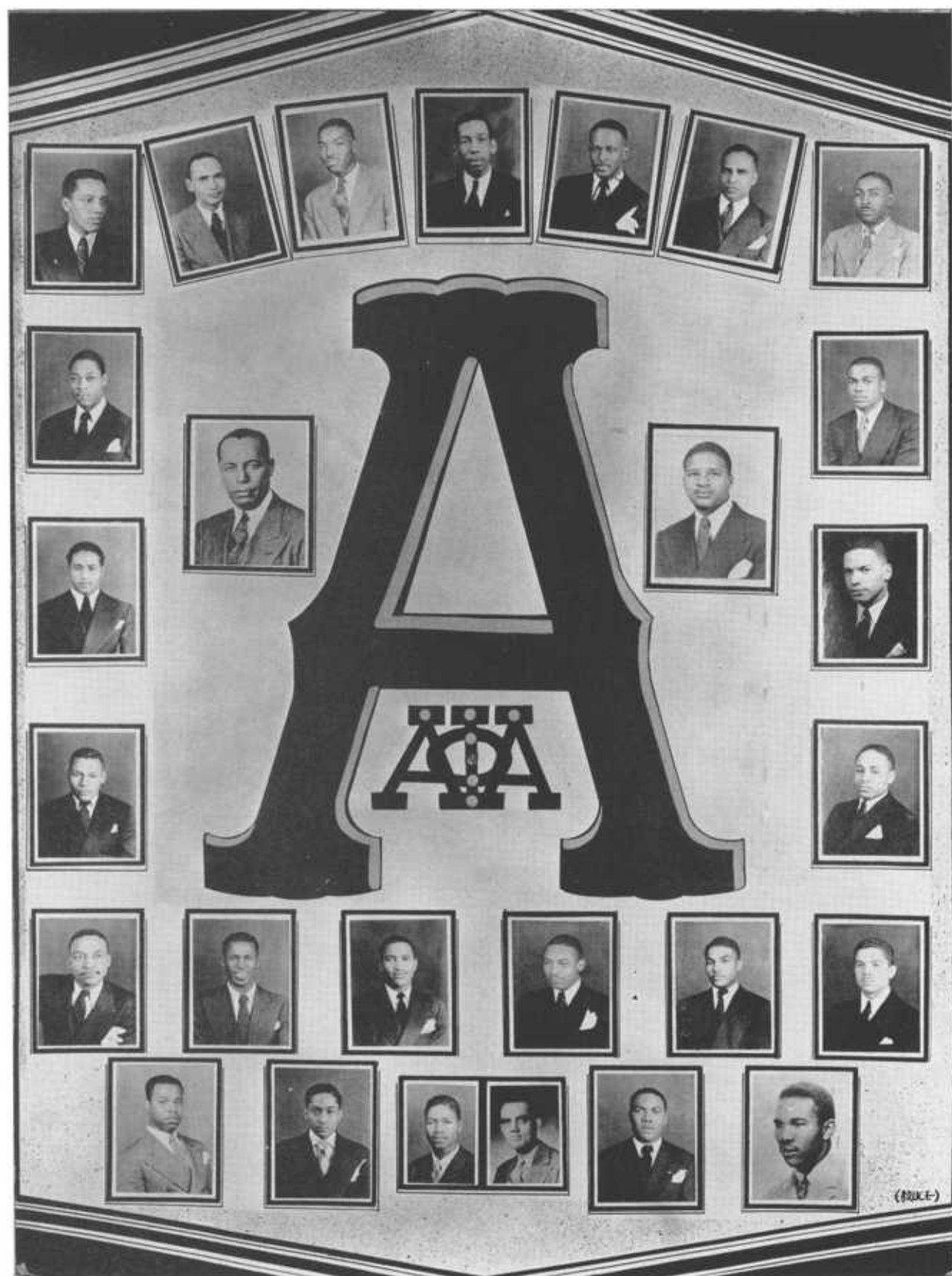
More than a decade ago Alpha Beta Chapter of Sigma Gamma Rho Sorority marked the beginning of sorority life on Tennessee State College campus. Since that time it has served as a beacon light to guide young women to heights of great attainment in both character and scholarship.

Out of this chapter have gone many young women who are now outstanding in many fields of worth-while endeavor. Alpha Beta is represented in all of the outstanding organizations of the campus.

The Aurora Club is composed of young women who have pledged themselves to strive to live up to the high standards of moral character and scholarship which are prerequisites to becoming a member of Sigma Gamma Rho Sorority.

ALPHA PHI ALPHA FRATERNITY

BETA OMICRON CHAPTER



ALPHA PHI ALPHA FRATERNITY, INC.

BETA OMICRON CHAPTER

On the campus of Cornell University, Ithaca, New York, in the school year of 1905-1906, Alpha Phi Alpha, Inc., the first Greek fraternity, was founded. Henry Arthur Callis and six other male students distributed in the various colleges and universities conceived the idea of the value of maintaining more intimate contact with fellow students than afforded by classroom association, of promoting high scholarship and of stressing outstanding achievement in all fields of endeavor. In keeping with these ideals the fraternity sponsors yearly "Go to High School—Go to College" movement and Education for Citizenship campaign.

Beta Omicron Chapter was established May 12, 1934, at Tennessee State College. With the aims of the organization foremost in our minds we have maintained high scholarship, contributed to local and national movements, and displayed leadership ability on the campus and in the city. Beta Omicron is represented in Alpha Kappa Mu Honor Society, Beta Kappa Chi Honor Scientific Society, and all other scholastic organizations at the college. With our motto forever before us, "First of all, servants of all, we shall transcend all," we shall maintain the noble principles of the fraternity.

OFFICERS

EDWARD L. MULLINS.....	Memphis, Tennessee	CARLOS C. BRUCE.....	Owensboro, Kentucky
<i>President</i>		<i>Corresponding Secretary</i>	
BENJAMIN F. SAULTER, JR.	Cincinnati, Ohio	WALTER G. MCMILLAN.....	Mobile, Alabama
<i>Vice-President</i>		<i>Treasurer</i>	
THOMAS H. PINSON.....	Memphis, Tennessee	CLEVELAND C. FISHER.....	Memphis, Tennessee
<i>Secretary</i>		<i>Adviser to Sphinx</i>	
JULIUS E. HIGGINS.....	East St. Louis, Missouri		
<i>Sergeant at Arms</i>			

ADVISERS

HUGH M. SMYTHE.....	Pittsburgh, Pennsylvania	MYRON B. TOWNS.....	Atlanta, Georgia
RALEIGH A. WILSON.....	Nashville, Tennessee	CLINTON D. CROOKS.....	Winchester, Kentucky
GEORGE W. GORE, JR.....	Nashville, Tennessee	LEWIS R. HOLLAND.....	Roanoke, Virginia
HENRY A. KEAN.....	Louisville, Kentucky	VERNON E. MCCAIN.....	Ardmore, Oklahoma
FREDERICK J. D. MCKINNEY.....	Richmond, Indiana		

MEMBERS

WILLIAM BASS.....	New York, New York	SAMUEL L. HILLIARD.....	McKenzie, Tennessee
CATO EDMONDSON.....	Nashville, Tennessee	FREDERICK IRBY.....	Mobile, Alabama
ARTHUR E. HORNE.....	Memphis, Tennessee	WILEY LEONARD.....	Fairfield, Alabama
FINLEY JORDAN.....	Nashville, Tennessee	JOHN A. MCLEAN, JR.....	Chapel Hill, Tennessee
JOSEPH R. MCCLURE.....	Pulaski, Tennessee	ROY OEVRTON, JR.....	Clarksville, Tennessee
THURMAN NORTHCROSS.....	Memphis, Tennessee	WILLIAM POLK.....	Nashville, Tennessee
IRA D. PEARSON.....	Memphis, Tennessee	EDWARD W. REED.....	Birmingham, Alabama
SINGER BUCHANAN.....	Fayetteville, Tennessee	HARVEY SIMS.....	Galveston, Texas
SAMUEL R. WHITMAN.....	Shelbyville, Tennessee		

THE SPHINX CLUB

OF ALPHA PHI ALPHA FRATERNITY, INC.



OFFICERS

WILLIAM JOHNSON	<i>President</i>	JACK FLAGIN	<i>Treasurer</i>
WILLIAM TOWNSEND	<i>Vice-President</i>	CLEM HOLLOWAY	<i>Chaplain</i>
RALPH MULLINS, JR.	<i>Secretary</i>	WILLIAM SMITH	<i>Sergeant at Arms</i>
ALVIN SHARPE	<i>Assistant Secretary</i>	EUGENE WASHINGTON	<i>Reporter</i>
GILBERT MASON			<i>Parliamentarian</i>

MEMBERS

JOSHUA GRIDER
HENRY HOLBERT

JOHN JORDAN
CLIFFORD LAWSON
ELMER MATTHEWS

EDWARD ROUSE
DAVID WHITMAN

The Great of Egypt Sphinx has been one of the seven wonders of the world for centuries.

The men who compose the Sphinx Club of Beta Omicron Chapter of Alpha Phi Alpha Fraternity, Inc., are likewise aspiring to do great wonders for the world.

Our Sphinx Club is made up of men who realize what the firm powers of life are. These men have faith which is the foundation of universal life. Without faith the least obstacle could not be overcome.

We have the courage to go forward, ambition to enter the difficult tasks of life and the confidence to attain the supremacy of universal brotherhood.

The Sphinx Club is striving to produce more men with such latent potentialities that their contributions to the efforts of men who are striving to do wonders for the world will be no mere dream, but a reality.

KAPPA ALPHA PSI FRATERNITY

ALPHA THETA CHAPTER

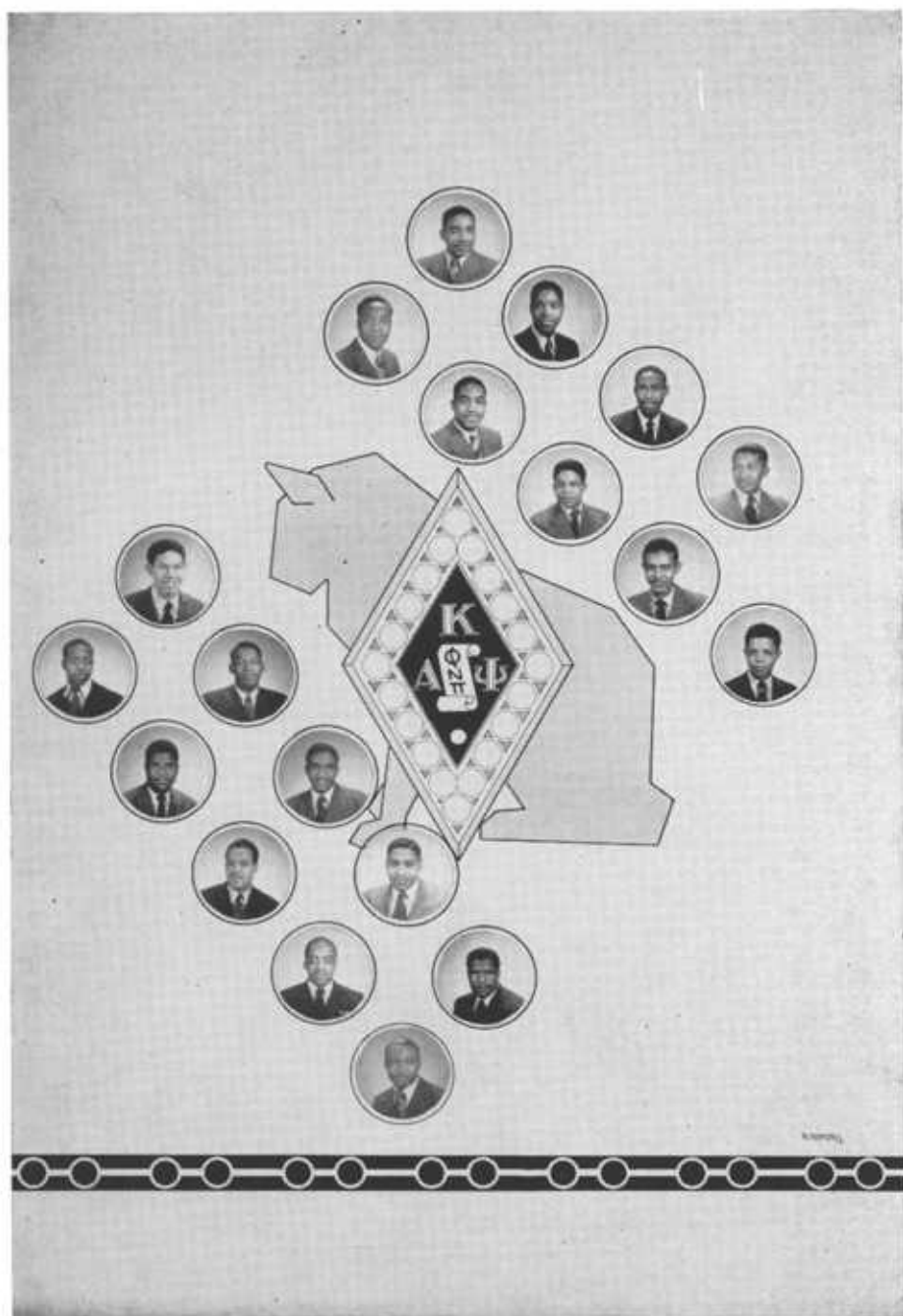
OFFICERS

- R. EUGENE PINCHAM
Polemarch
- KENNETH LEON McVOY
Vice-Polemarch
- VINCENT AUGUSTUS
BUNCH
Keeper of Records
- SAMUEL H. GREGORY
Keeper of Exchequer
- ISRAEL H. JONES
Strategus
- LONNIE E. EDMONDSON
Lieutenant Strategus
- JOHN A. GREGORY
Dean of Pledges
- SPENCER DAVIS
Chaplain
- HAROLD SMITH, JR.
Historian
- BENNIE M. BATTS
Journalist



MEMBERS

- SMITH ROGERS, JR.
BOID BUIE
- RAVID F. JORDAN
- ROBERT WHYTE
- WILLIAM S. EADDY
- RALPH J. PULLEY
- HOMER WHEATON
- ANDREW BOND
- BRANDON BARTON
- VALSER LEE



Kappa Alpha Psi Fraternity was founded in 1911 at Indiana University. Kappa Alpha Psi aims to make college life fruitful and happy, and the long span of years after college rich and sweet in memories of college days, in the comforts which come from contacts with brothers in the bond, and in the happy prospects of faithful comrades to the end.

The fundamental purpose of Kappa Alpha Psi is achievement.

Alpha Theta Chapter of Kappa Alpha Psi Fraternity was established at Tennessee State College in 1931, and since that time has proved to be one of the outstanding organizations on the campus.

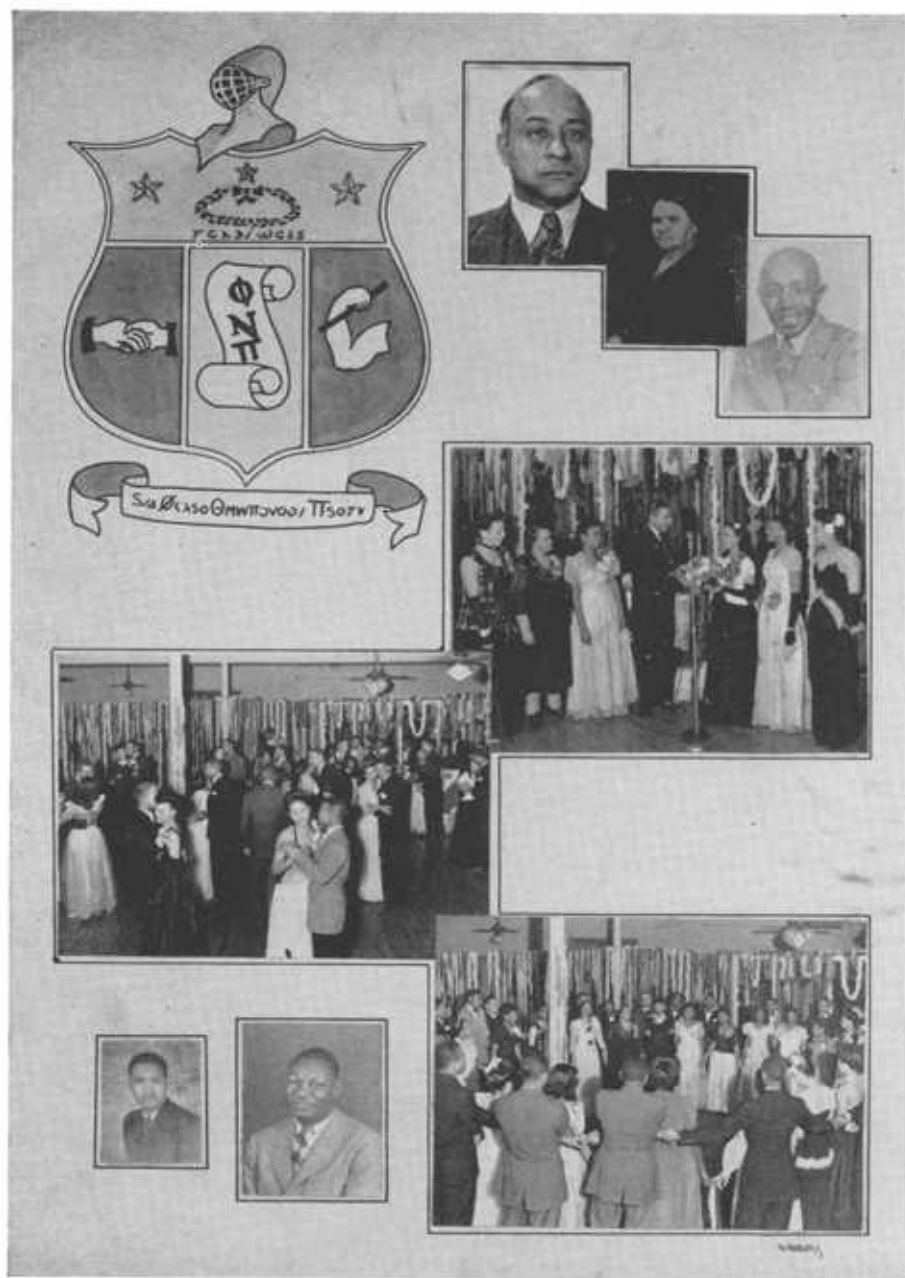
Kappa features at the college include Sunday School, Vesper, and Quiet Hour programs, Kappa Kountry Karnival, and the annual Spring Prom, a spring event de luxe.

ADVISORY COUNCIL

Professor Merl R. Eppse, Chairman; Professors W. A. Flowers, N. A. McAlpin, H. B. Crouch, and Messrs. S. D. Little, G. Sherill.

KAPPA ALPHA PSI FRATERNITY

ALPHA THETA CHAPTER



Reading downward: PROFESSOR MERL R. EPPSE, Adviser; MRS. JANIE ELLIOT, Mother of Alpha Theta Chapter; PROFESSOR W. H. BUTLER, Co-Adviser. Scenes from the Kats' Valentine Sweetheart Dance. Bottom left: MESSRS. J. A. WELCH AND S. D. LITTLE, Co-Advisers.

THE SCROLLERS CLUB



Above, seated, left to right: JOHN CALVER, ALGIE OLDHAM, JAMES HUDSON, CARLTON McLEMORE, CARL COLEY, ALBERT HUTCHINS, WILLIAM LEAVELLE, ALBERT BROADNAX, HUGH PINCHAM. Standing: THOMAS SWIFT, LEXIE CUNNINGHAM, McCLENDON HAYES, ESTILL COVINGTON, MELVIN LAWS, JOHN JENKINS, ISAAC WHYTE, TILLMAN PAYNE, LLOYD HARDIN, HUGHLAND HEARD. Other members include ROBERT ANDERSON, JAKE BALTON, WALTER EPPSE, CHARLES ELLIAS, ARTHUR GILBERT, CARL HELEM, WILLIAM JACKSON, CHARLES MARTIN, WILLIE McMURRAY, LEONARD MORTON, LEONARD PEOPLES, THOMAS PILLOW, CHARLES RATCLIFF, AND NATHANIEL TAYLOR.

OFFICERS

MELVIN LAWS	<i>President</i>	HUGH PINCHAM	<i>Assistant Secretary</i>
WILLIAM LEAVELLE	<i>Vice-President</i>	CHARLES MARTIN	<i>Treasurer</i>
CARL COLEY	<i>Secretary</i>	NATHANIEL TAYLOR	<i>Sergeant at Arms</i>

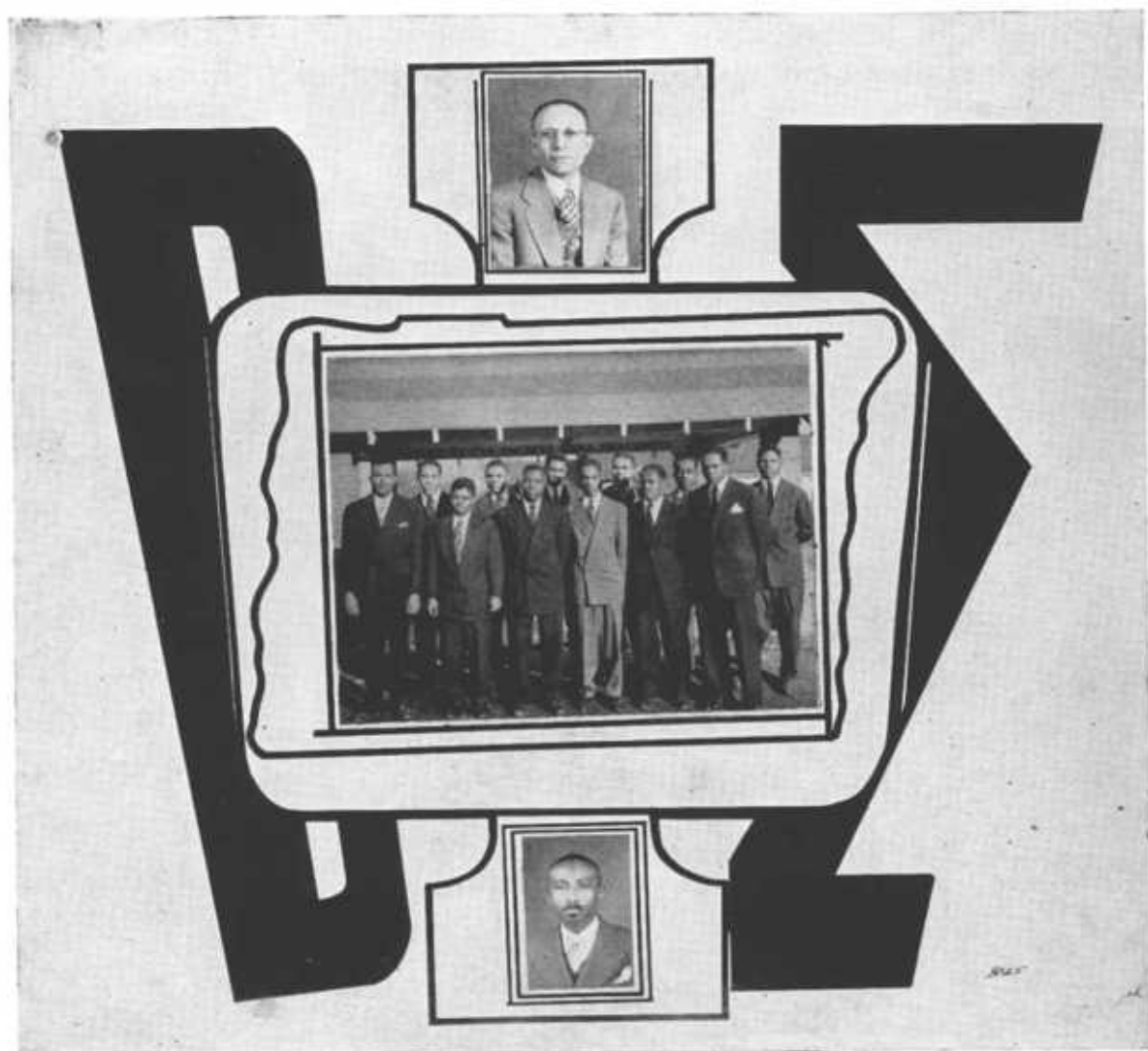
The Scrollers Club, which is an integral part of Kappa Alpha Psi Fraternity, was founded on the campus of Ohio State University, May 15, 1919, for the purpose of unifying the men who aspire to the achievement that Kappa Alpha Psi offers. Since that time each undergraduate chapter of Kappa Alpha Psi has had its own Scrollers Club.

Since its inception the Scrollers Club has distinguished itself particularly in music, art, athletics, and scholarship.

Fifteen different cities in nine states give the present Scrollers Club its roster of thirty-three members.

Confident that the fair name of the Scrollers will not suffer because of us, we sincerely believe that others to come will aspire to exceed.

PHI BETA SIGMA FRATERNITY



OFFICERS

JERONE O. AULS	President	DEWEY WATKINS	Vice-President
HERSCHAL WOODS	Secretary	JOHN MARTIN	Assistant Secretary
JOHN FLIPPINS	Treasurer	ULYSSES MCPHERSON	Dean of Pledges
JOHN BOLDEN			Chaplain

ADVISERS

PROFESSOR ALGER V. BOSWELL, DR. EARL L. SASSER, MR. ROBERT GAINES

MEMBERS

JOHN STEPHENS	ALAN LOCHIE	JAMES WILLIAMSON	LOUIS ROBERSON	SHIRLEY SHOCKLEY
COLLIER WOODS	JAMES COOKE	SETH MITCHELL	JAMES WALKER	DONALD BENTLEY

In the month of January, 1914, on the campus of Howard University, three energetic young men founded the Phi Beta Sigma Fraternity.

The Zeta Alpha Chapter was founded by Brothers Alger V. Boswell and Chesler Owens, May 31, 1931, on the campus of Tennessee State College. The Fraternity has for its motto, "Culture for Service, Service for Humanity." Its slogan is, "Bigger and Better Business for Negroes."

The yearly program outline consists of: 1. Acquaintance program for freshmen and new students. 2. Sunday School and Quiet Hour. 3. George Washington Carver Benefit Fund Dance. 4. Vesper services celebrating Bigger and Better Business for Negroes. 5. Participation in all intramural programs. 6. Annual Spring Dance, the climax of the year's activities.

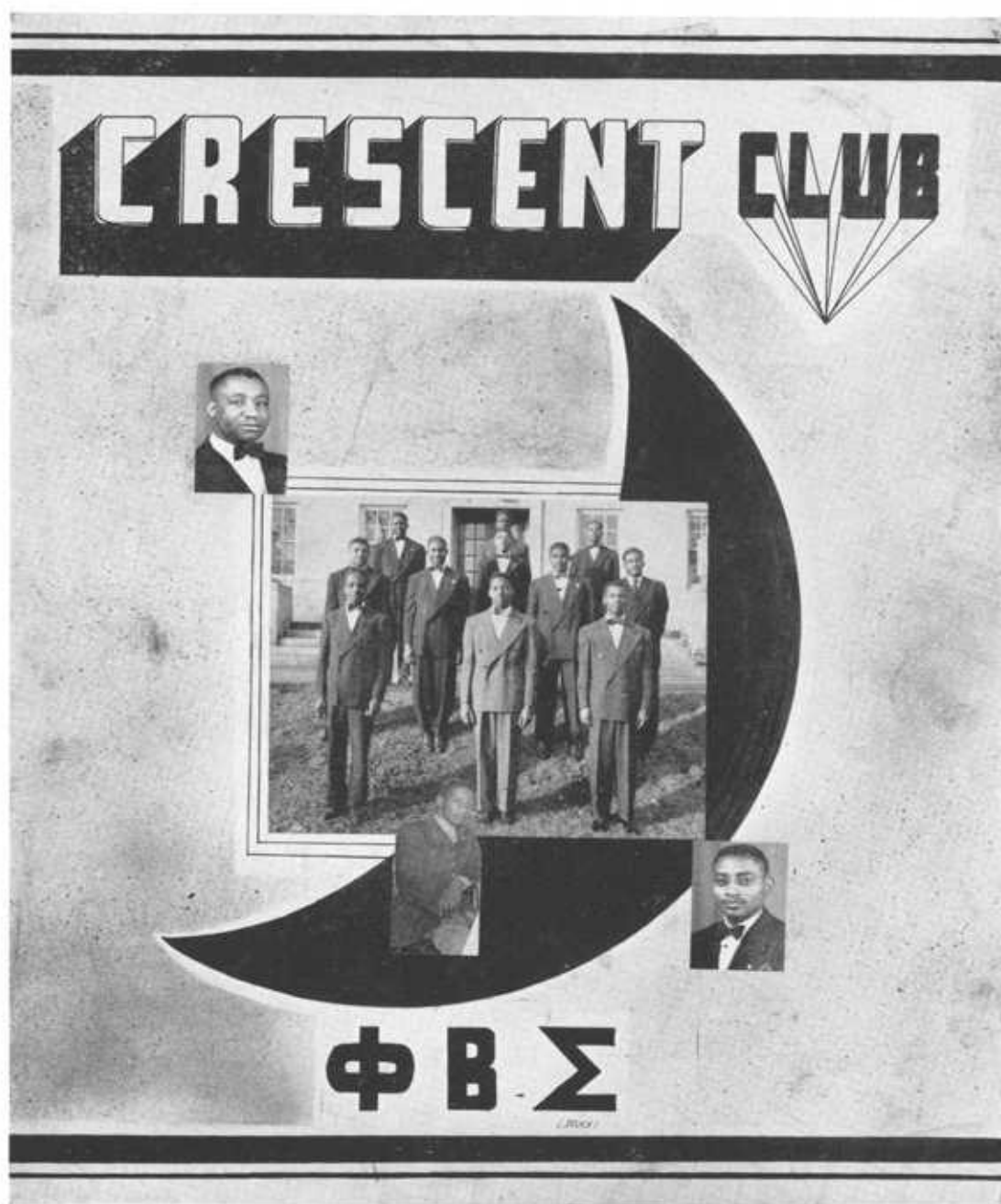


Zeta Alpha Chapter of Phi Beta Sigma Fraternity and Crescent Club participate in all phases of the college's extracurricular activities, namely, football, basketball, track, swimming, boxing, College Choir, and the Players Guild.

FOOTBALL: John (Popsicle) Bolden, all Midwestern guard; Cornelius Jones, varsity back-field star; Ulysses McPherson, varsity center; Ernest Franklin, reserve guard.

BASKETBALL: The intramural basketball squad—Newton McCravy, James Hamlet, Williams Edwards, Dewey Watkins, Percy Hall, John Yarbrough, Norman Pritchett, Charley Brooks, Cornelius Jones, assistant coach; Ulysses McPherson, coach. In regular season play we lost to the Independents and Mad Magicians while winning from the Kappas, Omegas, and Alphas.

CRESCENT CLUB



OFFICERS

ALVIN McNEIL	<i>President</i>	EARNEST FRANKLIN	<i>Assistant Secretary</i>
CURTIS MOMAN	<i>Vice-President</i>	OSCAR F. SMITH	<i>Treasurer</i>
NEWTON McCRAVY	<i>Secretary</i>	PERCY HALL	<i>Chaplain</i>
WILLIAM WINROW	<i>Assistant to Dean of Pledges</i>		

MEMBERS

LESLIE BOWMAN	PERCY HALL	ALVIN J. McNEIL	JESSE ROBERSON
CHARLEY BROOKS	JAMES HAMLETT	BURFORD MITCHELL	OSCAR F. SMITH, II
ABNER DEBERRY	CORNELIUS JONES	CURTIS MOMAN	LUCIOUS WASHINGTON
HENRY DENTON	ANDREW LANKFORD	NORMAN PRITCHETT	WILLIAM WINROW
WILLIAM EDWARDS	NEWTON McCRAVY	PHILLIP W. REED	JOHN YARBROUGH

The chief endeavor of the Crescent Club of Phi Beta Sigma Fraternity, Incorporated, is the promotion of scholarship, service, friendship, and understanding of brotherhood with all men.

OMEGA PSI PHI FRATERNITY



OMEGA PSI PHI FRATERNITY

Rho Psi Chapter of Omega Psi Phi Fraternity was founded April 12, 1930, and was chartered in 1931 upon the cardinal principles of which all Omega men stand for: manhood, uplift, scholarship, and perseverance.

Now that the victory has been achieved and peace again is about to be restored to the world, Rho Psi is happy to welcome back those brothers who through perseverance and manhood have faced the horrors of battle and have so wisely re-entered school to strive toward that greater victory, success.

OFFICERS

CHARLES J. SMITH Hampton Institute, Virginia
Basileus, Junior, History and Social Science

HENRY J. GILMORE Valdosta, Georgia
Vice-Basileus, Senior, Physical Education

MARION B. SMITHSON Nashville, Tennessee
Keeper of Records and Seal, Senior, History and Social Science

GEORGE L. STONE Louisville, Kentucky
Keeper of Finance, Junior, Chemistry

COLERIDGE L. BREWER Muncie, Indiana
Neophyte Commandant, Junior, Engineering

ROBERT E. BOYD Clarksville, Tennessee
Chaplain, Junior, Chemistry

CHARLES H. COLEMAN Springfield, Massachusetts
Chapter Editor, Senior, Natural Sciences

WALTER W. GIBSON Chicago, Illinois
Director of Music, Senior, Business Administration

RICHARD A. CROWE Franklin, Indiana
Director of Athletics, Sophomore, Physical Education and Mathematics

MEMBERS

CHARLES T. BRANDON Huntsville, Alabama
Senior, Pre-Law

EUGENE CARUTHERS Nashville, Tennessee
Senior, Biology

LONGINO COOK, JR. Memphis, Tennessee
Sophomore, Business Education (Armed Forces)

ALPHONSO L. DOBBINS Corsicana, Texas
Senior, Agriculture

GEORGE L. HARPER, JR. Milledgeville, Georgia
Senior, Business Administration

JAMES L. HERNDON Memphis, Tennessee
Junior, Business Administration

ZARICOR JACKSON Nashville, Tennessee
Senior, English and Fine Arts

KENNARD C. JONES Nashville, Tennessee
Graduate Student, History and Social Science

JAMES W. MCMILLAN Nashville, Tennessee
Senior, History and Social Science

MAXWELL C. MACK Cincinnati, Ohio
Junior, Agriculture

JOHN CLAUDE OLIVER Cleveland, Ohio
Junior, Sociology

CHARLES PULLIAM Nashville, Tennessee
Sophomore, Engineering

WILLIAM H. SWEET Memphis, Tennessee
Sophomore, Agriculture

JAMES P. SCHELL Jacksonville, Florida
Senior, Pre-Med

DANIEL H. TAYLOR Memphis, Tennessee
Senior, Science

JAMES F. TAYLOR Ripley, Tennessee
Graduate Student, Agriculture

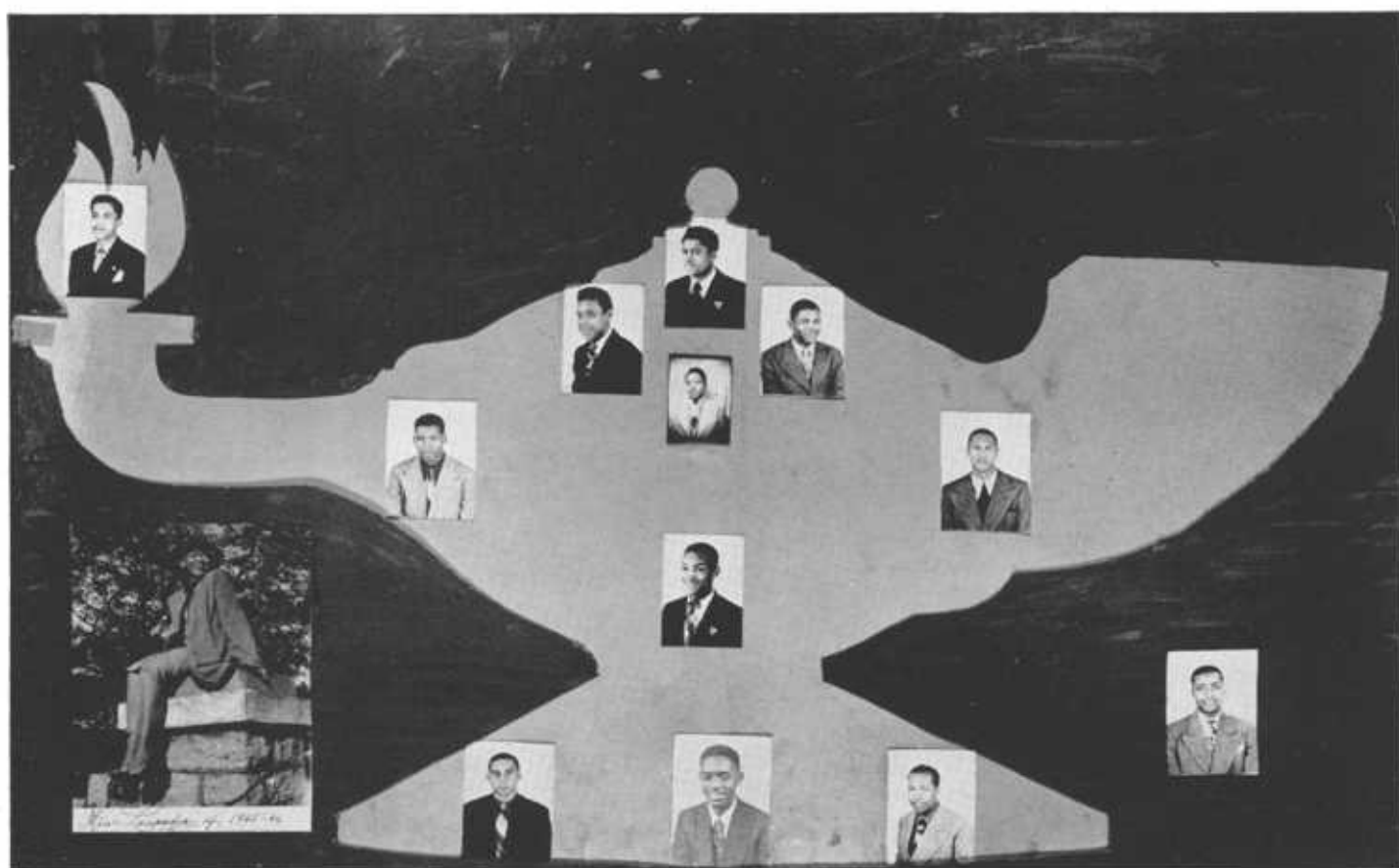
FRANK THOMAS Nashville, Tennessee
Senior, Pre-Med

KNOX J. TUCKER Nashville, Tennessee
Junior, Pre-Med

ISAAC WATSON Memphis, Tennessee
Junior, Pre-Dental

LOUIS A. WILSON Nashville, Tennessee
Graduate Student, Business Administration

THE LAMPADOS CLUB



We, the members of the Lampados Club of Rho Psi Chapter, Omega Psi Phi Fraternity, accept the challenge to manhood, scholarship, uplift, and perseverance with much enthusiasm. We are eagerly looking forward to the day when we may join the rank of great men of Omega.

The Lampados Club has been an intricate part of social and religious development on the campus with the sponsoring of Sunday School and Quiet Hour programs. Our most outstanding program of the year was the Booker T. Washington Memorial Service, initiating the drive for the Booker T. Washington Memorial to be erected in his honor in Virginia.

Too, we have sponsored dances and other social entertainments for student enjoyment.

Miss Doris Reed, Pyramid of Delta Sigma Theta Sorority, was elected Sweetheart of the Lampados Club and reigned supremely at one of our major affairs. Mrs. Mary E. Hill, assistant professor of chemistry, is our special honoree for 1945-1946.

OFFICERS

AUGUSTUS M. BARCROFT	Richmond, Virginia	EMMETT H. LEE, JR.	Marianna, Arkansas
<i>President</i>		<i>Chaplain</i>	
JAMES JONES	Birmingham, Alabama	WILLIAM SWEET	Memphis, Tennessee
<i>Vice-President</i>		<i>Sergeant at Arms</i>	
ERNEST L. MCKINNEY	Johnson City, Tennessee	O'FERRELL NELSON	Memphis, Tennessee
<i>Secretary</i>		<i>Reporter</i>	
PERCY CLEMONS	Richmond, Virginia	WILLIAM SCOTT	Birmingham, Alabama
<i>Treasurer</i>		<i>Assistant Reporter</i>	

MEMBERS

JAMES THOMPSON
OLIVER JOHNSON
VERNALL COLEMAN
ALFRED SHARPE
RUDOLPH MOTLEY

*Armed Services.

FREDRIC L. MCKINNEY
WILLIAM BRADFORD
GEORGE KING
WILBUR COLEMAN
EDWIN QUINN
LUCIUS BOND

WILLIE M. BASKETT
*EDWARD "NED" BYRD
*RUDOLPH DUNN
*SMITH CUNNINGHAM
*RAYFORD ADAMS
*WILLIAM SIMPSON

*JAMES LYON
SAMUEL SANFORD
ROBERT WHITMIRE
Dean of Pledges
COLERIDGE BREWER

BETA KAPPA CHI

HONORARY SCIENTIFIC SOCIETY



Front row, left to right: DR. MARION RICHARDS, Biology; MRS. MARTHA ALLEN, Biology and General Science; DR. H. B. CROUCH, Adviser, Biology; MRS. MARY E. HILL, Chairman Program Committee, Chemistry; MISS CATHERINE A. MARYLAND, Secretary-Treasurer. Back row: left to right: DR. CARL M. HILL, Chemistry; MR. CLARENCE E. O'NEAL; MR. THOMAS PINSON, President; MR. THOMAS HUGHES, Physical Education; DR. LEROY POSEY, Physics; MR. ARDENIA RAMBEAU; DR. MYRON B. TOWNS, Chemistry; MR. ALGER V. BOSWELL, Mathematics.

The names of the following members do not appear in the picture: MISS CLAUDIA BISHOP, DR. GEORGE W. GORE, MR. P. V. JEWELL, AND MR. D. A. WILLISTON.

Xi Chapter of Beta Kappa Chi Honorary Scientific Society was organized at Tennessee A. and I. State College March 8, 1944. Student memberships in the chapter are rather small at the present time because of the interruption in the education of many science majors brought on by the war, as well as some increases of scholarship standards for membership in the society. At the close of the fall quarter Willie Bishop, a chemistry major, was the only student to be elected. The faculty members elected were those who are already members of nationally famous organizations. Those elected were Dr. Leroy Posey, Sigma Xi; Dr. Marion Richards, Phi Kappa Phi and Sigma Delta Upsilon; and Dr. Myron B. Towns, Sigma Xi and Phi Beta Kappa.

The organization attempts to do the following: 1. To encourage scientific scholarship and research. 2. To assist in the dissemination of scientific information of a general cultural nature.

DELTA PHI DELTA



Beta Chapter of Delta Phi Delta National Journalistic Society was founded in 1937. The organization sponsors journalistic activities on the campus including the publication of the *Ayeni Collegian* and THE TENNESSEAN. During February the Society sponsors National Negro Newspaper Week.

ALPHA CHAPTER

"EXECUTIVE HOUR"

LAMBDA ETA SIGMA

National Literary Honor Society—1932-1946



MOTTO

"Reading maketh a full man, conference a ready man, and writing an exact man."—BACON

AIMS

The aims of this organization shall be to confer distinction for high achievement in literature, to foster the spirit of liberal culture, to stimulate and encourage mental development, achievement, and character growth, to impart instruction and conduct organized study in all of the branches of the English language and literature, to provide and administer a fund for the granting of scholarships and fellowships, to stand for freedom of mind and spirit and for democracy of learning, to provide spiritual and intellectual leadership, to preserve valuable traditions and customs, to strive for attainment of democratic ideals, to associate outstanding leaders in mutual understanding for the advancement of the society in the act of democratic living, to stimulate worthy attitudes for the improvement of the general welfare of the institution, to impose upon members higher citizenship responsibilities and to emphasize deeper study of all subjects pertaining to the welfare of mankind.

LAMBDA ETA SIGMA NATIONAL HYMN

I

Lambda Eta Sigma, with your noble heart,
Loyalty we pledge you; may we never part;
May your aims and ideals be our guiding star;
Keep us true and loyal, tho' we travel far.

II

We will give you service, strive in every way
To foster all your ideals; may you grow each day
Tall and strong and mighty like the giant oak;
May you e'er be sheltered from the tempest stroke.

Chorus

Lambda Eta Sigma, we love you,
Love you and your colors gold and blue,
Praise you for your service and united stand
For Lambda Eta Sigma true and grand.

Words and music by

MISS VIRGIE G. HALE
(Department of English)

OFFICERS

GLADYS L. WILLIAMS.....	President	CATHERINE MURRAY	Treasurer
MARY F. TALLEY.....	Vice-President	ERNEST MCKINNEY	Reporter
CALLIE LENTZ.....	Second Vice-President	HELEN DUMAS	Reporter
SABRA SOUTHALL.....	Secretary	NELL ARMSTRONG	Dean of Pledges
JOHNADA MOSS.....	Corresponding Secretary	LORENA MCCALL.....	Dean of Pledges
ZELMA L. REDMOND.....	Adviser		



MISS ZELMA LENORA REDMOND
*Founder and Adviser of Lambda Eta Sigma
National Literary Honor Society*

FOURTEENTH ANNIVERSARY DEDICATION

"SINGING HOUR"



"MUSIC HOUR"



"PLEDGING HOUR"



"READING HOUR"



THE PSYCHOLOGY CLUB



Through the combined action of man's various sense organs, man is able to adjust himself to the objects which surround him.

This group in the front of the picture is performing an experiment on "the special senses," demonstrating to the Psychology Club members that complex objects and situations become known to us through stimulation to the following senses: Taste, sound, smell, touch, sight.

Reading from right to left: Miss Odessa Perry, assisted by Miss Richie Turpin in testing the sense of taste; Miss Macel Smith, Mr. Emmitt Lee, testing sound; Mr. Dan Taylor testing smell; Miss Gladys Williams testing sight and touch; and Miss Geneva Clayborne taking notes.

The officers are: President, Callie M. Lentz; vice-president, Bloomie Davis-Gore; secretary, Alice Armstrong; assistant secretary, Lillian Redmond; treasurer, Bettye Alexander; reporter, Ernest McKinney; adviser, Miss Zelma L. Redmond.

NEW FARMERS OF AMERICA



The New Farmers of America is the national organization of Negro farm boys studying vocational agriculture in the public schools and colleges throughout the United States of America.

This organization affords its members an excellent opportunity to develop a type of leadership which is very essential for the modern, successful farmer. This leadership ability is developed through training received from the local advisers. This helps one to work toward the goal of establishing a farm business.

This organization, like all other organizations, has its purposes in which we strive to make it more beneficial to those majoring in vocational agriculture with the purpose being:

1. To develop competent, aggressive agricultural rural leadership.
2. To encourage intelligent choice of farm occupations.
3. To encourage members in the development of individual farming programs.
4. To encourage members to improve the home, the farm, and surroundings.
5. To participate in worthy undertakings for the improvement of agriculture.
6. To practice and encourage thrift.
7. To develop character, train for useful citizenship, and foster patriotism.
8. To participate in cooperative effort.
9. To provide and encourage the development of organized rural recreational activities.
10. To strengthen the confidence of farm boys and young men in themselves and their work.
11. To encourage improvement in scholarship.
12. To create and nurture a love for country life.

SPENCER DAVIS
ALPHONSO M. DOBBINS

ELEMENTARY EDUCATION CLUB

FEATURING MISS TENNESSEE STATE



Officers of the Elementary Education Club, Tennessee A. and I. State College

Beginning at the bottom and going clockwise are: Mrs. Marie D. Harris, Shelbyville; Dorothy Wright, Rockwood; Sarah Shaw, Clarksville; Mildred Bowen, Clarksville; Edith Braden, "Miss Tennessee State," Lynnville; Etta Mae Griffin, Chattanooga; Myrtle Russell, Nashville; Vesta Barnett, Toledo, Ohio; Nell Armstrong, Chattanooga; Leah Stockard, Nashville. Mrs. F. A. Sanders, Adviser, not in picture.

Division of History and Social Studies Majors Fall, 1945



The Division of History and Social Studies has the distinction of having 181 majors. They are prepared for teachers on the high school level in the fields of history, civics, political science, sociology, economics, and geography. They also receive foundation courses for law, supervisors, social workers, government employees, and other social service areas.

FUTURE BUSINESS LEADERS OF AMERICA



F. B. L. A. Annual Christmas Party

F. B. L. A. FACULTY AND OFFICERS

Reading left to right, standing: MR. WALTER MCMILLAN, Treasurer; MISS CATHYNE MOODY, Secretary; MISS CALLIE LENTZ, President; MISS HENRIETTA RUCKS, Assistant Secretary; MR. GEORGE HARPER, Vice-President. Reading left to right, seated: MISS MATTIE GORDON, MRS. MABEL SMYTHE, MRS. MILDRED LASTER, MRS. MARY JACKSON. Inset: MR. L. R. HOLLAND, Director.

HISTORY STUDY CLUB



OFFICERS

ALLURIA FREEMAN	President	VIVIAN REID	Treasurer
HELEN LAWSON	Vice-President	BENJAMIN SAULTER	Business Manager
ROSALEE HARTZOG	Secretary	BENNIE BATTS	Reporter
LAURETTA CANTRELL	Assistant Secretary	PROF. MERL R. EPPSE	Adviser

Sitting in picture at left is DOROTHY HERNDON, Senior, Chicago
A. K. A.—Queen of History Study Club

Standing in picture at right are, left to right: Lauretta Cantrell, Hammond, Indiana; Benjamin Saulter, Cincinnati, Ohio; Helen Lawson, Pensacola, Florida; Bennie Batts, Grand Rapids, Michigan. Seated, left to right: Alluria Freeman, Memphis, Tennessee; Rosalee Hartzog, Jacksonville, Florida.

In the picture at bottom are Miss Herndon's attendants:
Latishia Harvey, Oxford, Miss. Junior Attendant
Martha Piper, Memphis, Tenn. Senior Attendant
Mary Ethel Flagg, Memphis, Tenn. Sophomore Attendant

Andrades Turner, Nashville, Tenn. Freshman Attendant
Dorothy Herndon, Chicago, Ill. Queen
Alluria Freeman, Memphis, Tenn. President

HOME ECONOMICS CLUB



The Home Economics Club is composed of students of the Division of Home Economics who desire to enroll as members. There are two sections to the club, the upper and lower divisions, the juniors and seniors comprising the upper division, and the freshmen and sophomores, the lower.

The club colors are yellow and green, and the insignia, which is inscribed on the club pin, is a flaming torch signifying the desire and intention of the club members to make use of every opportunity to enlighten and to share their knowledge of better home and community living.

The club council, which is composed of presidents of the four class groups, the club president and the advisers, considers major problems that confront the club, interprets them to the entire body, and guides the body in making plans for the year.

During the year the club engages in the activities of the college and sponsors as major activities, Home Economics Week, Quiet Hour, the Annual Dawn Dance, and the Spring Picnic, the latter two being given jointly with the N. F. A. collegiate chapter of the college.

SPANISH CLUB

LOS BUENOS VECINOS



Seated, left to right: Singer Buchanan, Princess Prather, Sara McClure, Andrades Turner, Marion Wright, Gloria Smith, Rebecca Williamson, Lora Parker. *Standing, left to right:* Mrs. Alma T. Watkins, Pinckney Falls, Ona Ransom, Geraldine Parker, Lois Wilson, Johnnie Mae Bugg, Polly Petty, Ora Lee Marsh, Blanchie Graham, Dorothy Brooks, Violean Johnson, Dorothy Gaines, Mildred Crawford, Lucy Dove, Willie Mae Owens, Rosa Parker, Beatrice Smith, Margaret London, Dorothy Simmons, Mary Lewis. *Rear, left to right:* Ardenia Rambeau, Frank Blevins, Eugene Webb. *Not in picture:* Marion V. Connor, Pauline Warr, Patricia Bynum, Vernoll Coleman, Bettye Coley, Ethel Jackson, May Dell Williams, Mary Lee Green, Amelia Dorse, Arlette Madison, Geraldine Gray, Vernice Howard, Lillie Belle Kellum, Gloria Rambo, Dorsey Bernice Fields, Algie Oldham, James Thompson, Duell Overton, Mary Lindsley, Ben Winters, Ada Dotson, Pauline Pace, Lauretta Cantrell, Robert Officer, Carrie B. Tadley, Lois Reid, Mildred Bowen, Vincent Bunch, Allura Freeman, Willie Mae Washington, Annie Prince, Selena Davis, Willie McMurray, Clara Pinson.

Los Buenos Vecinos was organized in 1943 by Mrs. Alma T. Watkins. The projects for 1945-1946 included a "Get Acquainted" Spanish luncheon in October; the fourth annual Christmas Party and Program in December; a joint carnival with the French Club in February; a Pan American Day; Vespers program in April, and a joint picnic in Hadley Park in May.

Some interesting activities of the club were the classroom talks made by our returned veterans, Captain Taylor, Technical Sergeant Frank Jamison, Private Hugh Pincham, T/4 Jesse Roberson, T/4 J. D. Carlton, Private Vernoll Coleman, Private Edward Canada, T/4 Pinckney Falls, and Warrant Officer, Junior Grade, Alvin McNeil. Other activities included visits by the foreign students of Fisk and Meharry and correspondence with students of the American Institute of Rio de Janeiro, Brazil.

The officers of the club for the first quarter: SENOR THOMAS PILLOW, *President*; SENORITA MARION WRIGHT, *Vice-President*. The present officers are SENORITA MARION WRIGHT, *President*; SENORITA ANDRADES TURNER, *Secretary*; SENORITA DORSEY FIELD, *Treasurer*, and SENORITA SARA B. MCCLURE, *Reporter*; SENORA ALMA T. WATKINS, *Sponsor*.

LE CERCLE FRANCAIS

LES AMIS DE LA FRANCE



OFFICERS

DORIS REID	<i>President</i>	GWENDOLYN KISER	<i>Treasurer</i>
DANIEL LUCKY	<i>Vice-President</i>	DR. VIRGINIA S. NYABONGO	<i>Sponsor</i>
NATHALIE HAMLAR	<i>Secretary</i>	MRS. HELENA R. BLACK	<i>Sponsor</i>

Le Cercle Francais, Les Amis de la France, was organized in December, 1943, by Mrs. Alma T. Watkins for the purpose of learning more about the French people, their language, and culture. The French Club during the year 1945-1946 joined the Spanish Club in an annual Christmas party, a carnival, a language club picnic in Hadley Park. Other activities included the French Table in the college cafeteria, the showing of French films, "La Kermesse Heroique" and "Paris," a float in the Thanksgiving Home-Coming parade representing the Statue of Liberty.

Contributions were made by the French Club to the Community Chest, the March of Dimes, the Christmas Seal Campaign, and the Y. W. C. A. Building Campaign.

GAMMA IOTA ALPHA

ALPHA CHAPTER OF TENNESSEE



OFFICERS

ALVIN J. MCNEIL	<i>President</i>	CLEM HOLLOWAY	<i>Treasurer</i>
ROY RICHARDSON	<i>Vice-President</i>	JAMES A. COOKE	<i>Chaplain</i>
CHARLES MARTIN	<i>Secretary</i>	GEORGE DAWSON	<i>Sergeant at Arms</i>
MRS. RACHEL PATILLO	<i>Adviser</i>		

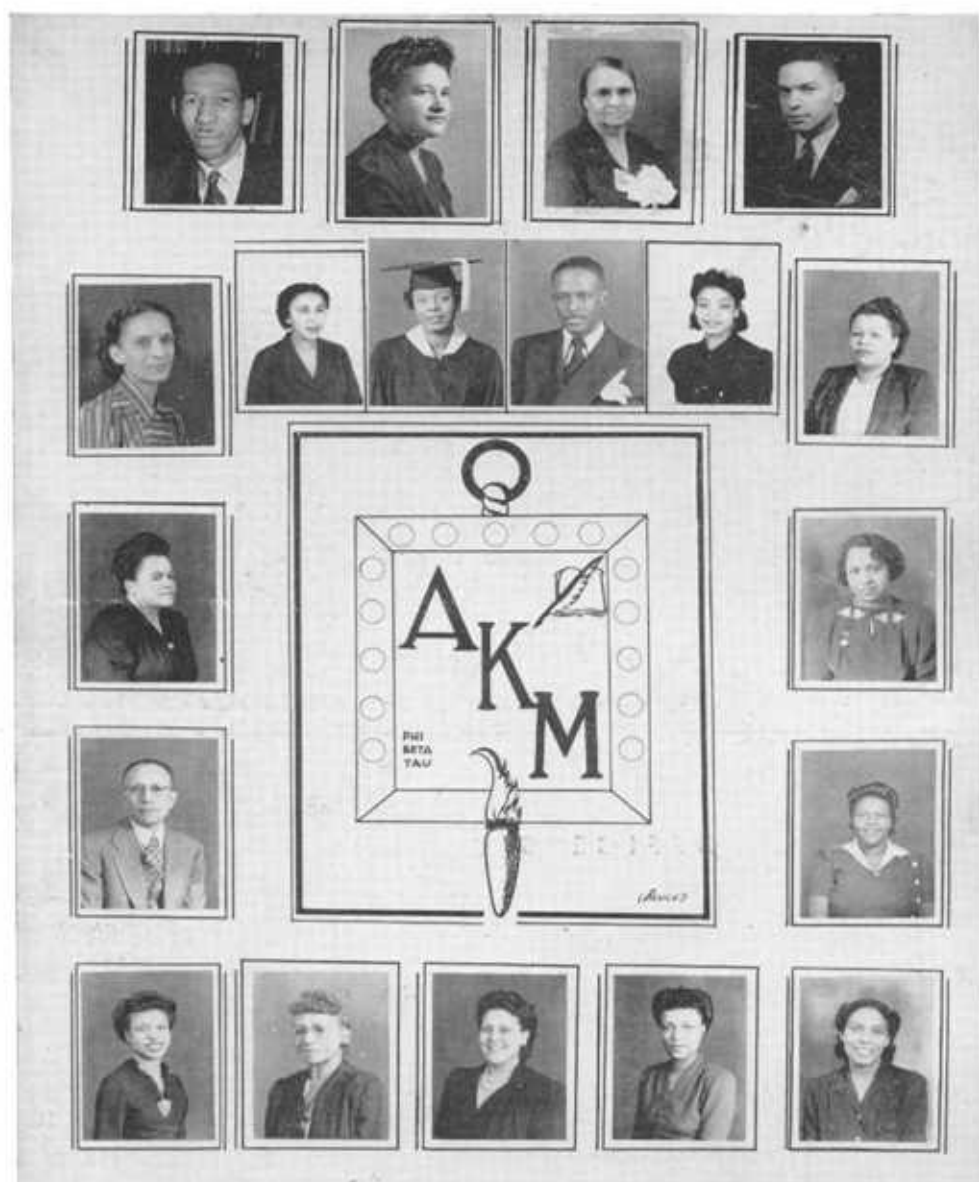
Gamma Iota Alpha, a G.I. intercollegiate association, was founded at the Polytechnic Institute of Brooklyn in October, 1943. Alpha Chapter of Tennessee was founded at Tennessee A. and I. State College November 11, 1945, by a group of its first veterans to enroll after the war.

The objectives of the GIA are:

1. To promote the general welfare of all veterans of all the wars of the United States of America.
2. To promote a more effective role in American life on the part of the college veteran.
3. To enable the college veterans of the wars of the United States of America to associate socially and culturally and to promote good will among the members of this association.

Membership in GIA is open to all veterans whose termination of active service was under honorable conditions regardless of sex, race, creed, or color. Members of GIA have pledged themselves to serve God, country, and humanity, and to be pure, honest, and faithful.

PHI BETA TAU CHAPTER OF ALPHA KAPPA MU HONOR SOCIETY



OFFICERS

- MISS WILLIE DEAN DEBOW
President
MISS SARA RUTH SOUTHALL
Vice-President
MISS DOROTHEA SPRATLEN
Secretary-Treasurer
MISS LOIS H. DANIEL
Assistant Secretary-Treasurer
MISS RUBY M. PRIGMORE
Corresponding Secretary
MRS. ALMA DUNN JONES
Keeper of Records and Seal

ADVISERS

- DR. GEORGE W. GORE, JR.
DR. MYRON B. TOWNS

MEMBERS

- MISS CHRISTINE ALEXANDER
MISS LAURA M. AVERITTE
MR. ALGER BOSWELL
MRS. MARTHA M. BROWN
MRS. MARY F. CARTER
DR. WALTER S. DAVIS
MRS. JANIE E. ELLIOTT
MRS. RUTH D. EPPSE
MRS. PEARL GORE
MRS. MARIE D. HARRIS
MISS VIRGIE G. HALE
MRS. DOROTHY JONES
MRS. MILDRED C. LASTER
MRS. LUCILLE B. LAWS
MR. EDWARD L. MULLINS
DR. VIRGINIA S. NYABONGA
MRS. ARIZONA OFFICER
MRS. RACHEL PATILLO
MISS SARA E. PAYNE
MISS ALICE PROCTOR
MISS GLADYS L. WILLIAMS
MR. CLINTON DERRICKS
MRS. MILDRED K. GAINES

HISTORY OF PHI BETA TAU CHAPTER OF ALPHA KAPPA MU HONOR SOCIETY

It has been truthfully said, "Scholarship societies keep colleges intellectually centered."

Phi Beta Tau, which was organized at Tennessee State College on March 26, 1931, has since focused its utmost efforts toward the fulfillment of this end through the promotion of high scholarship, the encouragement of sincere and zealous scholastic endeavor, the cultivation of a high order of personal living, and the development of appreciative attitude toward others who possess well employed intellectual capacities. It further purposes to present the scholar as a man thinking as well as for the service of mankind.

In 1939, the organization became the Phi Beta Tau Chapter of Alpha Kappa Mu, an Honor Society now consisting of twenty-nine chapters located in prominent Negro colleges in thirteen states.

Juniors and seniors maintaining an accumulative average of 3.3 are eligible for membership.

STUDENT CHRISTIAN ASSOCIATION

SPONSORED QUIET HOUR

September, 1945 - June, 1946

8,323 Students Attending



HARRIETT JOHNSON	Co-Chairman
CLEM HOLLOWAY	Co-Chairman
JEANINE ALLISON	Co-Secretary
WILLIAM BURRUSS	Co-Secretary
WILLIAM TOWNSEND	Treasurer
ETRULIA CUNNINGHAM	Co-Pianist
MCCLENDON HAYES	Co-Pianist
MRS. L. B. WATSON	Adviser

COLLEGE CAFETERIA



View of the beautiful counter service at the College Cafeteria, which warms the palate of many prominent guests as well as students of the college, is shown above. Dietitian Mattie E. Bious stands proudly beside the counter ready to supervise the serving of the food.

The College Cafeteria holds a unique place in the program of school affairs. It is one of the many places on the campus that stands for efficiency and courteous service.

The reputation of successful management may be attributed to many causes. For approximately twenty years, Mrs. Janie E. Elliott has devoted her unselfish service to the cause of making "mealtime" a "happy time."

On January 1, 1946, Mrs. Janie E. Elliott was retired as manager of the cafeteria and appointed as consultant; Mr. Robert M. Gaines was appointed as manager; Miss Mattie E. Bious as dietitian. Mr. Gaines served as assistant to Mrs. Elliott for four and one-half years, and as chief cook for the railroad company for five years, also as instructor of Cooks and Bakers School in the United States Army for four years. Miss Bious served as dietitian at Alcorn A. and M. College for two and one-half years.

Foods of the best quality are prepared by student and city help under the direct supervision of Miss Mattie E. Bious, dietitian. The food is both attractive and wholesome as special care is given to the art of preparation so as to retain the maximum nutritive value, digestibility, and palatability, to the end that the student will enjoy meals and still be adequately nourished.

The cafeteria has not only served the students and faculty, but it has extended its service to personalities of national and international character. The legislature meets biennially in Nashville, at which time it is the privilege of the college to entertain them at a luncheon in their honor. Various organizations, including the New Farmers of America, the Y. W. C. A., the Tennessee Negro Education Association, National Conference of State Supervisors and Teacher Trainers in Agriculture and Home Economics, Fraternities and Sororities, and others have held elaborate banquets in the college cafeteria. Visitors from all sections of the country have shared in the hospitality the cafeteria offers.



Top—The cafeteria staff, left to right: Miss LILLIE B. JOHNSON, counter supervisor; BENJAMIN SAULTER, host; Miss CATHERINE MOODY, checker; Miss ALTO JEANNE KING, checker; MRS. J. E. ELLIOTT, consultant; R. M. GAINES, manager; Miss MATTIE E. BIOUS, dietitian; ROBERT OFFICER, cleaning supervisor; Miss LOUIS BIOUS, pianist; Miss NETTIE DUMAS, checker; Miss ERNESTINE LINDSEY, clerk; Miss LOUISE HELMS, checker. Bottom—Students at dinner.



Top—View of food in the process of preparation. *Bottom*—Miss Mattie E. Bious, dietitian, inspecting prepared food before it is transferred from kitchen to service counter.

CAMPUS KIDS



CAMPUS SUPERLATIVES



GLORIA WILKERSON
Most Beautiful Young Woman



BRANDON BARTON
Most Handsome Man



CAROLINE BLANTON
Most Popular Young Woman



MARION SMITHSON
Most Popular Man

TELEPHONE 6-1345

NEW MASONIC TEMPLE

J. R. ANDERSON
PHOTOGRAPHER

419 FOURTH AVENUE, NORTH

NASHVILLE, TENNESSEE

ASK YOUR GROCER FOR

ANDERSON'S

QUALITY SEA FOODS and
FROZEN FRUITS AND VEGETABLES

TOPS IN QUALITY SINCE 1912

CLARK HARDWARE COMPANY
JOBBERS AND DEALERS

HARDWARE — SPORTING GOODS — KINDRED LINES

Telephone 6-5168

315 Broadway

NASHVILLE 3, TENNESSEE

UNIVERSAL LIFE INSURANCE COMPANY

"We Cover the Earth"

OVER THREE MILLION DOLLARS IN ASSETS
OVER THREE HUNDRED THOUSAND POLICYHOLDERS

Home Office: Memphis Tennessee

Local Office: 1501 Jefferson Street

H. A. GILLIAM, District Manager

"CLEAN
DEALS
IN DIRT"



LIST YOUR
PROPERTY
WITH US.

J. W. FRIERSON, President

Frierson Realty Co.

RENTS . . . SALES . . . LOANS

WE BUILD OR SELL TO SUIT THE PURCHASER

417 FOURTH AVENUE, NORTH
PHONE 6-3255

Nothing too small or too large for us to handle. Real Estate transactions
upon our recommendation will stand.

INSURANCE OF ALL KINDS